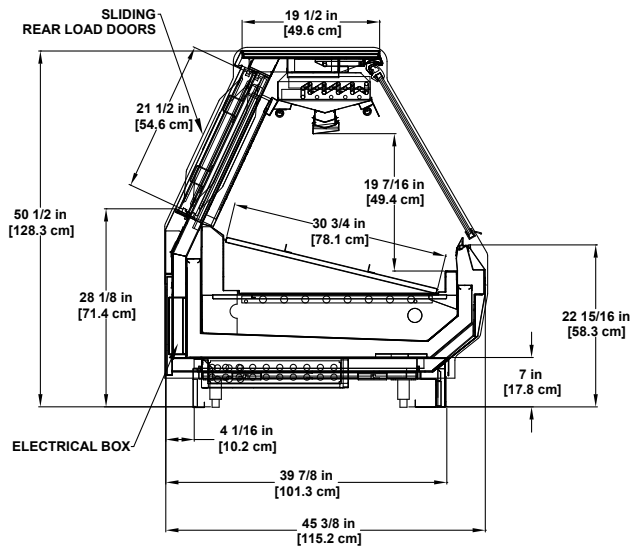


Service Single-Deck

Refrigerated gravity coil seafood merchandiser with ice application serpentine assist and flat lift-glass.





Please consult Hillphoenix Engineering Reference Manual for dimensions, plan views and technical specifications. Specifications subject to change without notice. Designed for optimal performance in store environments where temperature and humidity do not exceed 75° F and 55% R.H. Certified to UL 471 and ANSI/NSF Standard 7.

Base Model Features

- C-frame with bullet leg construction.
- Standard 50-1/2”H with 7”H base frame height.
- Angled front profile.
- Exterior: Painted metal, including lower front panel above base.
- Stainless steel base trim, front and sides.
- Stainless steel exterior trim.
- Painted metal outside back and rear base trim to match exterior.
- Stainless steel case top.
- Clear rear load doors with black frames.
- Thermopane, insulated (5/8” thick) regular-glare flat lift front glass.
- Gray glass gasket, wipe and glass handle.
- Stainless steel interior.
- Interior trim to match interior.
- Black plastic coil covers with fixed cleated stainless steel ice rack.
- Clearvoyant® LED dual canopy lighting.
- Electrical slide out tray.
- Gravity (small) with serpentine assist seafood model (ice required).
- Solar digital thermometer.
- Remote DX refrigeration package.

Available Options

- Available lengths: 4’, 6’, 8’, 10’ and 12’.
- Case heights available: 52-1/2” and 54-1/2”.
- Alternate flexible base heights include: 9” and 11”H.
- Pedestal base or false pedestal base.
- Black extruded polymer base trim .
- Black painted metal base trim.
- Master with nose bumper.
- Cart bumper (for flat front profile).
- Exterior stainless steel finish.
- Solid surface or stone case top.
- Integrated case top scale stand (standard option - available on all lengths - customer left/center right).
- Adjustable scale stand (interior strut mount - 8’ and 12’ only) (Type: Poly or SS).
- Dedicated ISO per scale stand with optional pull wire(s).
- White plastic coil covers.
- Adjustable wire racks.
- Heavy-duty stainless steel deck - No coil cover.
- Ice pans.
- Reflective rear load doors.
- Solid or dot matrix glass black or gray glass masking.
- Black glass gasket, wipe and glass handle.
- Rear (fixed or flip-up) work boards (Type: Poly, SS, solid surface).
- Paper Cutter: Serrated or non-serrated.
- Rear electrical box mounted behind the lower rear panel: Customer left.
- ISO outlet, CON outlet or CAT5.
- Clearvoyant LED top lighting (1 High or up to 2 standard output).
- Alternative thermometer.
- Refrigeration options: Thermostat, solenoid, sensor, defrost timer, LLBV, EPR valve, controllers, coated coil (consult factory).
- Solid interior stainless steel, solid interior mirror polish stainless steel, thermal glass divider or glass ends.
- Remote glycol or CO2 refrigeration packages.



Dover Food Retail
Conyers, GA USA
844.591.5937
hillphoenix.com

Hillphoenix

©2020 Hillphoenix, Inc.