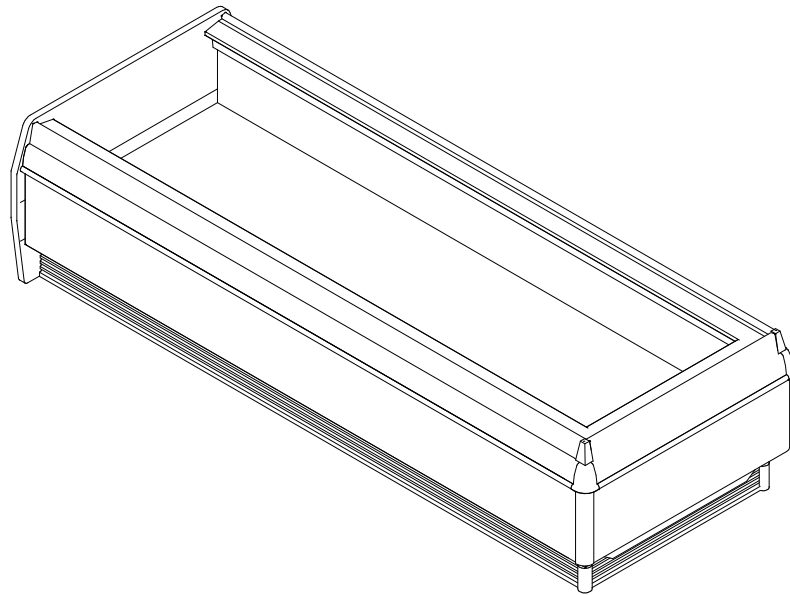


GENERAL NOTES

- “---” indicates the feature is not an option for this case model and/or the data is not yet available.



SHIPPING WEIGHT	
Case Name	Weight
OIZ	---



COMPONENT

ALL MEASUREMENTS ARE TAKEN PER ASHRAE-72-2005 SPECIFICATIONS. HILLPHOENIX REFRIGERATED DISPLAY CASES FOR SALE IN THE UNITED STATES MEET OR EXCEED DEPARTMENT OF ENERGY 2017 REQUIREMENTS.

OIZ

Rev. Date	Rev. #	Rev. Title
4-9-20	3	DATA UPDATE
7-26-18	2	NEW STANDARDS

ELECTRICAL DATA									
Case Length	Fans Per Case	High Efficiency Fans		Anti Condensate Heaters		Defrost Heaters			
		120 Volts		120 Volts		208 Volts		240 Volts	
		Amps	Watts	Amps	Watts	Amps	Watts	Amps	Watts
8'	2	0.30	22.0	0.72	86.7	11.60	2400	13.30	3196
12'	3	0.45	33.0	1.04	124.1	17.30	3600	20.00	7495

GUIDELINES AND CONTROL SETTINGS						
Application	BTUH/FT		Superheat Set Point @ Bulb (F)	Evaporator (F)	Discharge Air (F)	Discharge Air Velocity (FPM)
	Conventional	Parallel				
Frozen Foods	372	364	3 - 5	- 12	- 8	190
Medium Temp	223	217	6 - 8	27	32	190

DEFROST CONTROLS									
Application	Defrosts Per Day	Run Off Time (Min)		Electric Defrost		Timed-Off Defrost		Hot Gas Defrost	
		Electric	Hot Gas	Fail-Safe (Min)	Termination Temp (F)	Fail-Safe (Min)	Termination Temp (F)	Fail Safe (Min)	Termination Temp (F)
Frozen Foods	1	5	13 - 15	35	52	---	---	20	60
Medium Temp	1	5	13 - 15	40	42	45	42	20	60

NOTES

- “---” indicates the feature is not an option for this case model and/or the data is not yet available.
- BTUH load increases by 132 BTUH/ft when aftermarket merchandising accessories are utilized.
- Listed discharge air velocity represents the average velocity at the peak of defrost.
- Temperature and defrost settings listed above are recommended start-up settings. Final operational settings may need to be adjusted for the store conditions in which the case operates.
- The recommended evaporator temperatures may need to be adjusted based on system setup, store conditions, etc.
- Medium Temp application is run in dual temp mode only.
- The minimum recommended evaporator temperature is 4°F below the listed evaporator temperature.



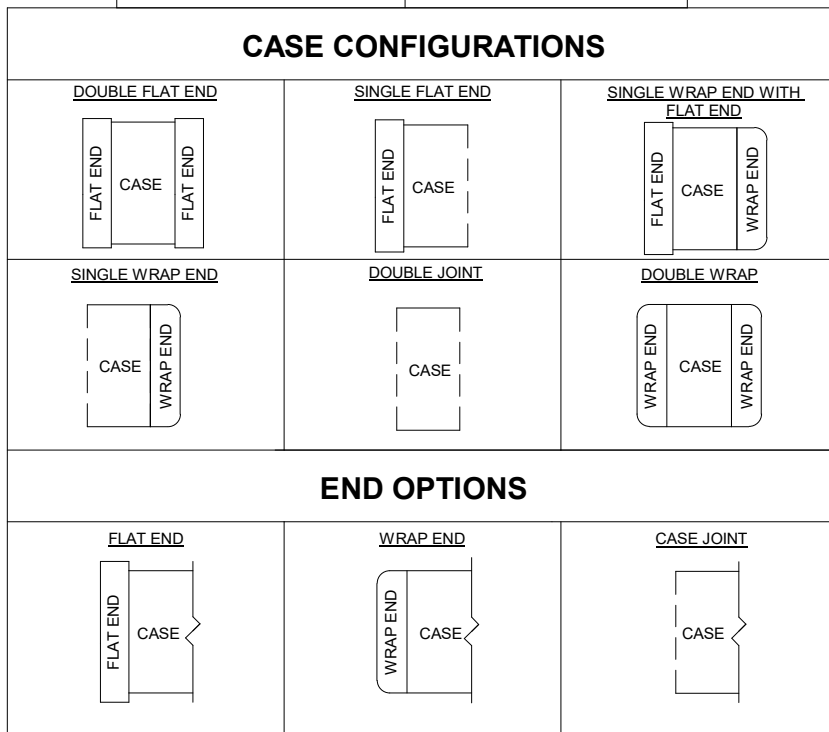
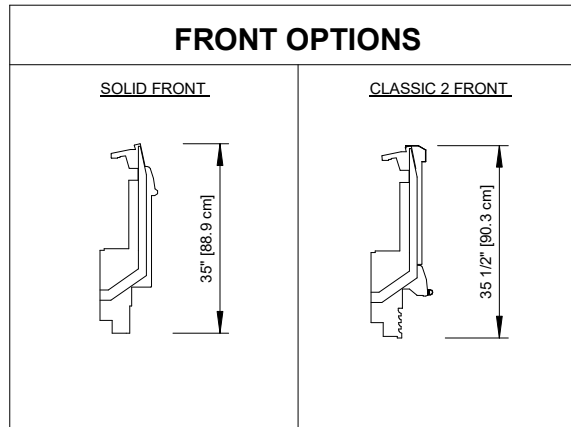
ALL MEASUREMENTS ARE TAKEN PER ASHRAE-72-2005 SPECIFICATIONS. HILLPHOENIX REFRIGERATED DISPLAY CASES FOR SALE IN THE UNITED STATES MEET OR EXCEED DEPARTMENT OF ENERGY 2017 REQUIREMENTS.

OIZ

Rev. Date	Rev. #	Rev. Title
4-9-20	3	DATA UPDATE
7-26-18	2	NEW STANDARDS



A DOVER COMPANY

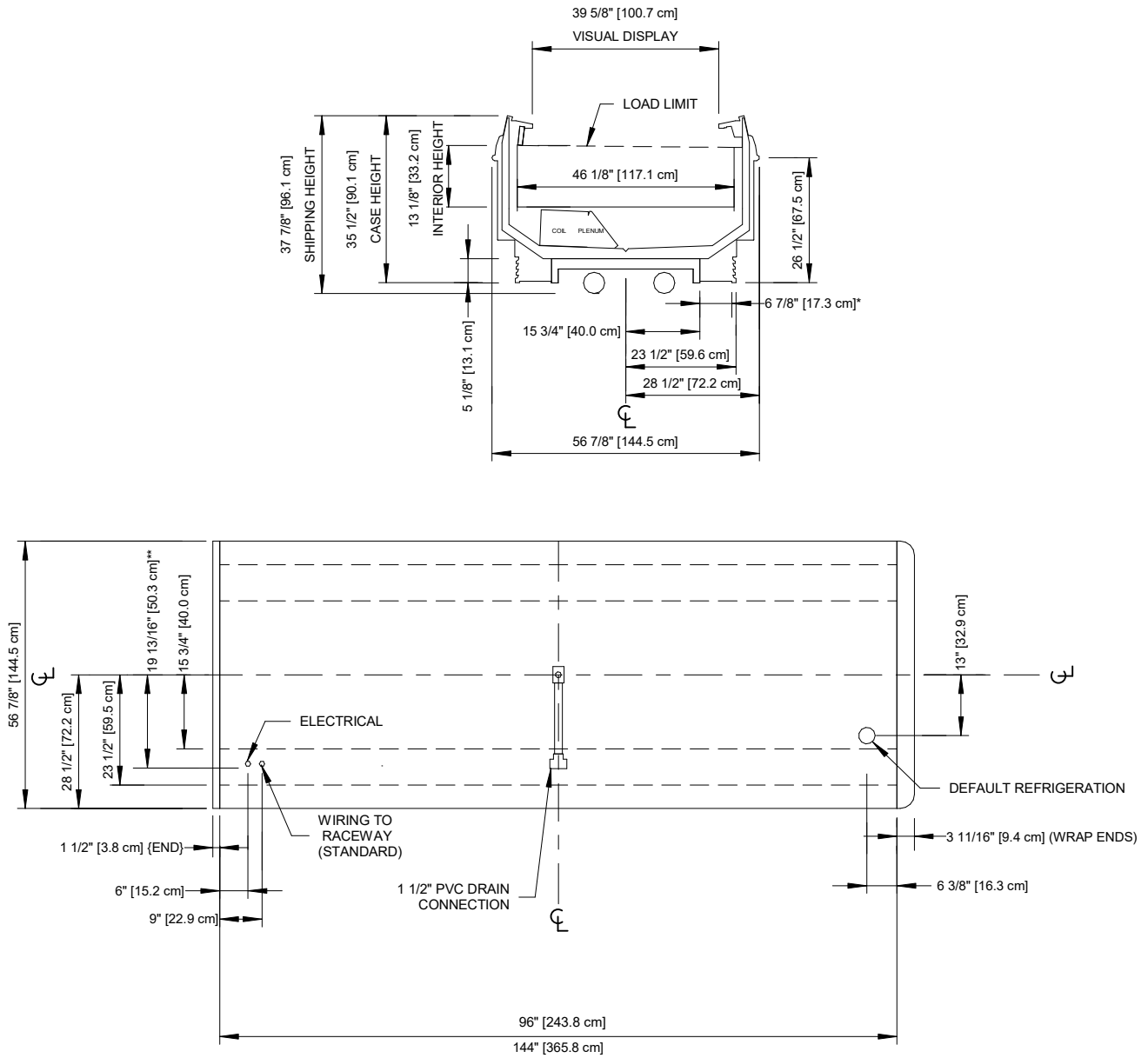


ALL MEASUREMENTS ARE TAKEN PER ASHRAE-72-2005 SPECIFICATIONS. HILLPHOENIX REFRIGERATED DISPLAY CASES FOR SALE IN THE UNITED STATES MEET OR EXCEED DEPARTMENT OF ENERGY 2017 REQUIREMENTS.

OIZ

Rev. Date	Rev. #	Rev. Title
4-9-20	3	DATA UPDATE
7-26-18	2	NEW STANDARDS





NOTES

- * :STUB-UP AREA
- ** :RECOMMENDED STUB-UP CENTERLINE FOR ELECTRICAL AND HUB DRAINS
- Front and rear sill heights vary with baseframe height.



ALL MEASUREMENTS ARE TAKEN PER ASHRAE-72-2005 SPECIFICATIONS. HILLPHOENIX REFRIGERATED DISPLAY CASES FOR SALE IN THE UNITED STATES MEET OR EXCEED DEPARTMENT OF ENERGY 2017 REQUIREMENTS.

OIZ

Rev. Date	Rev. #	Rev. Title
4-9-20	3	DATA UPDATE
7-26-18	2	NEW STANDARDS

Hillphoenix
A DOVER COMPANY