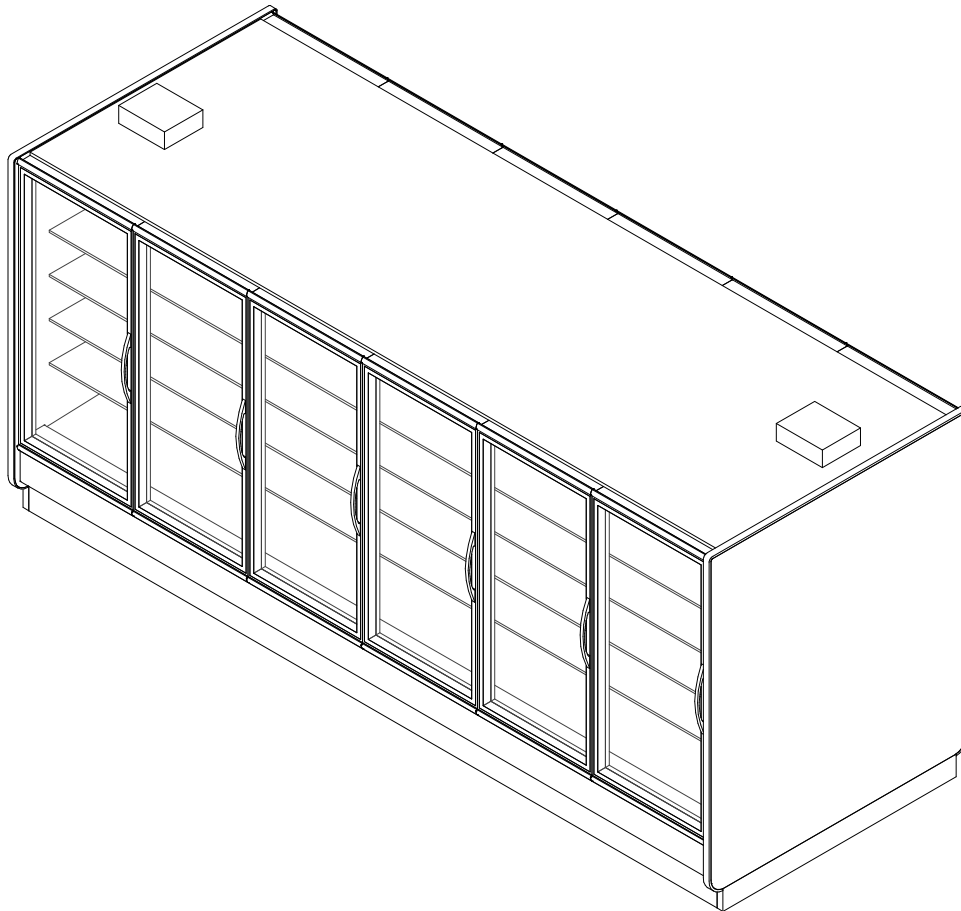


GENERAL NOTES:

- For back-to-back configurations, customers are required to install separate current-limiting devices for each side of the case per the amperage values listed. (Current-limiting devices are available for purchase through Hillphoenix).
- Lighting control - occupancy sensors are required
- Option 1: OEM Provided: OEM anti-condensate and lighting controls (on/off) are standard unless otherwise specified
- Option 2: End User Provided: Light controls should be based on occupancy sensors. Store level A/S control should be set to 30% minimum off time at 75°F/55%RH.



SHIPPING WEIGHT	
Case	Weight
ONRIZ	---



ALL MEASUREMENTS ARE TAKEN PER ASHRAE-72 SPECIFICATIONS. HILLPHOENIX REFRIGERATED DISPLAY CASES FOR SALE IN THE UNITED STATES MEET OR EXCEED DEPARTMENT OF ENERGY 2017 REQUIREMENTS.

ONRIZ

Rev. Date	Rev. #	Rev. Title
4-7-21	6	DATA UPDATE
7-13-20	5	DATA UPDATE

ELECTRICAL DATA Single-Side

Case Length	Fans Per Case	High Efficiency Fans		Tank Heaters		Defrost Heaters (1-Phase)				Defrost Heaters (3-Phase)			
		120 Volts		120 Volts		208 Volts		240 Volts		208 Volts		240 Volts	
		Amps	Watts	Amps	Watts	Amps	Watts	Amps	Watts	Amps	Watts	Amps	Watts
2 Door	2	0.60	50	1.30	152	7.50	1552	8.60	2068	6.50	1552	7.50	2068
3 Door	3	1.00	75	1.50	171	10.90	2274	12.60	3018	9.50	2274	10.90	3018
4 Door	4	1.30	100	1.90	226	14.30	2984	16.60	3992	12.40	2984	14.40	3992
5 Door	5	1.60	125	2.30	275	17.50	3640	20.20	4840	15.10	3640	17.40	4840
6 Door	6	1.90	150	2.70	320	20.30	4224	23.40	5624	17.60	4224	20.30	5624

ELECTRICAL DATA Back-To-Back

Case Length	Fans Per Case	High Efficiency Fans		Anti Condensate Heaters		Defrost Heaters (1-Phase)				Defrost Heaters (3-Phase)			
		120 Volts		120 Volts		208 Volts		240 Volts		208 Volts		240 Volts	
		Amps	Watts	Amps	Watts	Amps	Watts	Amps	Watts	Amps	Watts	Amps	Watts
4 Door	4	1.20	100	2.60	304	15.00	3104	17.20	4136	13.00	3104	15.00	4136
6 Door	6	2.00	150	3.00	342	21.80	4548	25.20	6036	19.00	4548	21.80	6036
8 Door	8	2.60	200	3.80	452	28.60	5968	33.20	7984	24.80	5968	28.80	7984
10 Door	10	3.20	250	4.60	550	35.00	7280	40.40	9680	30.20	7280	34.80	9680
12 Door	12	3.80	300	5.40	640	40.60	8448	46.80	11248	35.20	8448	40.60	11248

LIGHTING DATA Single-Side

Case Length	Door Size	OP45		OP7 Single Swing	
		120 Volts		120 Volts	
		Amps	Watts	Amps	Watts
2 Door	30"	0.36	43.1	0.28	33.0
3 Door	30"	0.54	65.2	0.41	49.2
4 Door	30"	0.73	87.3	0.55	65.4
5 Door	30"	0.91	109.4	0.68	81.6
6 Door	30"	1.10	131.4	0.82	97.8

LIGHTING DATA Back-To-Back

Case Length	Door Size	OP45		OP7 Single Swing	
		120 Volts		120 Volts	
		Amps	Watts	Amps	Watts
4 Door	30"	0.72	86.2	0.55	66.0
6 Door	30"	1.08	130.4	0.82	98.4
8 Door	30"	1.46	174.6	1.09	130.8
10 Door	30"	1.82	218.8	1.36	163.2
12 Door	30"	2.20	263.0	1.63	195.6

GUIDELINES AND CONTROL SETTINGS

Application	Door	BTUH/Door		Superheat Set Point @ Bulb (°F)	Evaporator (°F)	Discharge Air (°F)	Discharge Air Velocity (FPM)
		Conventional	Parallel				
Frozen Food	Heated	852	838	3 - 5	- 7	- 1	400
Frozen Food	Low E	807	793	3 - 5	- 7	- 1	400
Ice Cream	Heated	918	896	3 - 5	- 15	- 8	400
Ice Cream	Low E	864	843	3 - 5	- 15	- 8	400



ONRIZ

ALL MEASUREMENTS ARE TAKEN PER ASHRAE-72 SPECIFICATIONS. HILLPHOENIX REFRIGERATED DISPLAY CASES FOR SALE IN THE UNITED STATES MEET OR EXCEED DEPARTMENT OF ENERGY 2017 REQUIREMENTS.

Rev. Date	Rev. #	Rev. Title
4-7-21	6	DATA UPDATE
7-13-20	5	DATA UPDATE

Hillphoenix
A DOVER COMPANY

ANTI CONDENSATE DATA Single-Side											
Case Length	Door Size	Individual Circuits									
		I90 Doors				ELMD,ELMH Doors				Door Frame	
		Heated Doors		Low E Doors		Heated Doors		Low E Doors		101-LE	
		120 Volts		120 Volts		120 Volts		120 Volts		120 Volts	
		Amps	Watts	Amps	Watts	Amps	Watts	Amps	Watts	Amps	Watts
2 Door	30"	0.53	63	0.32	38	0.59	71	0.35	42	1.19	143
3 Door	30"	0.79	95	0.48	57	0.89	107	0.53	63	1.67	200
4 Door	30"	1.05	126	0.63	76	1.18	142	0.70	84	2.18	262
5 Door	30"	1.32	158	0.79	95	1.48	178	0.88	105	2.64	317
6 Door	30"	1.58	190	0.95	114	1.78	213	1.05	126	3.13	376

ANTI CONDENSATE DATA Back-To-Back											
Case Length	Door Size	Individual Circuits									
		I90 Doors				ELMD,ELMH Doors				Door Frame	
		Heated Doors		Low E Doors		Heated Doors		Low E Doors		101-LE	
		120 Volts		120 Volts		120 Volts		120 Volts		120 Volts	
		Amps	Watts	Amps	Watts	Amps	Watts	Amps	Watts	Amps	Watts
4 Door	30"	1.06	126	0.64	76	1.18	142	0.70	84	2.38	286
6 Door	30"	1.58	190	0.96	114	1.78	214	1.06	126	3.34	400
8 Door	30"	2.10	252	1.26	152	2.36	284	1.40	168	4.36	524
10 Door	30"	2.64	316	1.58	190	2.96	356	1.76	210	5.28	634
12 Door	30"	3.16	380	1.90	228	3.56	426	2.10	252	6.26	752

DEFROST CONTROLS						
Defrosts Per Day	Electric Defrost			Hot Gas Defrost		
	Fail Safe (Min)	Termination Temp (°F)	Run Off Time (Min)	Fail Safe (Min)	Termination Temp (°F)	Run Off Time (Min)
1	46	50	13 - 15	24	73	13 - 15

NOTES:

- "----" indicates that this feature is not an option on this case model.
- Door / Frame A/S circuits and fans share the same circuit (same cycle). Default jumpers can be removed in field if separate circuits are desired for A/S and fans.
- Drain heater and fan motors share the same circuit (separate cycles). Electrical circuits must be properly sized to accommodate the higher current draw of the drain heater.
- Defrost heater 3-phase load is unbalanced.
- 3-phase defrost heater data listed represents the maximum amps per phase.
- Anti-condensate heat values for Low E doors represent a door with no heat on the glass.
- Listed discharge air velocity represents the average velocity at the peak of defrost.
- Temperature and defrost settings listed above are recommended start-up settings. Final operational settings may need to be adjusted for

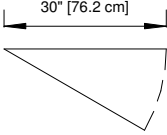
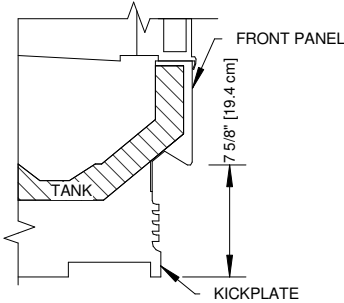
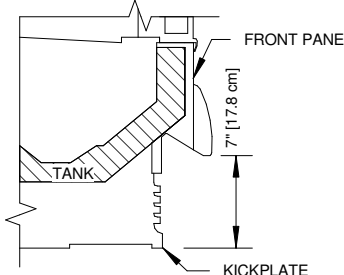
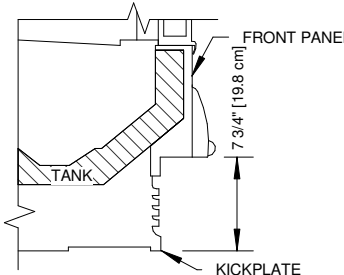
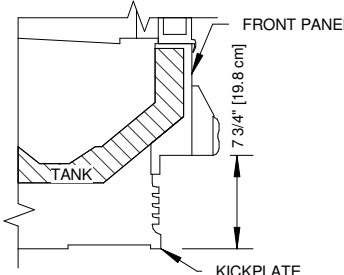


ALL MEASUREMENTS ARE TAKEN PER ASHRAE-72 SPECIFICATIONS. HILLPHOENIX REFRIGERATED DISPLAY CASES FOR SALE IN THE UNITED STATES MEET OR EXCEED DEPARTMENT OF ENERGY 2017 REQUIREMENTS.

ONRIZ

Rev. Date	Rev. #	Rev. Title
4-7-21	6	DATA UPDATE
7-13-20	5	DATA UPDATE



DOOR OPTIONS	FRONT OPTIONS
<p>STANDARD SWING DOOR 4, 6, 8, 10 & 12 - DOOR CASES</p>  <p>30° [76.2 cm]</p>	<p>FLAT FRONT (O SERIES)</p>  <p>FRONT PANEL 7 5/8" [19.4 cm] TANK KICKPLATE</p>
	<p>STREAMLINE BUMPER</p>  <p>FRONT PANEL 7" [17.8 cm] TANK KICKPLATE</p>
	<p>HALF BUMPER</p>  <p>FRONT PANEL 7 3/4" [19.8 cm] TANK KICKPLATE</p>
	<p>CLASSIC 2 BUMPER</p>  <p>FRONT PANEL 7 3/4" [19.8 cm] TANK KICKPLATE</p>

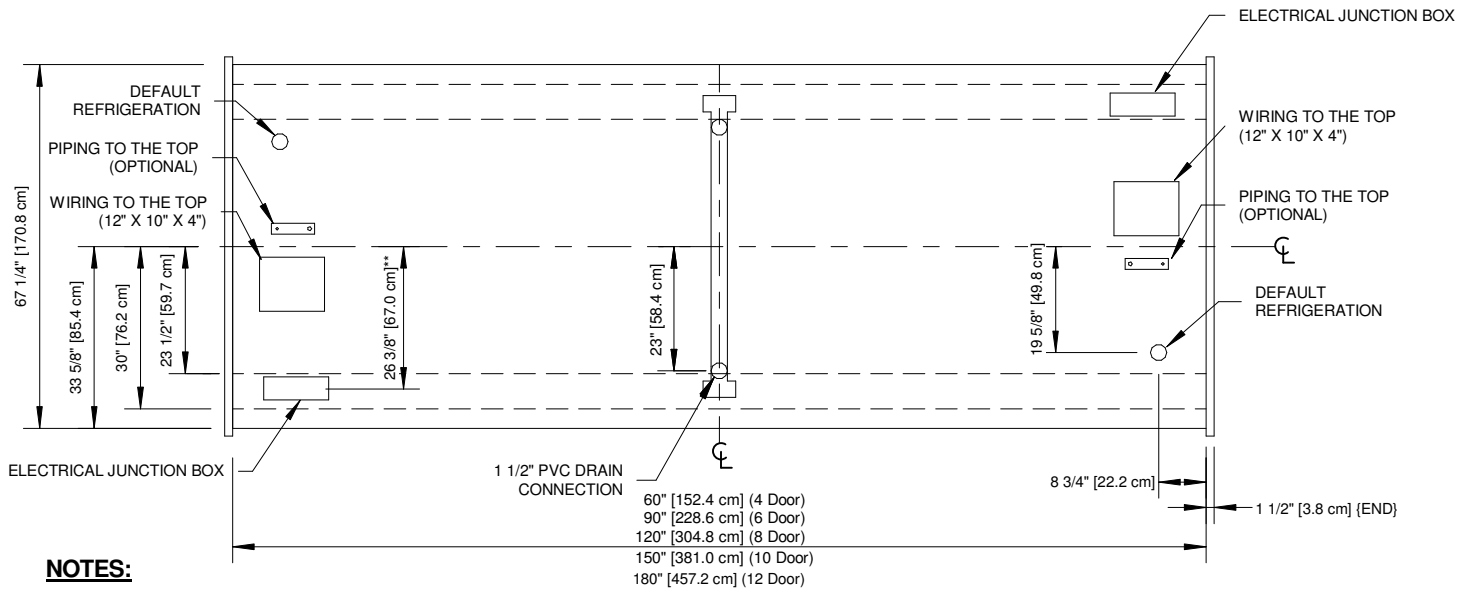
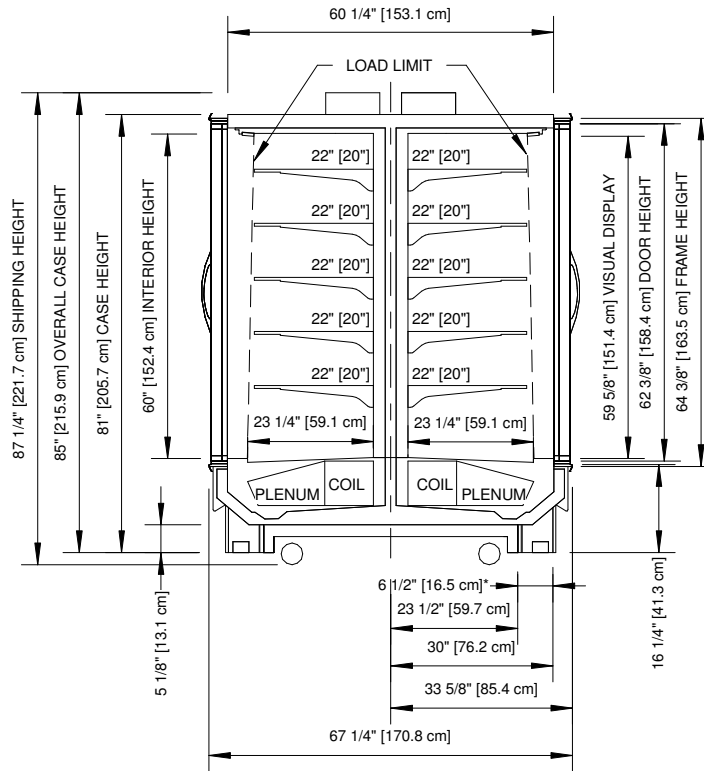


ALL MEASUREMENTS ARE TAKEN PER ASHRAE-72 SPECIFICATIONS. HILLPHOENIX REFRIGERATED DISPLAY CASES FOR SALE IN THE UNITED STATES MEET OR EXCEED DEPARTMENT OF ENERGY 2017 REQUIREMENTS.

ONRIZ

Rev. Date	Rev. #	Rev. Title
4-7-21	6	DATA UPDATE
7-13-20	5	DATA UPDATE

Hillphoenix
A DOVER COMPANY



NOTES:

- * : STUB-UP AREA
- ** : RECOMMENDED STUB-UP CENTERLINE FOR ELECTRICAL AND HUB DRAINS

- Ends add approximately 1" to case height, 1/2" to the back & 1" to the front.
- Wiring adds approximately 4 inches to case height.



ALL MEASUREMENTS ARE TAKEN PER ASHRAE-72 SPECIFICATIONS. HILLPHOENIX REFRIGERATED DISPLAY CASES FOR SALE IN THE UNITED STATES MEET OR EXCEED DEPARTMENT OF ENERGY 2017 REQUIREMENTS.

ONRIZ

Rev. Date	Rev. #	Rev. Title
4-7-21	6	DATA UPDATE
7-13-20	5	DATA UPDATE

Hillphoenix
A DOVER COMPANY