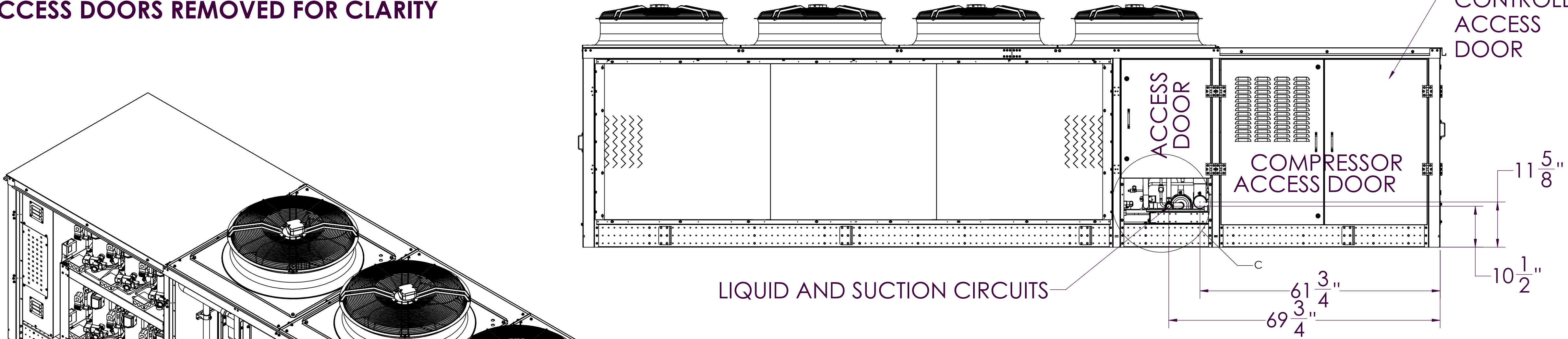
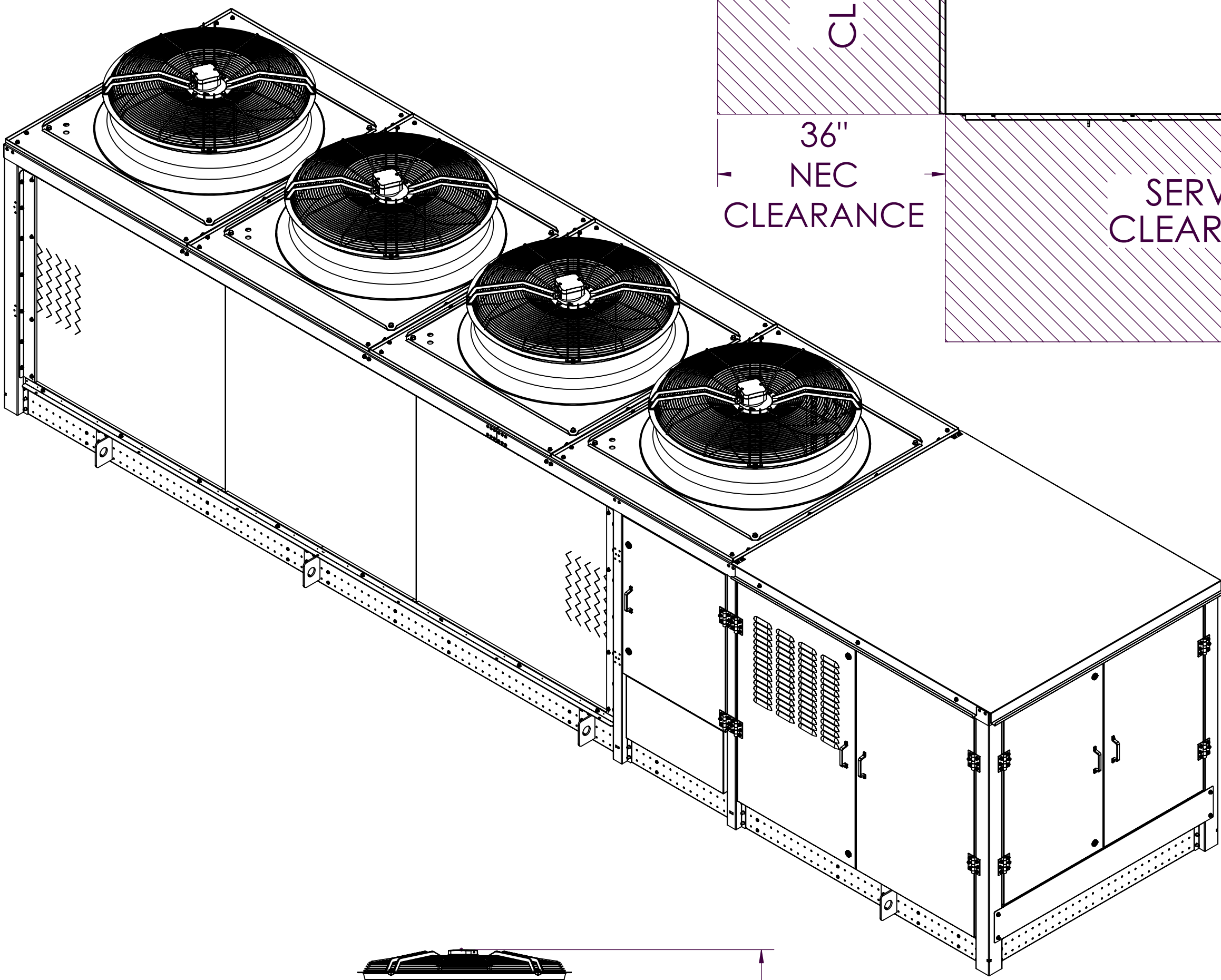
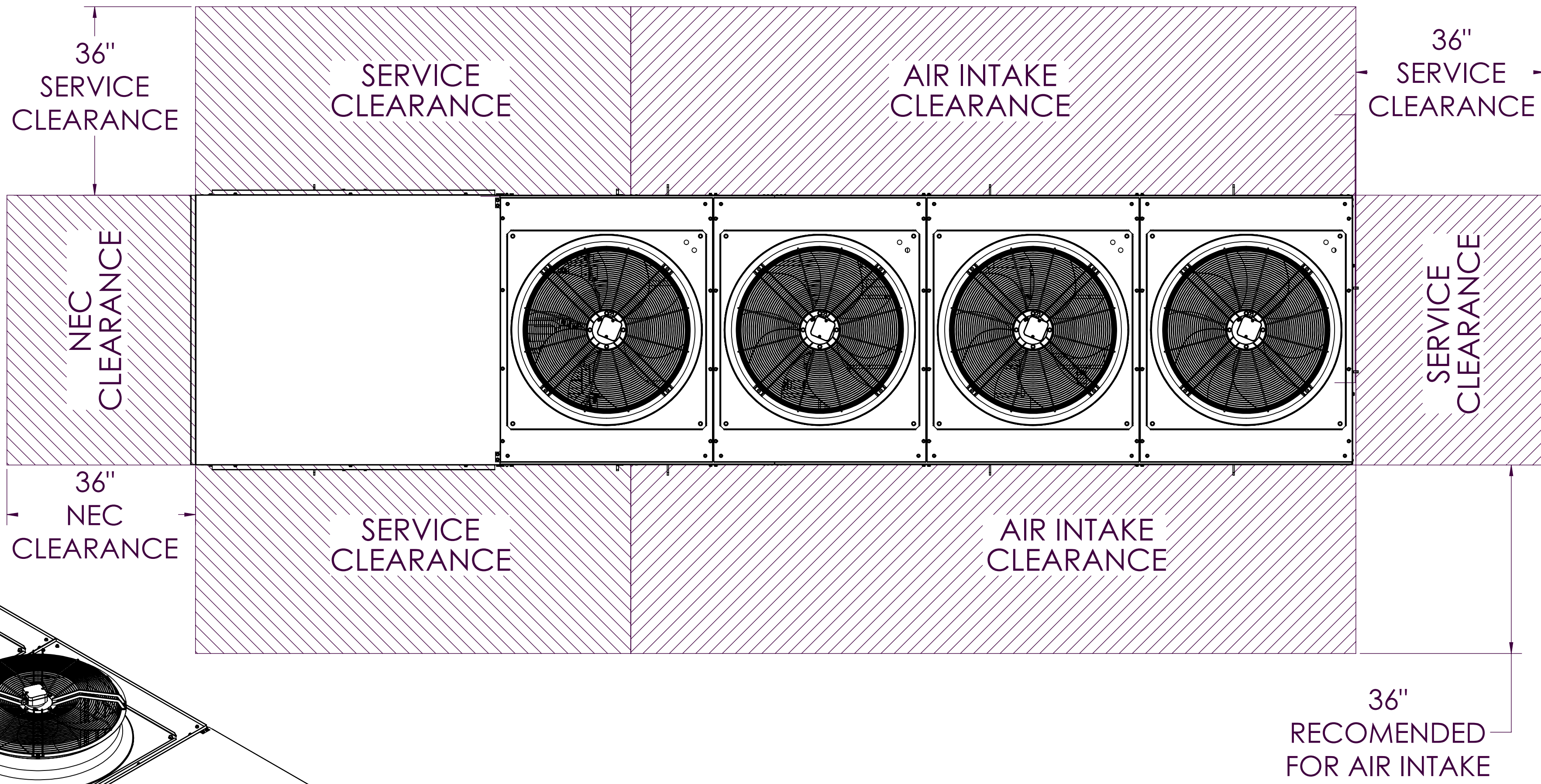
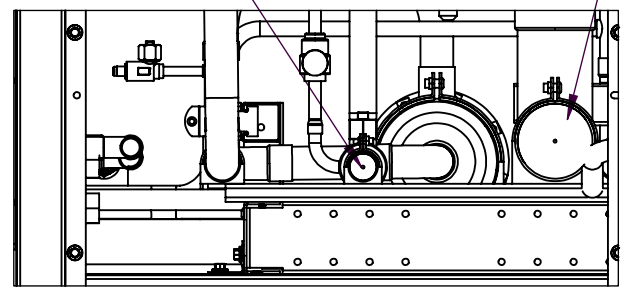


ACCESS DOORS REMOVED FOR CLARITY

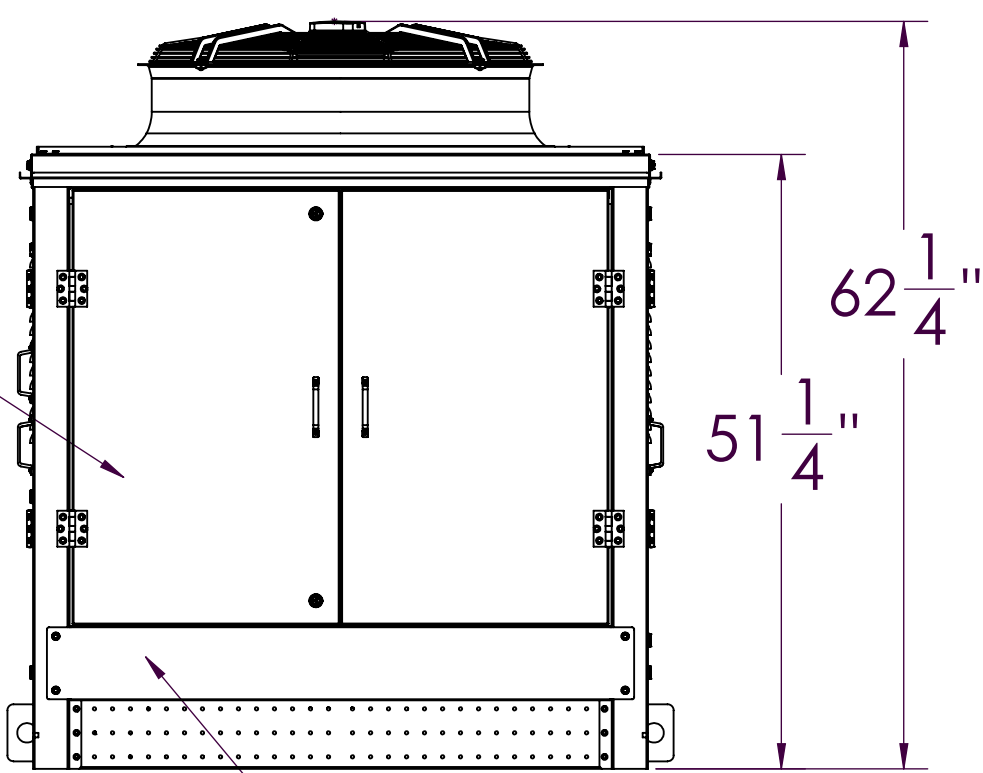


LIQUID

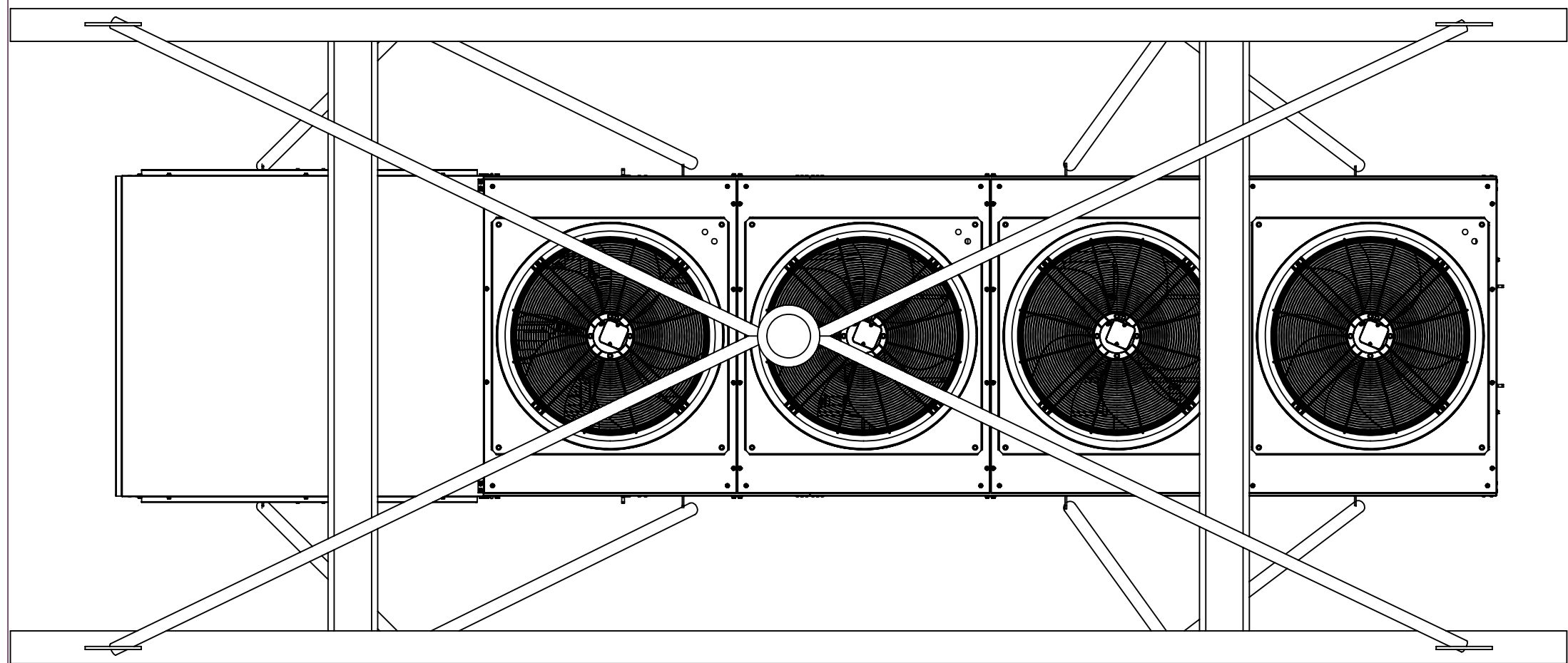
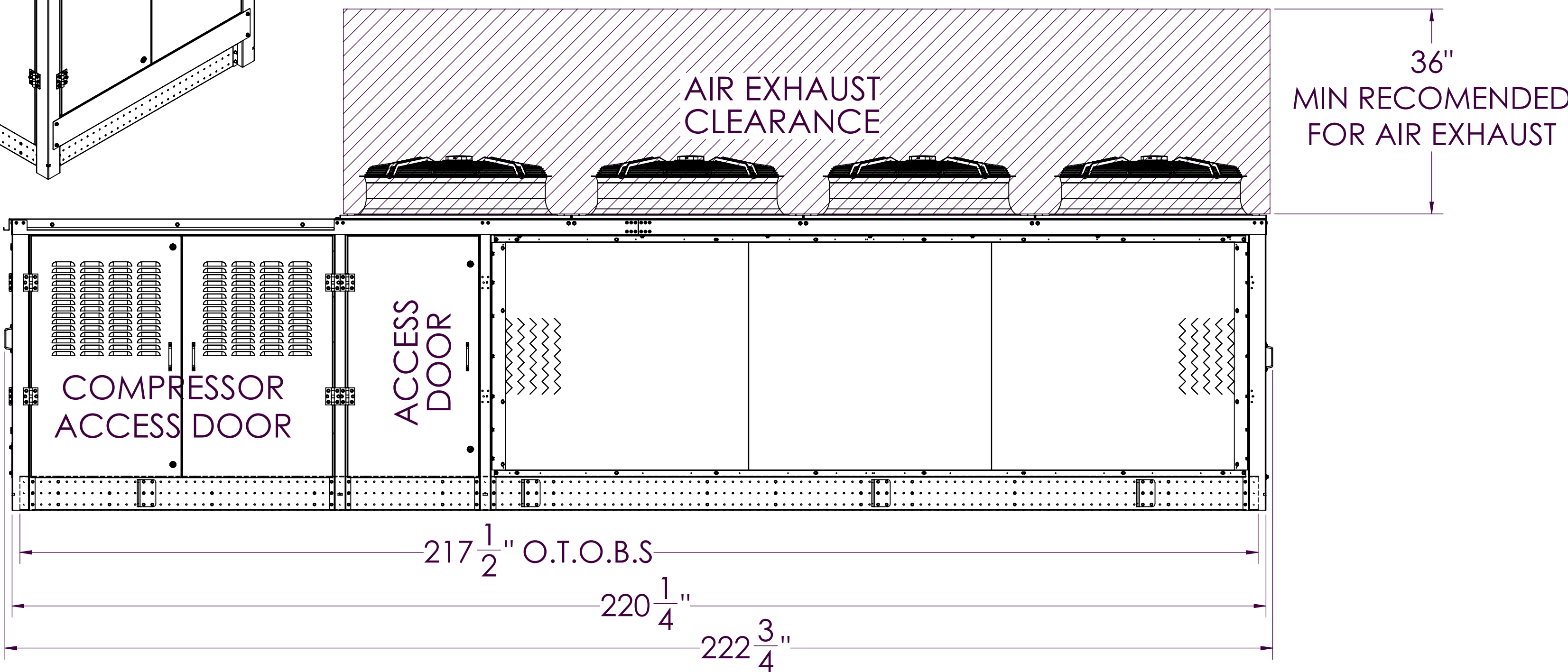
SUCTION



CONTROL PANEL ACCESS DOOR



ELECTRICAL INPUT ACCESS

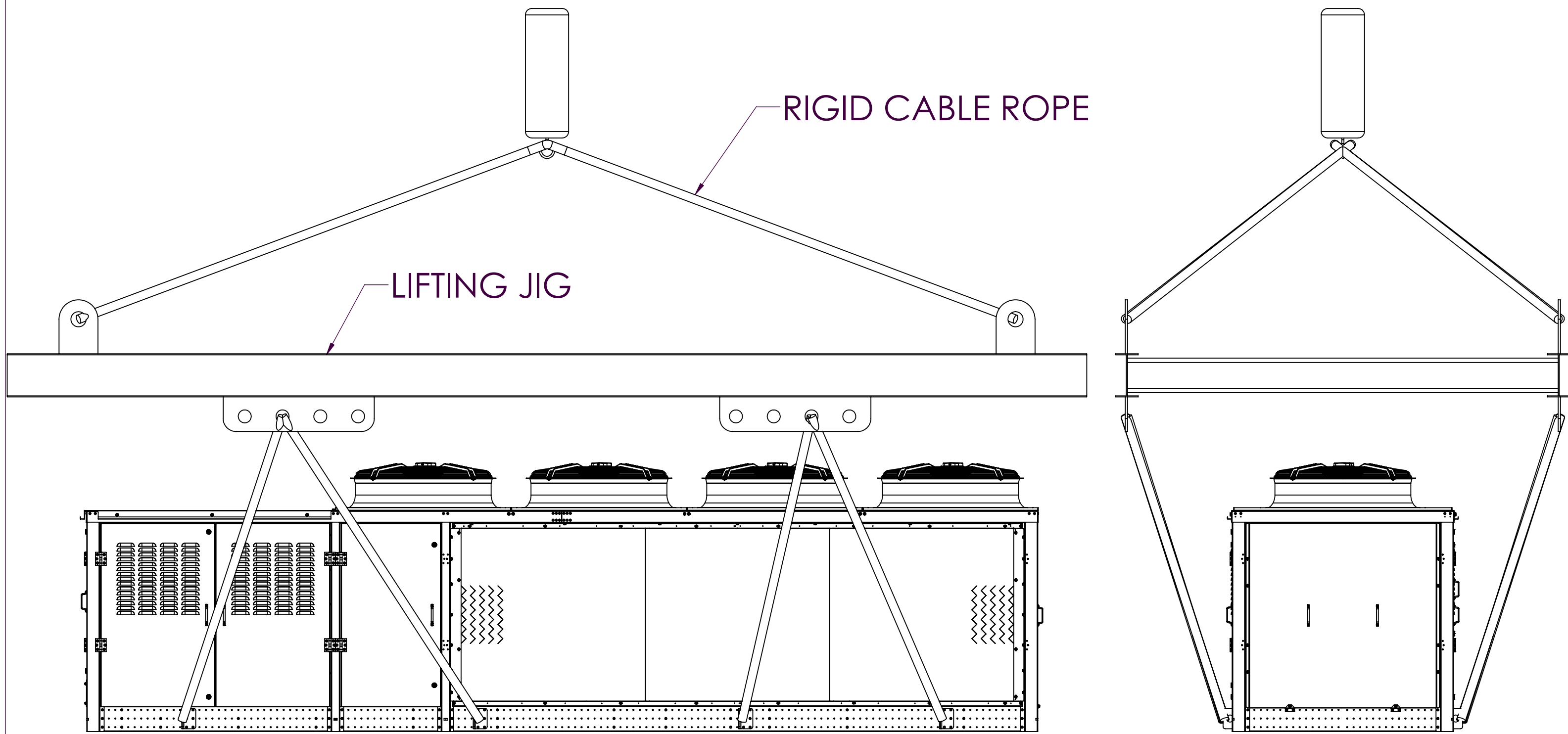
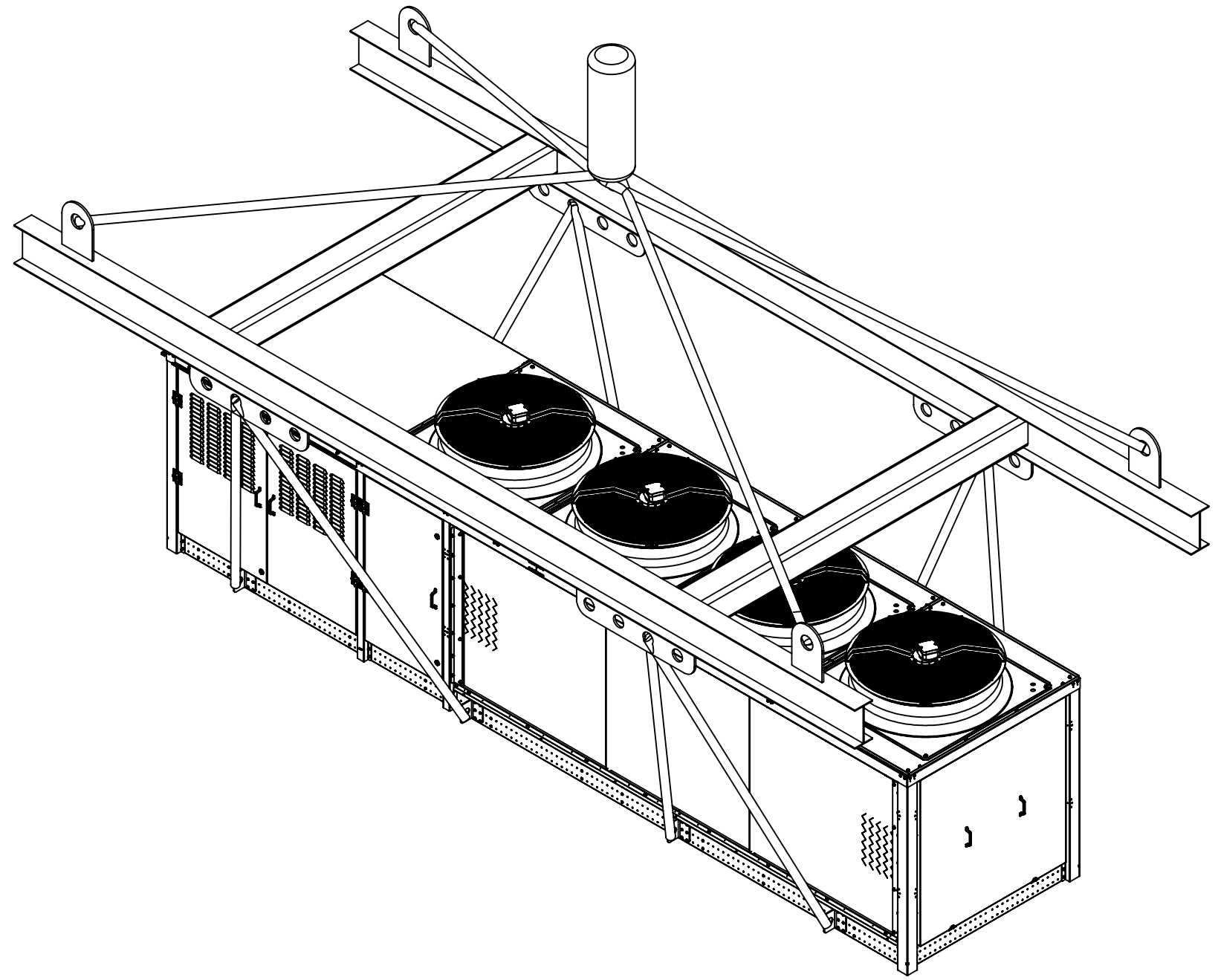


LIFTING DETAILS:

CABLES NEED TO BE ADJUSTED, TO ENSURE THE UNIT IS LEVEL WHEN LIFTED.

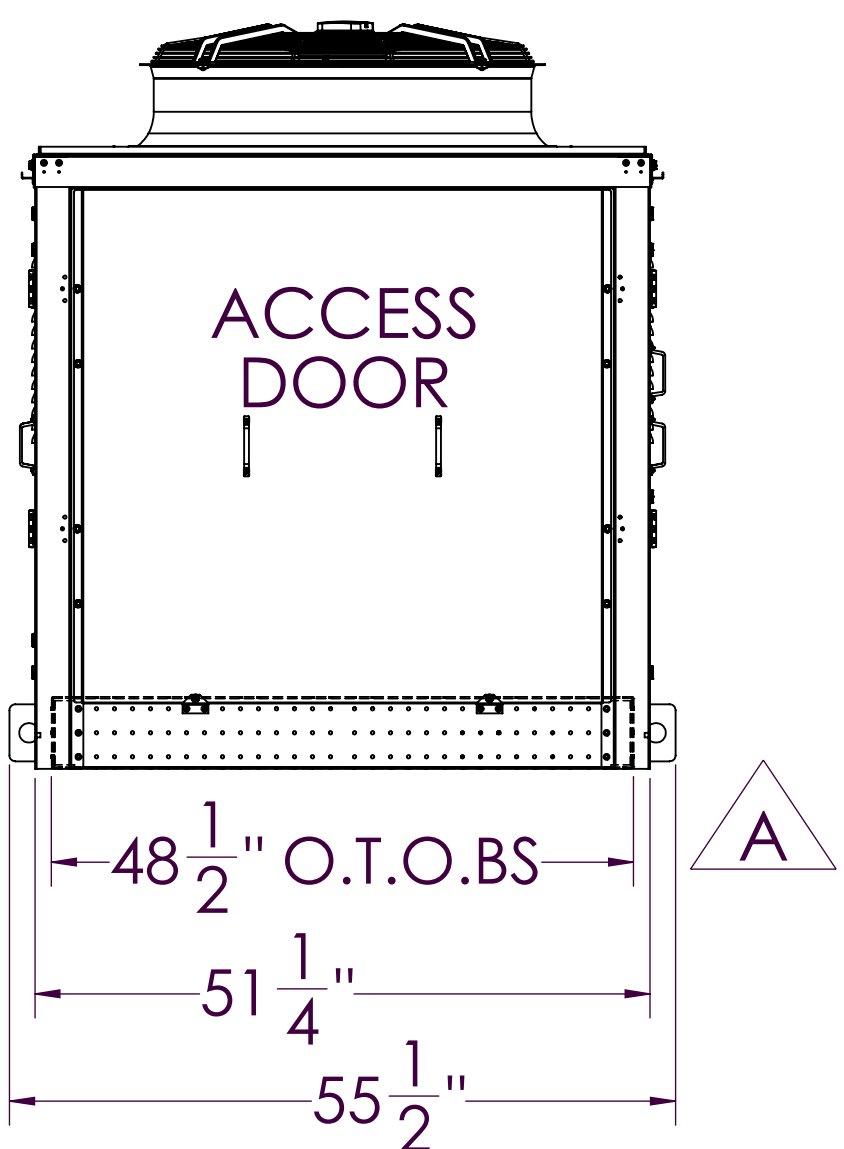
NON LEVEL UNITS WHEN RIGGID WILL PLACE TOO MUCH STRESS IN LIFTING POINTS AND BASE FRAME WHICH RESULT IN FAILURE

USE ALL LIFTING POINTS



LIFTING DIAGRAM

MODEL	WEIGHT (LBS)	SUCTION LOOP		LIQUID LOOP	
		LT	MT	LT	MT
ADP-M0442-L0000	4000	N/A	3-1/8	N/A	1-1/8



NOTE:
1. ADAPTAPAK UNIT FLOOR IS NOT DESIGNED TO BE WEATHER TIGHT AND IS RECOMMENDED TO SIT ON STEEL DUNNAGE ABOVE THE FINISHED ROOF.
2. REFRIGERATION STUBS ARE ONLY AVAILABLE AS SIDE ACCESS AS SHOW
3. THE INSTALLING CONTRACTOR IS RESPONSIBLE FOR MAKING SURE THAT THE INSTALLATION CONFORMS TO ALL APPLICABLE CODE REQUIREMENTS

REVISION RECORD				P/N: AS00099585-SUBMITTAL	
REV	DATE	BY	DESCRIPTION	DATE	BY
1	14JUN2021	SSM	CONTRACTED REVISED	14JUN2021	SSM
2					
3					
4					
5					
6					
7					
8					
9					
10					
11					
12					
13					
14					
15					
16					
17					
18					
19					
20					
21					
22					
23					
24					
25					
26					
27					
28					
29					
30					
31					
32					
33					
34					
35					
36					
37					
38					
39					
40					
41					
42					
43					
44					
45					
46					
47					
48					
49					
50					
51					
52					
53					
54					
55					
56					
57					
58					
59					
60					
61					
62					
63					
64					
65					
66					
67					
68					
69					
70					
71					
72					
73					
74					
75					
76					
77					
78					
79					
80					
81					
82					
83					
84					
85					
86					
87					
88					
89					
90					
91					
92					
93					
94					
95					
96					
97					
98					
99					
100					