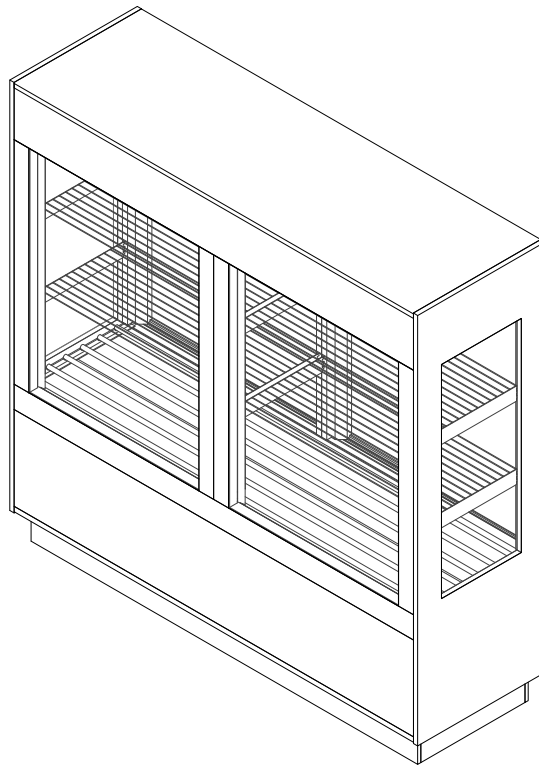


GENERAL NOTES:

- "---" Indicates that the feature is not an option on this case model and/or the data is not yet available at this time.
- RRS - Refrigerated Rear Storage (optional)



SHIPPING WEIGHT	
Case	Weight
AGB-RG	---



ENGINEERED FOR STORES WITH AMBIENT CONDITIONS NOT TO EXCEED 75° AND 55% RELATIVE HUMIDITY. DUE TO ENGINEERING IMPROVEMENTS SPECIFICATIONS MAY CHANGE WITHOUT NOTICE. ALL MEASUREMENTS ARE TAKEN PER ASHRAE-72 SPECIFICATIONS. HILLPHOENIX REFRIGERATED DISPLAY CASES FOR SALE IN THE UNITED STATES MEET OR EXCEED DEPARTMENT OF ENERGY 2017 REQUIREMENTS. NUMBERS ARE BASED ON STANDARD CASE SIZES. CONSULT ENGINEERING.

AGB-RG

Rev. Date	Rev. #	Rev. Title
03-10-22	3	DATA UPDATE
09-02-21	2	DATA UPDATE



ELECTRICAL DATA											
Case Length	Fans Per Case	High Efficiency Fans		Anti-Condensate Fans		Drain Heaters		Optional Defrost Heaters		Humidification	
		120 Volts		120 Volts		120 Volts		208 Volts		120 Volts	
		Amps	Watts	Amps	Watts	Amps	Watts	Amps	Watts	Amps	Watts
4'	---	---	---	---	---	---	---	---	---	---	---
6'	---	---	---	---	---	---	---	---	---	---	---
8'	---	---	---	---	---	---	---	---	---	---	---

Light Length	Clearvoyant 4 LED Lighting (Vertical) Standard Output		Clearvoyant 4 LED Lighting (Vertical) Standard Output	
	120 Volts		120 Volts	
	Amps	Watts	Amps	Watts
46 1/8"	0.20	23.5	0.50	59.8

GUIDELINES AND CONTROL SETTINGS (DX) {DIRECT EXPANSION HFC/CO2}						
	BTUH/ft		Superheat Set Point @ Bulb (°F)	Evaporator (°F)	Discharge Air (°F)	Discharge Air Velocity (FPM)
	Conventional	Parallel				
Gravity Coil	700	500	12	15	28	---
Serpentine	115	100	8 - 10	33	---	---
RRS	255	200	8 - 10	---	28	---

GUIDELINES AND CONTROL SETTINGS (GLYCOL) {DIRECT EXPANSION HFC/CO2}							
	BTUH/ft		Supply Temp (°F)	Flow Rate (GPM/ft)	Charge (gal/ft)	Cut-In Temp (°F)	Cut-Out Temp (°F)
	Conventional	Parallel					
Gravity Coil	452	355	20	0.8	0.5	---	---
Serpentine	63	50	20	0.1	0.5	---	---
RRS	255	200	20	0.1	0.5	28	26

DEFROST CONTROLS {DIRECT EXPANSION HFC/CO2}								
	Defrosts Per Day	Run-Off Time (Min)	Electric Defrost		Timed-Off Defrost		Hot Gas Defrost	
			Fail-Safe (Min)	Termination Temp (°F)	Fail-Safe (Min)	Termination Temp (°F)	Fail-Safe (Min)	Termination Temp (°F)
Serpentine	---	---	---	---	---	---	---	---
Gravity Coil	4	---	---	---	90	47	---	---
RRS	6	---	---	---	20	47	---	---

- NOTES:**
- "—" Indicates that the feature is not an option on this case model and/or the data is not yet available at this time.
 - Optional humidification system available to boost humidity. Humidity levels are determined by store aged beef programs.
 - RRS - Refrigerated Rear Storage.
 - EPR valve for the Serpentine is factory installed.
 - Listed discharge air velocity represents the average velocity at the peak of defrost.
 - Listed defrost for the Serpentine is tied to the gravity coil.
 - DX units equipped with RH systems require 2 defrosts per day with a fail-safe of 120 minutes.
 - Glycol units equipped with RH systems require 3 defrosts per day with a fail-safe of 120 minutes.
 - Discharge air temperature values represent readings taken within the upper air channel immediately behind/upstream of the honeycomb.

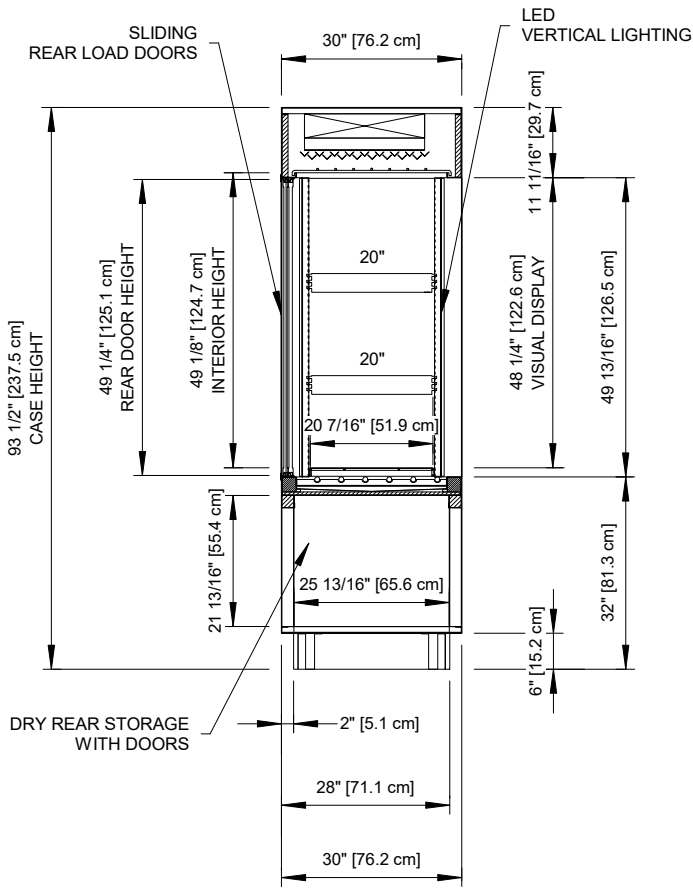


ENGINEERED FOR STORES WITH AMBIENT CONDITIONS NOT TO EXCEED 75° AND 55% RELATIVE HUMIDITY. DUE TO ENGINEERING IMPROVEMENTS SPECIFICATIONS MAY CHANGE WITHOUT NOTICE. ALL MEASUREMENTS ARE TAKEN PER ASHRAE-72 SPECIFICATIONS. HILLPHOENIX REFRIGERATED DISPLAY CASES FOR SALE IN THE UNITED STATES MEET OR EXCEED DEPARTMENT OF ENERGY 2017 REQUIREMENTS. NUMBERS ARE BASED ON STANDARD CASE SIZES. CONSULT ENGINEERING.

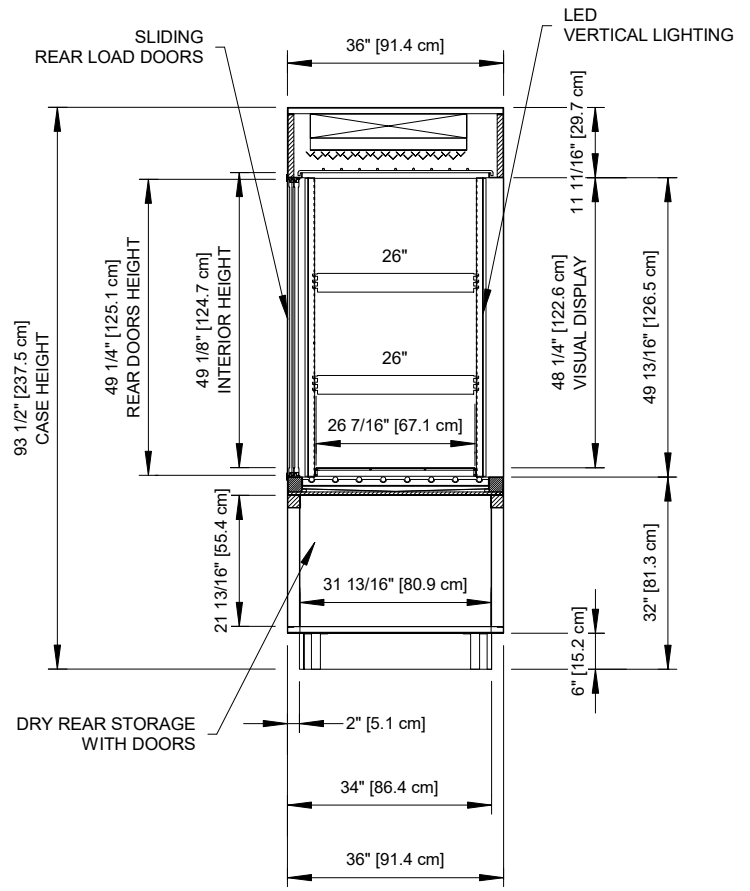
AGB-RG

Rev. Date	Rev. #	Rev. Title
03-10-22	3	DATA UPDATE
09-02-21	2	DATA UPDATE

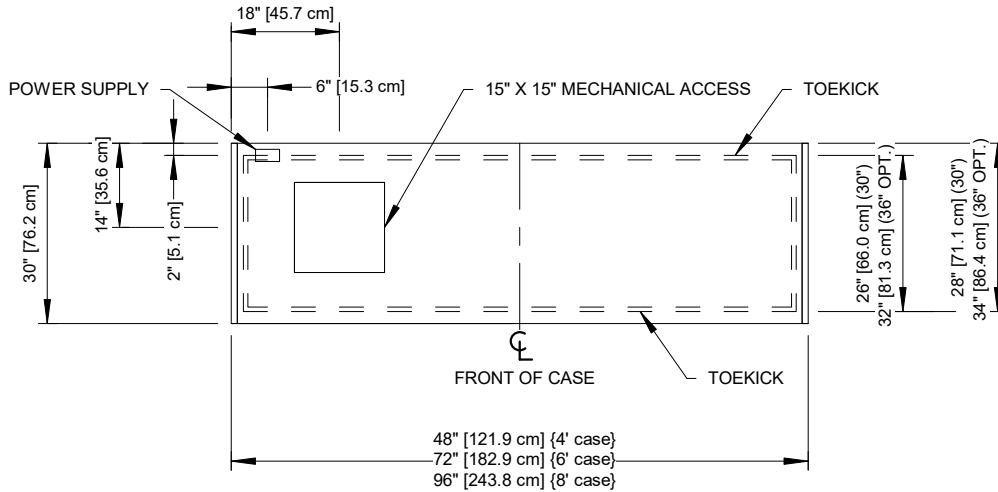




30" PROFILE



36" PROFILE (OPTIONAL)



Intertek Intertek

ENGINEERED FOR STORES WITH AMBIENT CONDITIONS NOT TO EXCEED 75° AND 55% RELATIVE HUMIDITY. DUE TO ENGINEERING IMPROVEMENTS SPECIFICATIONS MAY CHANGE WITHOUT NOTICE. ALL MEASUREMENTS ARE TAKEN PER ASHRAE-72 SPECIFICATIONS. HILLPHOENIX REFRIGERATED DISPLAY CASES FOR SALE IN THE UNITED STATES MEET OR EXCEED DEPARTMENT OF ENERGY 2017 REQUIREMENTS. NUMBERS ARE BASED ON STANDARD CASE SIZES. CONSULT ENGINEERING.

AGB-RG

Rev. Date	Rev. #	Rev. Title
03-10-22	3	DATA UPDATE
09-02-21	2	DATA UPDATE