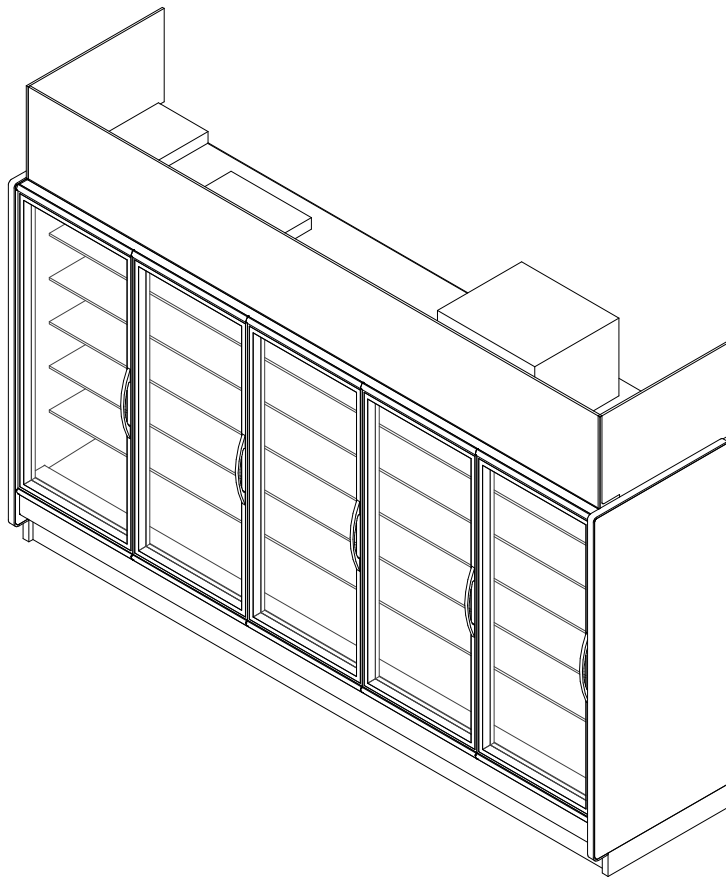


GENERAL NOTES:

- Lighting Controls and Anti Sweat Heat Controls are Required
- Option 1: OEM Provided: Occupancy Sensor Based Lighting Controls (On/Off) & Hillphoenix provided embedded Anti Sweat Controls are standard, unless otherwise specified
- Option 2: End User Provided: Lighting Controls should be Occupancy Sensor Based or on a minimum 8 Hour Off Schedule. Customer provided A/S Heat Controls should be set to 30% minimum off time at 75°F/55%RH
- 2,3,4 & 5 door lengths available in 208V R448A condensing unit configuration.



| SHIPPING WEIGHT | |
|-----------------|--------|
| Case | Weight |
| JNRBHSA | --- |



ALL MEASUREMENTS ARE TAKEN PER ASHRAE-72 SPECIFICATIONS. HILLPHOENIX REFRIGERATED DISPLAY CASES FOR SALE IN THE UNITED STATES MEET OR EXCEED DEPARTMENT OF ENERGY 2017 REQUIREMENTS.

JNRBHSA

| Rev. Date | Rev. # | Rev. Title |
|-----------|--------|----------------|
| 02-07-23 | 20 | ENDVIEW UPDATE |
| 04-21-22 | 19 | NOTES UPDATED |



| SYSTEM REQUIREMENT (R-448A REFRIGERANT) | | | | | | |
|---|-------|-------|----------------|--------------------------|--------------------------------|-------------------------|
| Case Length | Volts | Phase | Frequency (Hz) | Minimum Circuit Ampacity | Maximum Overcurrent Protection | 24hr Energy Usage (kWh) |
| 2 Door | 208 | 1 | 60 | 12.8 | 15.0 | 6.4 |
| 3 Door | 208 | 1 | 60 | 12.9 | 15.0 | 7.2 |
| 4 Door | 208 | 1 | 60 | 13.1 | 15.0 | 11.6 |
| 5 Door | 208 | 1 | 60 | 17.6 | 20.0 | 13.7 |

| GUIDELINES AND CONTROL SETTINGS (R-448A REFRIGERANT) | | | | | |
|--|--------------------------|---------------------------------|--------------------|-----------------------------|------------------------------|
| Case Length | Application | Superheat Set Point @ Bulb (°F) | Discharge Air (°F) | Set Point Differential (°F) | Discharge Air Velocity (FPM) |
| 2-5 Door | Beverage | 6 - 8 | 35 | 6 | 230 |
| 2-5 Door | Bakery/Dairy/Cut Produce | 6 - 8 | 30 | 6 | 230 |
| 2-5 Door | Deli | 6 - 8 | 29 | 6 | 230 |

| CONDENSING UNIT DATA (R-448A REFRIGERANT) | | | | | | | | |
|---|-------|-------|----------------|------------|-------------------------|-------------------------|-------------|-------------------|
| Case Length | Volts | Phase | Frequency (Hz) | Horsepower | Running Load Amps (RLA) | Locked Rotor Amps (LRA) | Refrigerant | Refrigerant (Lbs) |
| 2 Door | 208 | 1 | 60 | 1/3 | 3.6 | 17.5 | R448A | 3.0 |
| 3 Door | 208 | 1 | 60 | 1/3 | 3.6 | 17.5 | R448A | 3.0 |
| 4 Door | 208 | 1 | 60 | 1/3 | 3.6 | 17.5 | R448A | 3.0 |
| 5 Door | 208 | 1 | 60 | 1/2 | 4.6 | 22.0 | R448A | 3.0 |

| DEFROST CONTROLS (R-448A REFRIGERANT) | | | | |
|---------------------------------------|------------------|--------------------|-----------------|-----------------------|
| Case Length | Defrosts Per Day | Run-Off Time (Min) | Fail-Safe (Min) | Termination Temp (°F) |
| 2-5 Door | 2 | 0 | 46 | 44 |

| DEFROST SCHEDULE (R-448A REFRIGERANT) | |
|---------------------------------------|-------------------|
| Defrosts Per Day | Time |
| 2 | 12 a.m. - 12 p.m. |

NOTES:

- "---" indicates that this feature is not an option on this case model.
- Listed discharge air velocity represents the average velocity at the peak of defrost.
- Temperature and defrost settings listed below are recommended start-up settings. Final operational settings may need to be adjusted for the store conditions in which the case operates.
- The recommended evaporator temperatures may need to be adjusted based on system setup, store conditions, etc. The minimum recommended evaporator temperature is 4°F below the listed evaporator temperature.
- The 24 Hour Energy Value is based upon AHRI 1200 test conditions with Hillphoenix provided evaporator fans, condensing unit, LED lights, occupancy sensor based (on/off) lighting control, dew point based anti-sweat heat controller, condensate pump, evaporator pan, heated door frame, and un heated glass doors/off cycle defrost on medium temp cases.
- Discharge air temperature values represent readings taken within the upper air channel immediately behind/upstream of the honeycomb.

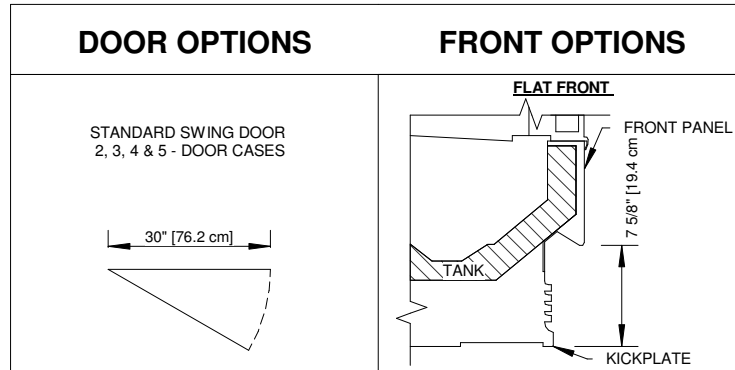


ALL MEASUREMENTS ARE TAKEN PER ASHRAE-72 SPECIFICATIONS. HILLPHOENIX REFRIGERATED DISPLAY CASES FOR SALE IN THE UNITED STATES MEET OR EXCEED DEPARTMENT OF ENERGY 2017 REQUIREMENTS.

JNRBHSA

| Rev. Date | Rev. # | Rev. Title |
|-----------|--------|----------------|
| 02-07-23 | 20 | ENDVIEW UPDATE |
| 04-21-22 | 19 | NOTES UPDATED |

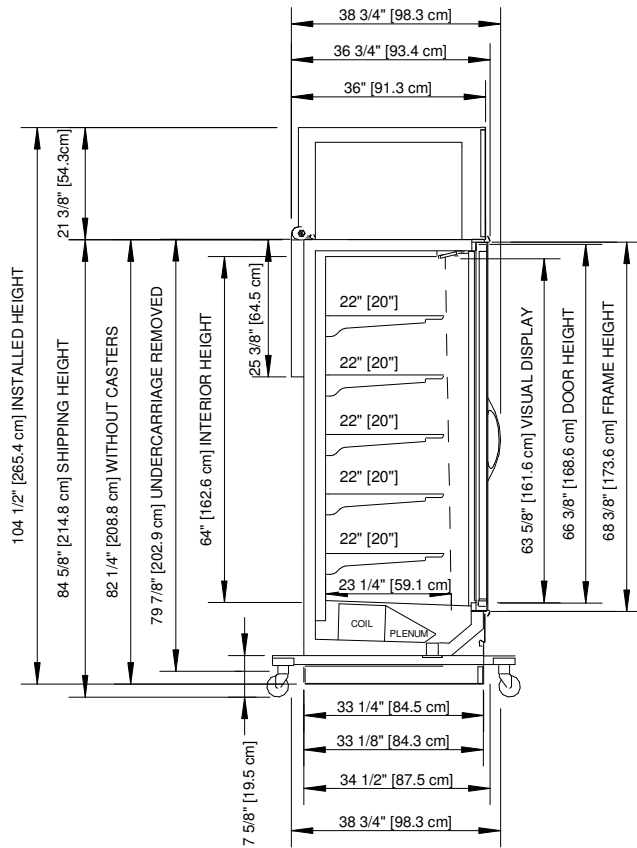
Hillphoenix
A DOVER COMPANY



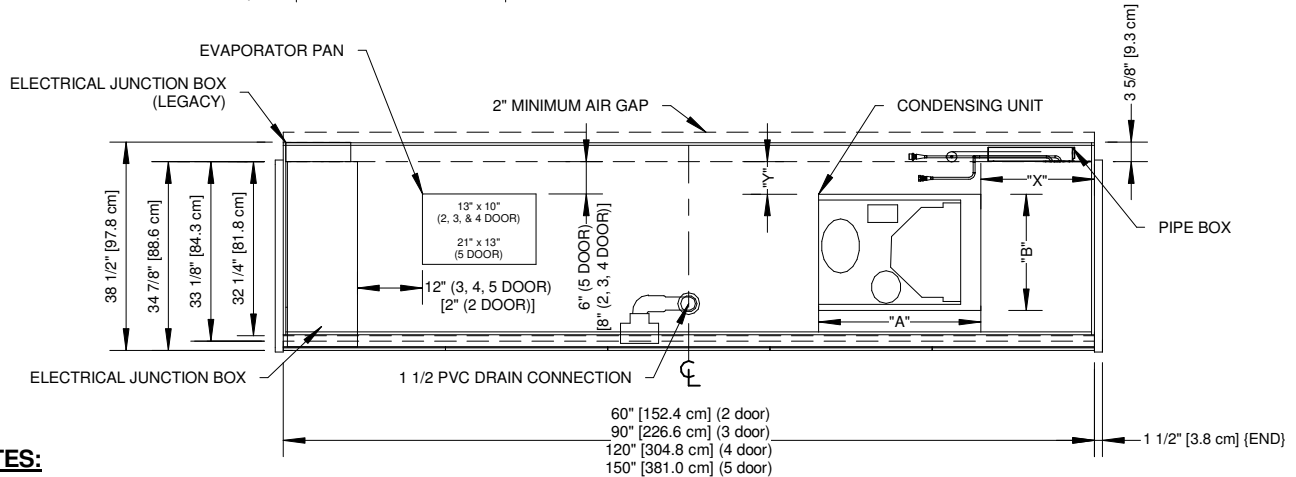
ALL MEASUREMENTS ARE TAKEN PER ASHRAE-72 SPECIFICATIONS. HILLPHOENIX REFRIGERATED DISPLAY CASES FOR SALE IN THE UNITED STATES MEET OR EXCEED DEPARTMENT OF ENERGY 2017 REQUIREMENTS.

JNRBHSA

| Rev. Date | Rev. # | Rev. Title |
|-----------|--------|----------------|
| 02-07-23 | 20 | ENDVIEW UPDATE |
| 04-21-22 | 19 | NOTES UPDATED |



| CONDENSING UNIT SIZE AND POSITION R448A | | | | |
|---|-------|-------|-------|-------|
| CASE LENGTH | 2DR | 3DR | 4DR | 5DR |
| "X" | 23" | 23" | 23" | 23" |
| "Y" | 6" | 6" | 6" | 6" |
| "A" | 19.0" | 19.0" | 19.0" | 19.0" |
| "B" | 14.0" | 14.0" | 14.0" | 14.0" |



NOTES:

- * : STUB-UP AREA.
- ** : RECOMMENDED STUB-UP CENTERLINE FOR ELECTRICAL AND HUB DRAINS.

- Specialized Base Frame:
 - Case fits through 80" doorway in the as shipped configuration with 2" fork lift brackets.
 - 2" lifting brackets (installed) & 3.25" ship loose risers combine for 5" baseframe once installed.
 - Drain traps ship loose.
 - Ends add approximately 1" to case height, 1/2" to the back & 1" to the front.



JNRBHSA

ALL MEASUREMENTS ARE TAKEN PER ASHRAE-72 SPECIFICATIONS. HILLPHOENIX REFRIGERATED DISPLAY CASES FOR SALE IN THE UNITED STATES MEET OR EXCEED DEPARTMENT OF ENERGY 2017 REQUIREMENTS.

| Rev. Date | Rev. # | Rev. Title |
|-----------|--------|----------------|
| 02-07-23 | 20 | ENDVIEW UPDATE |
| 04-21-22 | 19 | NOTES UPDATED |

