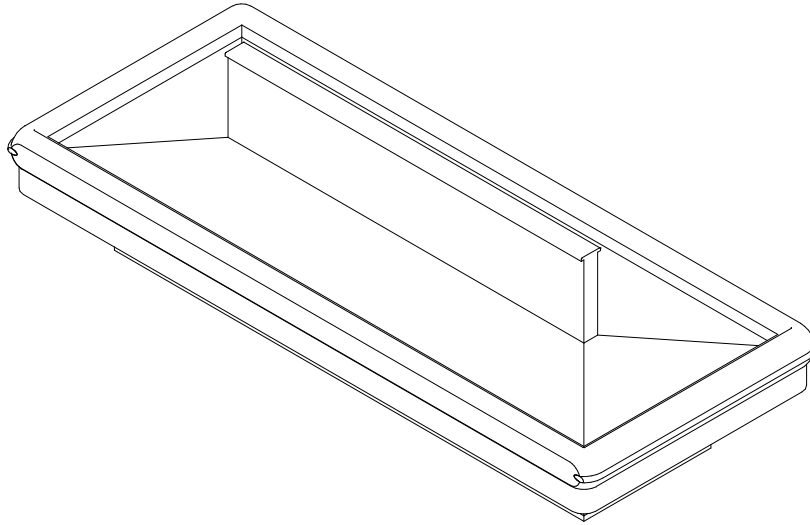


**GENERAL NOTES**

- "----" indicates the feature is not an option for this model and/or the data is not yet available.



SHIPPING WEIGHT	
Case	Weight
ONIP	----



ALL MEASUREMENTS ARE TAKEN PER ASHRAE-72-2005 SPECIFICATIONS. HILLPHOENIX REFRIGERATED DISPLAY CASES FOR SALE IN THE UNITED STATES MEET OR EXCEED DEPARTMENT OF ENERGY 2017 REQUIREMENTS.

**ONIP**

Rev. Date	Rev. #	Rev. Title
9-26-19	3	DATA UPDATE
7-19-18	2	NEW STANDARDS

ELECTRICAL DATA					
Case Length	Fans Per Case	High Efficiency Fans		Anti Condensate Heaters	
		120 Volt		120 Volts	
		Amps	Watts	Amps	Watts
8'	6	0.90	66.80	0.23	28.0
12'	8	1.20	88.0	55.0	66.0

GUIDELINES AND CONTROL SETTINGS					
BTUH/ft		Superheat Set Point @ Bulb (°F)	Evaporator (°F)	Discharge Air (°F)	Discharge Air Velocity (FPM)
Conventional	Parallel				
631	586	6 - 8	22	34	140

DEFROST CONTROLS			
Defrosts Per Day	Run Off Time (Min)	Timed-Off Defrost	
		Fail-Safe (Min)	Termination Temp (°F)
3	6 - 8	44	38

## NOTES

- "---" indicates the feature is not an option for this model and/or the data is not yet available.
- Load data represents the sum of both coils.
- Add 600 BTUH per wrap-around end.
- BTUH load increases by 132 BTUH/ft when aftermarket merchandising accessories are utilized.
- Listed discharge air velocity represents the average velocity at the peak of defrost.
- Temperature and defrost settings listed above are recommended start-up settings. Final operational settings may need to be adjusted for the store conditions in which the case operates.
- The recommended evaporator temperatures may need to be adjusted based on system setup, store conditions, etc. The minimum recommended evaporator temperature is 4°F below the listed evaporator temperature.



ALL MEASUREMENTS ARE TAKEN PER ASHRAE-72-2005 SPECIFICATIONS. HILLPHOENIX REFRIGERATED DISPLAY CASES FOR SALE IN THE UNITED STATES MEET OR EXCEED DEPARTMENT OF ENERGY 2017 REQUIREMENTS.

ONIP

Rev. Date	Rev. #	Rev. Title
9-26-19	3	DATA UPDATE
7-19-18	2	NEW STANDARDS

**Hillphoenix**  
A DOVER COMPANY

**SECOND NATURE DATA**

Case Model	No. of Coils	Application	Front Sill Type	BTUH/ft (DR)		GPM/ft (DR)	Supply Fluid Temp (°F)	Discharge Air Temp (°F)
				Conventional	Parallel			
ONIP	2	Bulk Produce	Standard	1831	1786	0.50	20	34

**SECOND NATURE DATA**

Case Model	No. of Coils	Application	Front Sill Type	No. of Defrost	Timed Off Defrost		Warm Fluid Defrost	
					Fail Safe (Min)	Termination Temp (°F)	Fail Safe (Min)	Termination Temp (°F)
ONIP	2	Bulk Produce	Standard	3	60	47	26	49

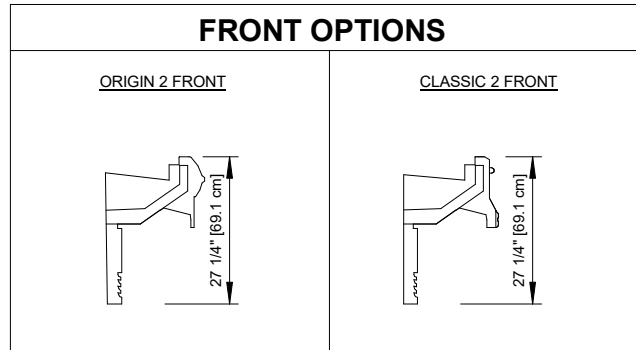


ALL MEASUREMENTS ARE TAKEN PER ASHRAE-72-2005 SPECIFICATIONS. HILLPHOENIX REFRIGERATED DISPLAY CASES FOR SALE IN THE UNITED STATES MEET OR EXCEED DEPARTMENT OF ENERGY 2017 REQUIREMENTS.

**ONIP**

Rev. Date	Rev. #	Rev. Title
9-26-19	3	DATA UPDATE
7-19-18	2	NEW STANDARDS

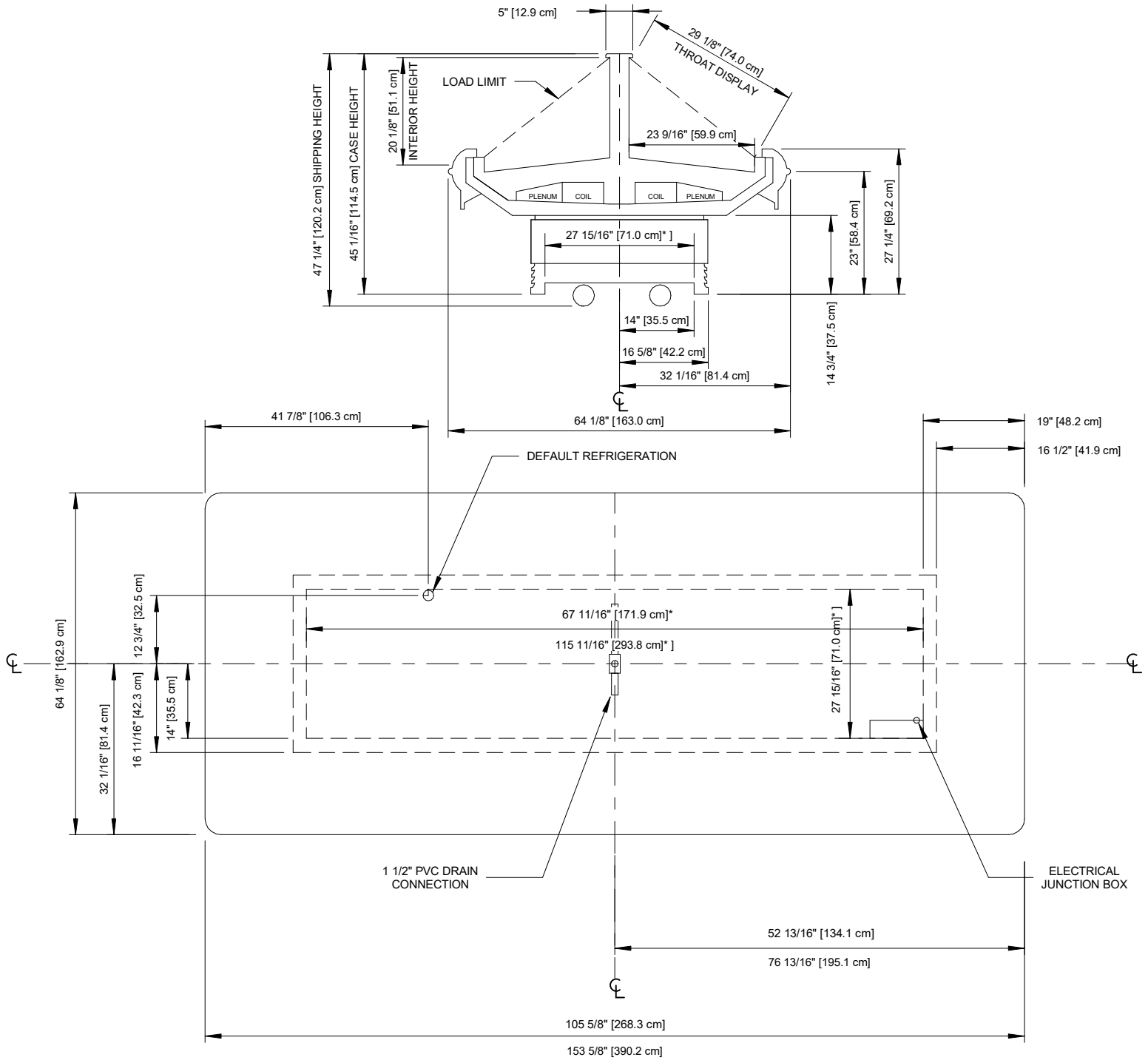




ALL MEASUREMENTS ARE TAKEN PER ASHRAE-72-2005 SPECIFICATIONS. HILLPHOENIX REFRIGERATED DISPLAY CASES FOR SALE IN THE UNITED STATES MEET OR EXCEED DEPARTMENT OF ENERGY 2017 REQUIREMENTS.

## ONIP

Rev. Date	Rev. #	Rev. Title
9-26-19	3	DATA UPDATE
7-19-18	2	NEW STANDARDS



**NOTES**

\* : STUB-UP AREA

- Front and overall case height vary with base frame height.



ALL MEASUREMENTS ARE TAKEN PER ASHRAE-72-2005 SPECIFICATIONS. HILLPHOENIX REFRIGERATED DISPLAY CASES FOR SALE IN THE UNITED STATES MEET OR EXCEED DEPARTMENT OF ENERGY 2017 REQUIREMENTS.

**ONIP**

Rev. Date	Rev. #	Rev. Title
9-26-19	3	DATA UPDATE
7-19-18	2	NEW STANDARDS

