

ONRS5DM Narrow Multi-Deck Reach-In Deli / Meat Merchandiser

4', 8' & 12' (Beverage / Dairy / Deli / Meat)

Electrical Data

Case Length	Fans Per Case	High-Efficiency Fans		Defrost Heaters			
		120 Volts		208 Volts		240 Volts	
		Amps	Watts	Amps	Watts	Amps	Watts
4'	2	0.15	18	1.92	400	2.22	533
8'	3	0.46	28	3.85	800	4.44	1065
12'	4	0.61	37	5.77	1200	6.67	1600

Lighting Data

Case Length	Optimax ¹ Pro LED	
	120 Volts	
	Amps	Watts ²
4'	0.20	24
8'	0.39	47
12'	0.58	70

Anti-Condensate Heater Data

Doors	Vista - C		Anthony 101B (NT)	
	120 Volts		120 Volts	
	Amps	Watts	Amps	Watts
4'	0.67	80	1.33	160
8'	1.17	120	1.49	204
12'	1.56	165	1.94	233

Guidelines & Control Settings

Application	BTUH/door		Superheat Set Point @ Bulb (°F)	Evaporator (°F)	Discharge Air (°F)	Discharge ³ Air Velocity (FPM)
	Conventional	Parallel				
Beverage	439	415	6 - 8	34	38	380
Dairy / Deli	465	439	6 - 8	32	36	380
Meat	520	491	6 - 8	28	32	380

Defrost Controls

Defrosts Per Day	Run-Off Time (min)	Electric Defrost		Timed-Off Defrost		Hot Gas Defrost		Reverse Air Defrost	
		Fail-Safe (min)	Termination Temp (°F)	Fail-Safe (min)	Termination Temp (°F)	Fail-Safe (min)	Termination Temp (°F)	Fail-Safe (min)	Termination Temp (°F)
4 ⁴	6 - 8	30	47	30	40	24	47	-- ⁵	---

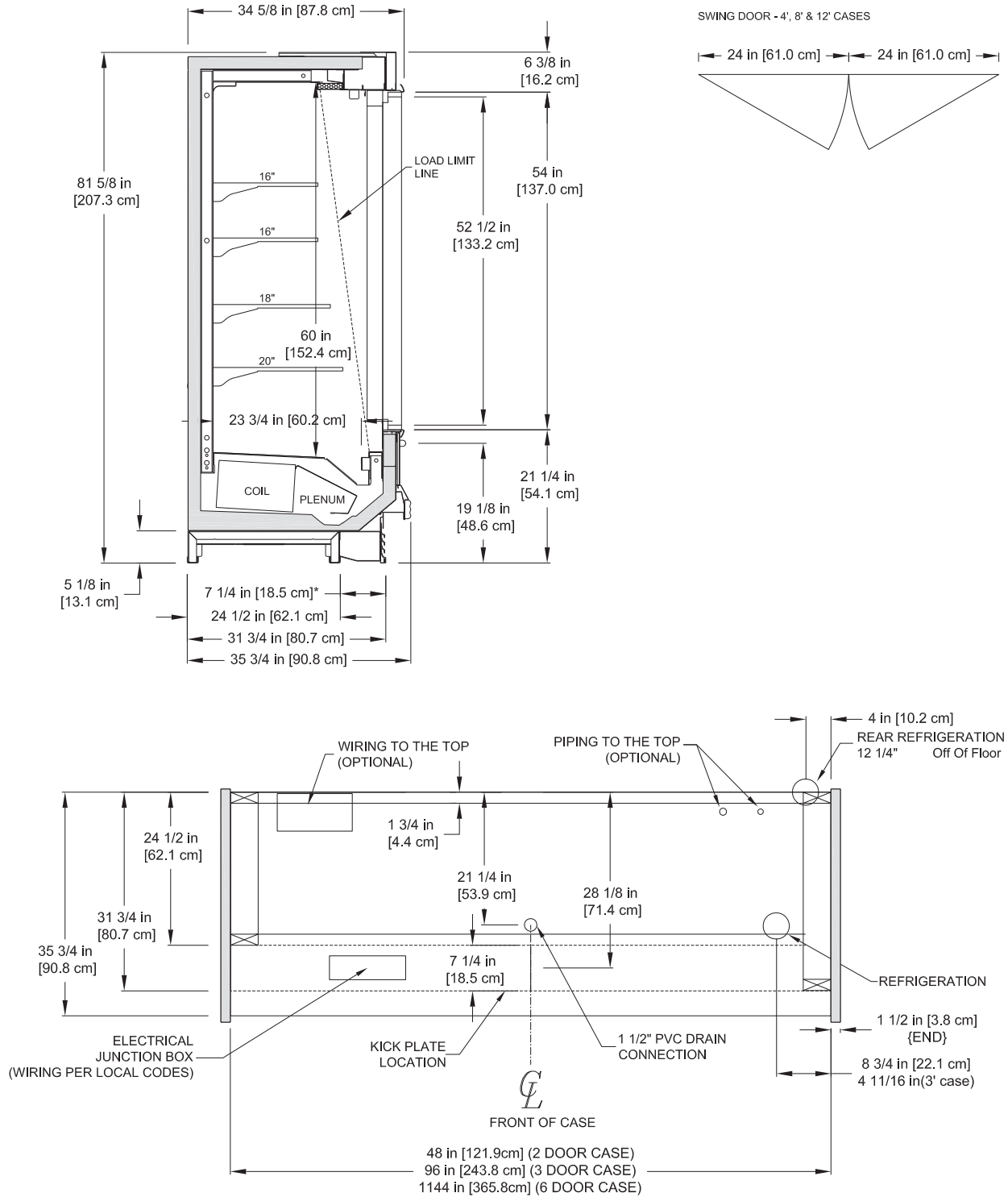
- Horizontal lighting is included.
- Low-power lights. High-power option available.
- Average discharge air velocity at peak of defrost.
- If Timed-Off defrost is utilized. If Electric or Hot Gas are utilized, the case only requires 1 defrost per day.
- NOTE: "--" indicates that feature is not an option on this case model.



Medium Temperature Defrost Schedule	
Defrost per Day	Time
1	12 midnight
2	12am - 12pm
3	6am - 2pm - 10pm
4	12am - 6am - 12pm - 6pm

ONRS5DM Narrow Multi-Deck Reach-In Deli / Meat Merchandiser

4', 8' & 12' (Beverage / Dairy / Deli / Meat)



NOTES:

* :STUB-UP AREA

** :RECOMMENDED STUB-UP CENTERLINE FOR ELECTRICAL AND HUB DRAINS

- FRONT AND REAR SILL HEIGHTS VARY WITH BASE FRAME HEIGHT
- ENDS ADD APPROXIMATELY 1 INCH TO CASE HEIGHT, 1 INCH TO THE FRONT AND 1/2 INCH TO THE BACK
- A 2" MINIMUM AIR GAP IS REQUIRED BETWEEN THE REAR OF THE CASE AND A WALL
- WIRING-TO-THE-TOP ADDS APPROXIMATELY 4 INCHES TO CASE HEIGHT
- AVAILABLE SHELF SIZES: 10", 12", 14", 16", 18", 20", 22" & 24"
- DASHED LINES SIGNIFY AREA INSIDE BASE RAIL BEHIND KICK PLATE
- BACK PANELS ADD APPROXIMATELY 1" TO THE REAR OF THE CASE

