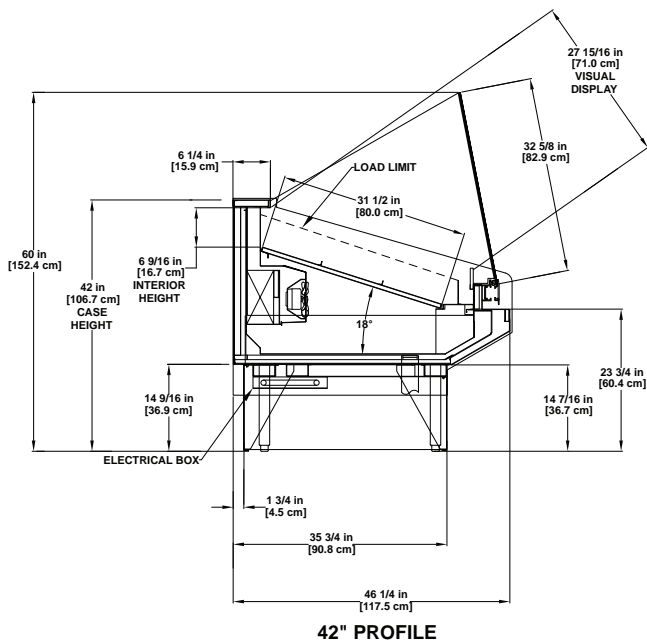


Service Single-Deck

Refrigerated merchandiser for seafood.





Please consult Hillphoenix Engineering Reference Manual for dimensions, plan views and technical specifications. Specifications subject to change without notice. Designed for optimal performance in store environments where temperature and humidity do not exceed 75° F and 55% R.H. Certified to UL 471 and ANSI/NSF Standard 7.

Base Model Features

- Bullet leg base with adjustable height toe kick.
- Standard 42" H rear ledge and 46-1/4" D.
- 14-7/16" H painted metal base, front and sides.
- 60-degree front dieboard.
- Painted metal exterior.
- Stainless steel base trim, front, sides, & rear.
- Stainless steel exterior trim.
- Stainless steel outside back and case top.
- 6-1/4" D stainless steel, rear work ledge — no overhang.
- Open back.
- Single-pane, regular glare angled glass with swing glass hardware.
- 3-1/2" removable dieboard plexi mounted behind front glass.
- Ice application ONLY.
- Stainless steel interior and trim.
- Fixed 18° angle cleated, insulated stainless steel ice deck.
- 4" stainless steel bottom deck product stop.
- Stainless steel drain pan with drain screens.
- Energy-efficient fans.
- Solar digital thermometer.
- Rear electrical raceway location.
- Remote DX refrigeration package.

Available Options

- Available lengths: 4', 6', 8', 10' and 12'.
- Alternate 15-15/16" H toekick height: overall rear ledge height at 43-1/2" H.
- Inlet and outlet options.
- Flat front profile.
- Sled runner base construction.
- Pedestal base or false pedestal base.
- Exterior finishes: exterior grade laminate or stainless steel.
- Poly, solid surface, or stone rear ledge.
- Non-glare front glass.
- Single-pane, regular glare vertical glass with swing hardware.
- Single-pane, regular glare curved glass with swing hardware.
- Humidification system (increases overall rear ledge height by 4" for housing).
- Flush system.
- Adjustable scale stand.
- Rear flip-up work boards (fixed or flip-up) in poly, stainless steel, or solid surface.
- Paper cutters.
- ISO outlet/CON outlets (specify vertical or horizontal placement on rear).
- Yellow safety steps.
- Full height 1/2" plex side returns on the interior of end panel to match the front glass angle with mirror-polished, stainless steel interior.
- Thermal divider.
- Cart bumper mounted on the front panel of the case.
- Cart bumper added to end panels.
- Front electrical raceway.
- Remote glycol or CO₂ refrigeration packages.



Conyers, GA 30013
770.285.3264
hillphoenix.com

Hillphoenix

©2024 Hillphoenix, Inc.
All rights reserved.

S01_BSD-SW_v1224