

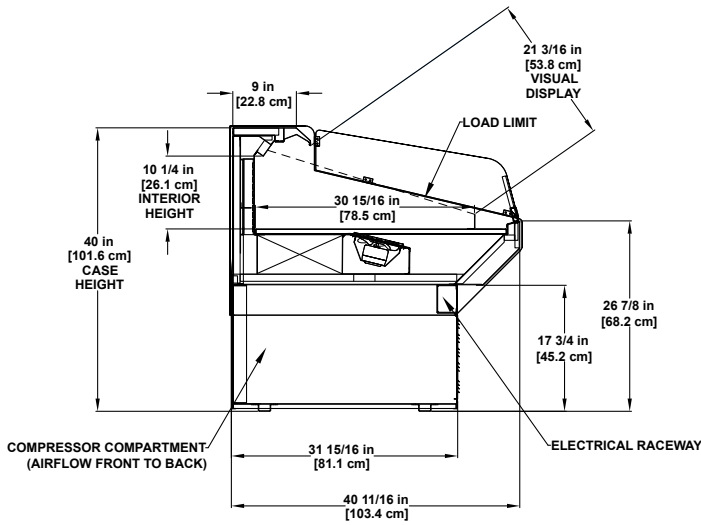
Self-contained Merchandisers

Refrigerated mobile merchandiser for bakery, beverage, deli, meat and produce.



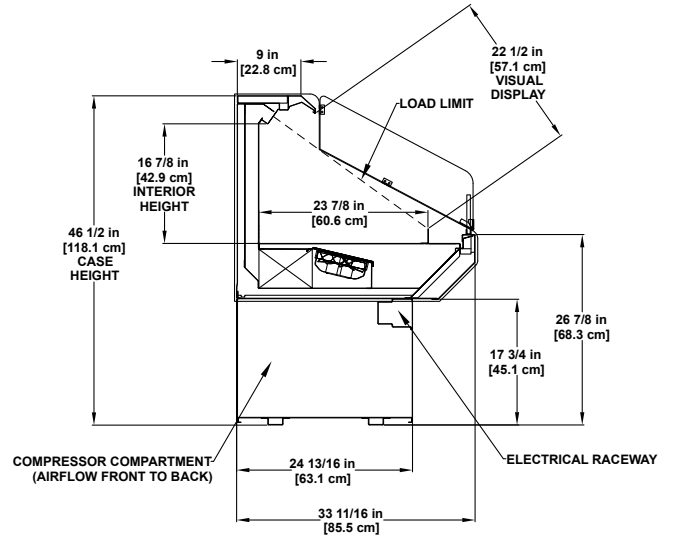
Photo may depict options not included on standard models.

HS Series Self Contained
Self-Service Single-Deck



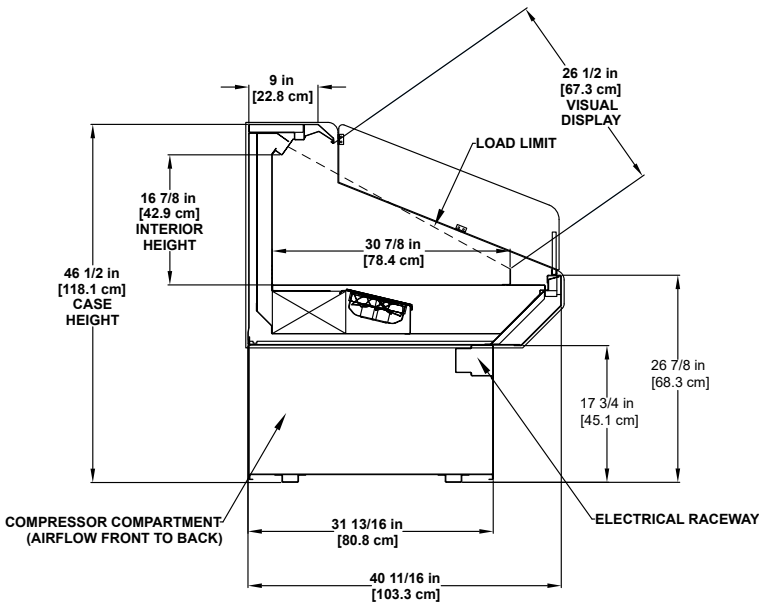
40"H x 40-11/16"D

Refrigerated Single-deck Display / Closed Base



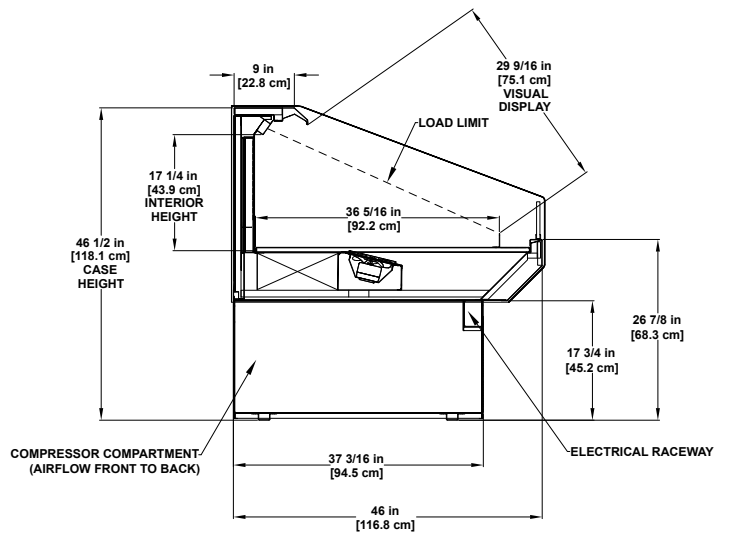
46-1/2"H x 33-11/16"D

Refrigerated Single-deck Display / Closed Base



46-1/2"H x 40-11/16"D

Refrigerated Single-deck Display / Closed Base



46-1/2"H x 46"D

Refrigerated Single-deck Display / Closed Base

Please consult Hillphoenix Engineering Reference Manual for dimensions, plan views and technical specifications. Specifications subject to change without notice. Designed

for optimal performance in store environments where temperature and humidity do not exceed 75° F and 55% R.H. Certified to UL 471 and ANSI/NSF Standard 7.



R-290 models are listed for NSF Type 1



Closed base design with exposed casters and MMRA style dry shelving above the case.



Open base design with exposed casters.

Height	Depth	Length				
		2'	3'	4'	6'	8'
40"	40-11/16"	■	■	■	■	■
46-1/2"	33-11/16"	■	■	■	■	■
	40-11/16"	■	■	■	■	■
	46"	■	■	■	■	■

■ R-290 Refrigerant
 ■ R-404a/R-448a Refrigerant
 ■ Not available.



Second Nature® NATURAL environmentally friendly R-290 hydrocarbon refrigerant has an ozone depletion potential (ODP) of zero (0) and a global warming potential of three (3).

Base Model Features

- Sled runner base construction.
- Closed base.
- 17-3/4”H painted metal base, front, and sides.
- Outside back unfinished galvaneal.
- 9”D case top painted to match the exterior.
- Painted metal exterior and trim.
- 5-1/2”H x 1/2” thick polished, straight die board plex.
- Painted metal interior and trim.
- Painted metal, fixed, flat bottom deck with angled telescoping wire rack.
- Left and right solid end panels.
- Energy efficient fans.
- Solar digital thermometer.
- Front electrical raceway location.
- R-290 refrigeration package.
- R-404a & R-448a on select 6’ and 8’ case lengths only.
- Front-to-back: straight path with rear lower exhaust.

Available Options

- See case lengths on the chart below.
- Sled runner base construction with leveling pads.
- Recessed or exposed casters.
- Open base (on models greater than 2’).
- Stainless steel or wood slat base finish (closed base only).
- Exterior finishes: exterior grade laminate or stainless steel.
- Exterior back panel: painted metal or stainless.
- 9” D case top: solid surface, butcher block, laminate, poly, or stone finish.
- Interior finish: stainless steel.
- Clearvoyant® LED top light.
- Separate on/off light switch.
- (1) row 10”D adjustable painted metal shelf.
- Shelf options: flat or angled, lighted, product stops, and price tag molding.
- 2 Step riser (base deck, 1-1/2”H, and 3”H steps).
- Dry shelves above case: up to three rows 10-18”D adjustable-angled wire shelves with wire product stop (MMRA style upper shelf).
- Night cover: roller shade or polycarbonate panel.
- Full-view, partial-view end panels or thermal divider.
- Cart bumper mounted on the front panel of the case: single or dual row.
- Cart bumper added to end panels.
- 6’ UL cord and plug.
- Rear 2” chimney exhaust front-to-back airflow.
- Back to front airflow exhaust.

Hillphoenix[®]

2016 Gees Mill Road
Conyers, GA 30013
770-285-3264

www.hillphoenix.com