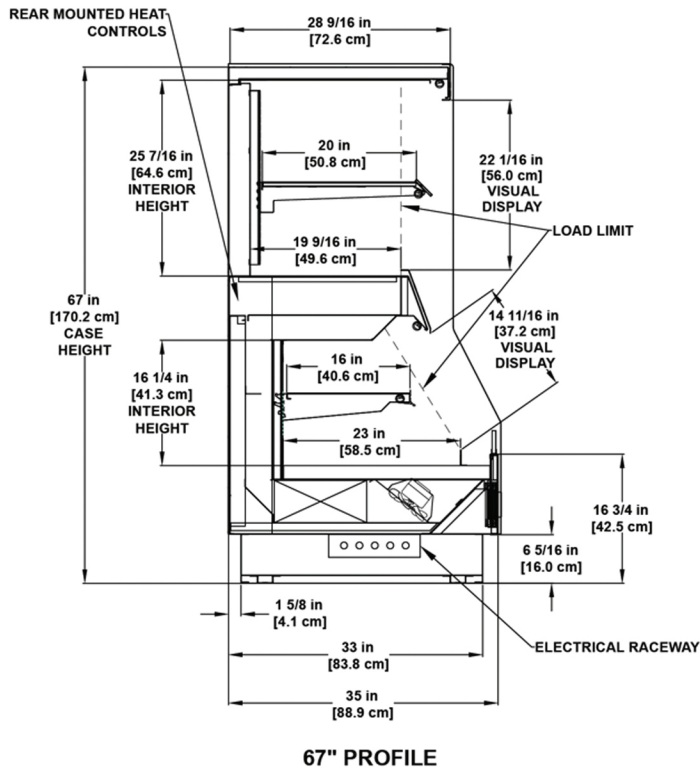


# Self-Service Multi-Deck

Hot/cold combination merchandiser.





Please consult Hillphoenix Engineering Reference Manual for dimensions, plan views and technical specifications. Specifications subject to change without notice. Designed for optimal performance in store environments where temperature and humidity do not exceed 75° F and 55% R.H. Certified to UL 471 and ANSI/NSF Standard 4 and 7.

## Base Model Features

- Sled runner base construction.
- Case dimensions: 67"H & 35"D.
- 6-5/16"H stainless steel toekick, front and sides.
- 45 degree front dieboard.
- Painted metal exterior.
- Stainless steel base trim, front, sides & rear.
- Stainless steel interior.

## Hot Self-service Top

- Stainless heated merchandising deck.
- One heated 20" stainless steel shelf.
- Adhesive heat components located in the bottom deck and shelf.
- Low wattage, long wave radiant heat system.
- Electronically controlled zone heating with Bluetooth connectivity
- Controls for shelving heat and base mounted on outside back.
- 2" dial thermometer.
- Hard wire power connection.
- 120/208-3-60

## Refrigerated Base

- 3-1/2"H x 1/2" thick polished, straight die board plex.
- Painted matte black metal interior and trim.
- (1) row Clearvoyant® LED top light.
- (1) row 20" non-lighted adjustable flat black painted metal shelving with black price tag molding.
- Painted black metal, flat bottom deck with 2" metal product stop.
- On/off light switch.
- Energy-efficient fans.
- Solar digital thermometer.
- Rear electrical raceway.
- Remote DX refrigeration package.

## Available Options

- Available width: 4' and 6'.
- Alternate kickplate height of 7-13/16"H with no change to case height.
- Alternate case height: 74" with (2) rows shelving.
- Flat front profile.
- Bullet leg base with adjustable height toekick.
- Pedestal base or false pedestal base.
- Exterior finishes: exterior grade laminate or stainless steel.
- Interior refrigerated base finishes: painted white or stainless steel.
- Sliding rear load doors in hot section only.
- Solid or full-view end panels with mirror-polished, stainless steel interior.
- Econofrost night cover with or without cassette, polycarbonate, or magnetic night cover on the refrigerated base.
- Cart bumper mounted on front panel of the case.
- Cart bumper added to end panels.
- Front electrical raceway.
- Refrigeration: Remote glycol or CO<sub>2</sub> packages.



Dover Food Retail  
Conyers, GA USA  
770.285.3264  
hillphoenix.com

©2023 Hillphoenix, Inc.  
All rights reserved.

**Hillphoenix**