

Glass Door Reach-In Self-Contained

Medium and low-temperature merchandisers for beverage, produce, bakery, dairy, deli, meat, seafood, frozen food and ice cream.



CLARITY® reach-in merchandisers

customized with the ideal frame
and door options deliver superior
performance for every need.

Multiple sizes and configurations
help store merchandisers provide
unique refrigeration options
and enhanced product displays
to create a superior shopper
experience.

CLARITY®
Reach-In Merchandisers from Hillphoenix

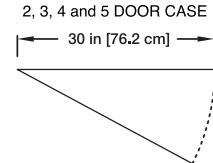




Hillphoenix® is committed to continually raising the bar for quality and innovation. Acculine™ is a new production line assembly process developed by Hillphoenix to raise the standard for achieving precise fit and finish in its refrigerated door cases.

Acculine is a new, proven production line assembly process developed by Hillphoenix to raise the standard for achieving precise fit and finish in its refrigerated door cases. This automated line eliminates the variables and production interruptions of traditional hand-assembly by aiding assemblers with the addition of state-of-the-art computer programming and advanced robotics in the company's first automated production line.

STANDARD SWING DOOR
2, 3, 4 and 5 DOOR CASE



Interior Color Options

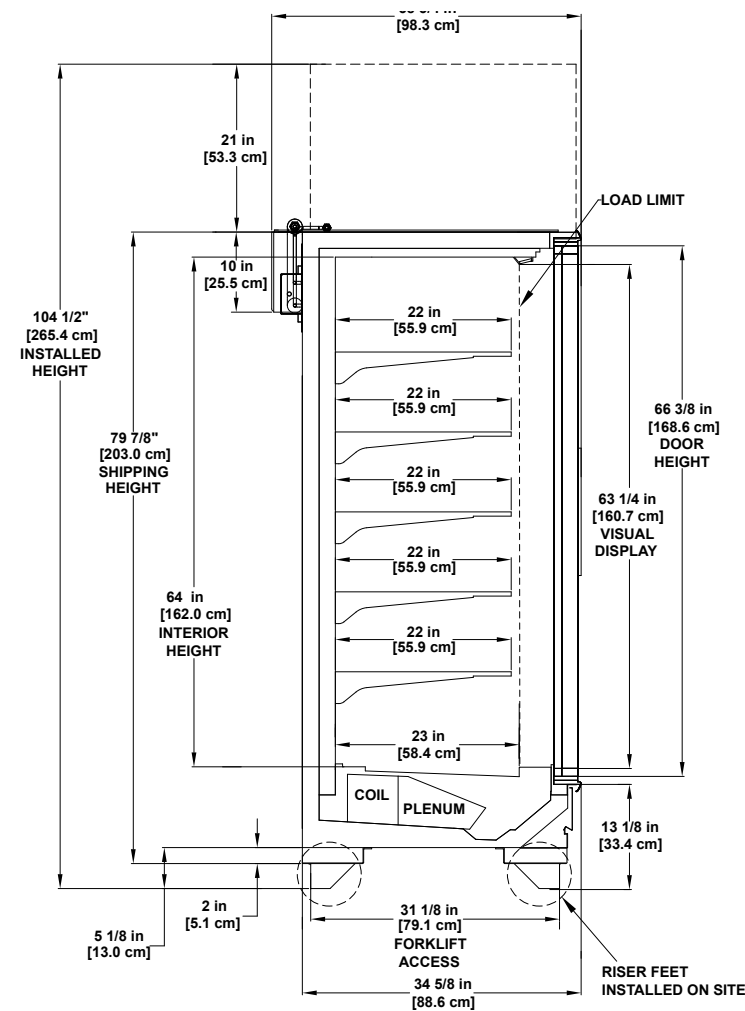


Matte Black

Appliance White



JNRZ(B)HSA



Please consult Hillphoenix Engineering Reference Manual for dimensions, plan views and technical specifications. Specifications subject to change without notice. Designed for optimal performance in store environments where temperature and humidity do not exceed 75° F and 55% R.H. Certified to UL 471 and ANSI/NSF Standard 7.

Base Model Features

- Acculine automated production process achieves precise fit and finishes in J Series reach-in cases.
- Precisely cut interlocking panels and drilled egresses result in a more consistent case that results in a better case-to-case alignment.
- Field-installed condensing units ship with minimal assembly required and incorporate a special base frame option allowing it to fit through an 80" door. And a loading dock is not required because the design incorporates a special low base on wheels and a condensing unit that is installed on-site.
- Top wiring with quick-connect electrical harnesses results in faster and accurate connections during installation.
- 64" interior front facings enhance planogram design options with added flexibility and versatility.

- Bottom-mounted refrigeration components facilitate serviceability and allow for full top-shelf merchandising.
- The modular interior component design allows easy access to the coil, fans, and drain for ease of maintenance.
- Proprietary Synerg-E® technology that enables energy efficiency and lower average product temperatures.
- Seamless lineups of low, and medium-temperature cases for consistency in store design.

Standard Configuration

- Anthony black ELM D doors.
- Mechanical TX valves.
- Vented black painted metal kick plate.
- 5 rows of 22" shelves with PVC tag molding.
- Square ends with polymer end trim.
- Flat front with 1" bumper.
- Top piping.
- Off-time defrost on medium-temperature.
- Electric defrost on low-temperature.
- Electrical requires 208V, 4-wire service.
- Controllers for temperature and defrost management.
- 21" fascia.
- Shipped loose evaporator pan & condensate pump.

Available Options

- Available lengths: 2, 3, 4 & 5 doors with 30" standard swing.
- Interior color: appliance white or matte black.
- Exterior color: appliance white, matte & gloss black, textured gray, white knight, bengal silver, antique silver vein, champagne beige, hardwood black, french vanilla, bronze age 2, bleach sand, silver spice, matte steel gray, and silver metallic..
- Available standard swing doors: Anthony® Infinity 90®, or ELM D doors in polished aluminum or black.
- 101 Frame for medium-temperature applications.
- 101 LE frame with door rail heat for low-temperature applications.
- Partitions and non-insulated dividers.
- Motion sensors for additional energy savings.
- Storm gray PVC kick plate.
- 20" shelf option with PVC tag molding for maximum display capacity.
- Anti-condensate controls for low-temperature cases.
- Other Versions: remote JNRBH and JNRZH.



Hillphoenix[®]

2016 Gees Mill Road
Conyers, GA 30013
770.285.3264
www.hillphoenix.com

©2023 Hillphoenix, Inc.
All rights reserved.