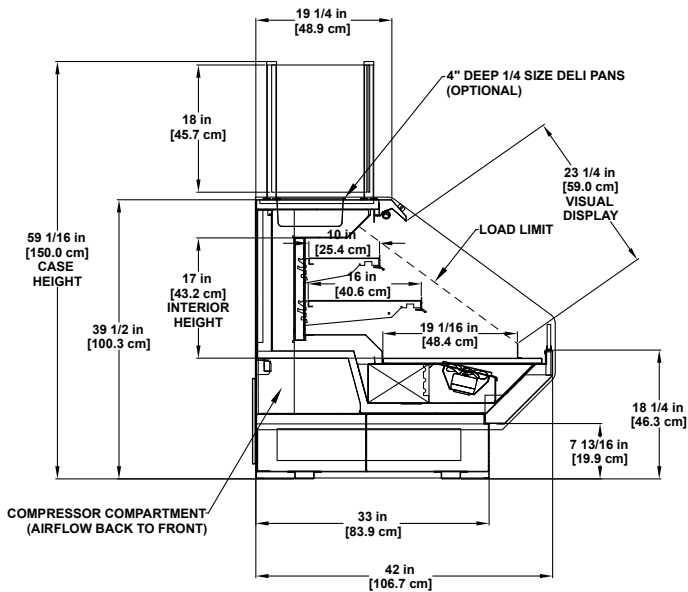


Self-Service Multi-Deck

Self-contained refrigerated merchandiser for bakery, beverage, cheese, deli and produce.





Please consult Hillphoenix Engineering Reference Manual for dimensions, plan views and technical specifications. Specifications subject to change without notice. Designed for optimal performance in store environments where temperature and humidity do not exceed 80° F and 55% R.H. Certified to UL 471 and ANSI/NSF Standard 7.

Base Model Features

- Sled runner base construction.
- Case dimensions: 39-1/2"H and 42"D.
- 7-13/16"H stainless steel toekick, front and sides.
- Painted metal exterior.
- Stainless steel outside back.
- Stainless steel exterior trim.
- 45 degree front dieboard.
- 3-1/2"H x 1/2" thick polished, straight die board plex.
- 19-1/4"D stainless steel refrigerated condiment rail accommodating 1/4 x 4"D deli pans (front to back orientation).
- 18"H grooved bistro post food guard with regular glare glass.
- Painted matte black metal interior and trim.
- (1) row Clearvoyant® LED top light.
- (1) rows each 10" and 16" non-lighted adjustable flat black painted metal shelving with black price tag molding.
- Painted black metal, flat bottom deck with 2" metal product stop.
- Main power and on/off light switch.
- Energy efficient fans.
- Solar digital thermometer.
- Back to front airflow.
- 6' Cord and plug.

Available Options

- Self-contained case lengths: 4' and 6'.
- No miters or wedges available.
- Bullet leg base with adjustable height toekick.
- Flat front profile.
- Exterior finishes: Exterior grade laminate or stainless steel..
- Painted metal base trim.
- Case top: Solid surface, poly, or stone.
- Condiment pans and lids.
- Food guard post styles: Tabbed or postless.
- Additional food guard options: glass shelf and glass side returns.
- Painted or stainless steel case interior.
- Clearvoyant LED under shelf lighting.
- Rear storage options: Dry open or dry closed with clear or solid doors.
- Solid or full-view end panels with mirror-polished, stainless steel interior.
- Thermal glass divider.
- Cart bumper mounted on front panel of case.
- Cart bumper added to end panels.
- Econofrost night cover with or without cassette.



This self-contained model utilizes Second Nature® NATURAL environmentally friendly R-290 hydrocarbon refrigerant that has zero (0) ozone depletion potential (ODP) and three (3) global warming potential.

Listed for NSF Type 2.

Case with no dry storage is listed NSF Type 1.
Case with optional dry storage is listed NSF Type 2.



Dover Food Retail
Conyers, GA USA
844.591.5937
hillphoenix.com

Hillphoenix

©2022 Hillphoenix, Inc.