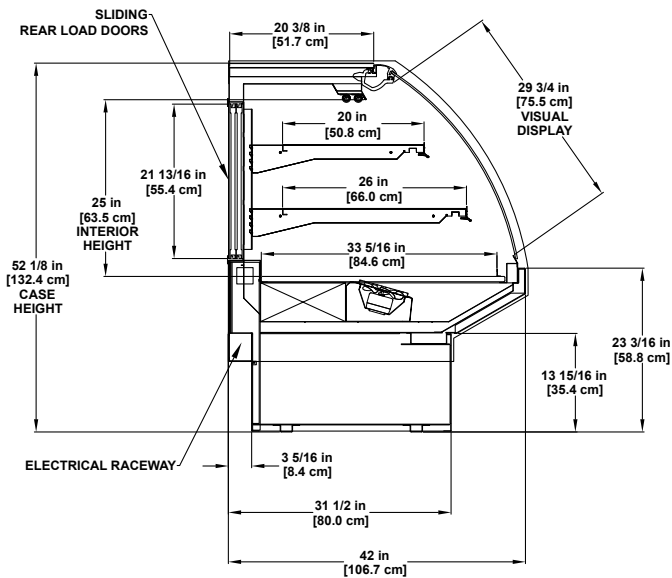


Service Multi-Deck

Refrigerated merchandiser for bakery application with curved or flat lift-glass.





Please consult Hillphoenix Engineering Reference Manual for dimensions, plan views and technical specifications. Specifications subject to change without notice. Designed for optimal performance in store environments where temperature and humidity do not exceed 75° F and 55% R.H. Certified to UL 471 and ANSI/NSF Standard 7.

Base Model Features

- Sled runner base construction.
- Straight back case design.
- Standard 52-1/8"H and 42"D.
- 13-15/16"H adjustable base painted metal to match exterior; front & sides.
- 60° front die board.
- Painted metal exterior.
- Stainless steel exterior trim.
- Outside back painted to match exterior.
- 20-7/8"D 3/8" thick glass case top.
- Reflective, sliding, rear load doors w/black frames.
- Single-pane, regular-glare curved lift front glass.
- Black painted metal interior.
- Interior trim to match interior.
- Black painted metal flat bottom merchandising deck.
- (1) row each 20" and 26" fixed flat, adjustable glass shelving.
- LED dual top lighting.
- Rear electrical raceway.
- Hard wire power connection.
- Energy efficient fans.
- Solar digital thermometer.

Available Options

- Available lengths: 4', 6', 8', 10' and 12'.
- Alternate toe kick height 15-15/16"H for an overall height of 53-15/16"H.
- Flat front profile.
- Bullet leg base with adjustable height toe kick.
- Pedestal base or false pedestal base.
- Solid surface, stone or stainless steel case top.
- Exterior standard grade laminate.
- Interior and exterior stainless steel finish.
- White or other painted metal interior finish.
- Stainless steel outside back finish.
- Stainless steel base trim.
- Recess in front toe kick (gives illusion of a second/shorter toe).
- Cart bumper (1" or 2").
- Color accent band.
- Clear rear load doors.
- Gray frames.
- Single-pane, non-glare curved lift front glass.
- Single-pane, regular or non-glare flat lift front glass.
- Solid or dot matrix glass black or gray glass masking.
- Integrated case top scale stand (standard option- available on all lengths (not wedges) - customer left/center/right).
- Scale stands: Poly, stainless steel, solid surface or stone).
- Scale stand with dedicated circuit for ISO receptacle with optional pull wire(s).
- Adjustable scale stand (interior strut mount - 8' thru 12' only).
- Shelving: Wire (black, white, or chrome), painted metal or stainless steel.
- Price tag molding.
- Product stop on shelves.
- Rear (flip-up or fixed) work boards (Type: poly, stainless steel, solid surface).
- Paper cutters: Serrated or non-serrated.
- Front electrical raceway.
- ISO outlet/CON outlets or CAT5.
- Under shelf lights.
- Under shelf lights (LED lighting standard output).
- Alternative case thermometer.
- Refrigeration options: thermostat, solenoid, sensor, defrost timer, LLBV, EPR, controller, coated coil (consult factory).
- Solid interior painted, solid interior mirror polish stainless steel, thermal glass divider or glass ends.
- Painted end panel trim.



Dover Food Retail
Conyers, GA USA
844.591.5937
hillphoenix.com

Hillphoenix

©2020 Hillphoenix, Inc.