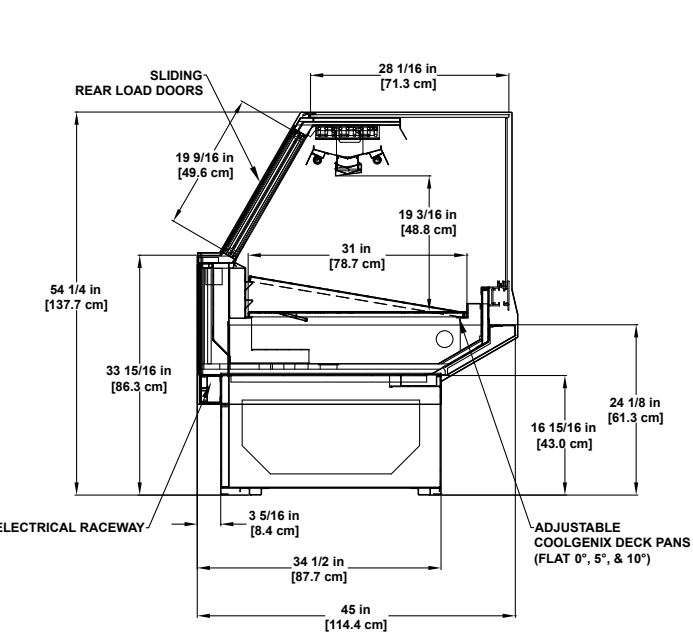


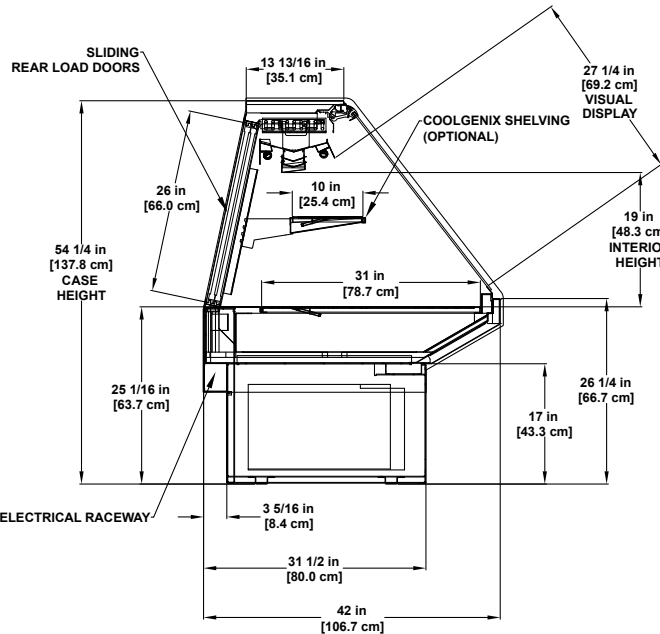
Seafood Cases

Refrigerated service and self-service displays.

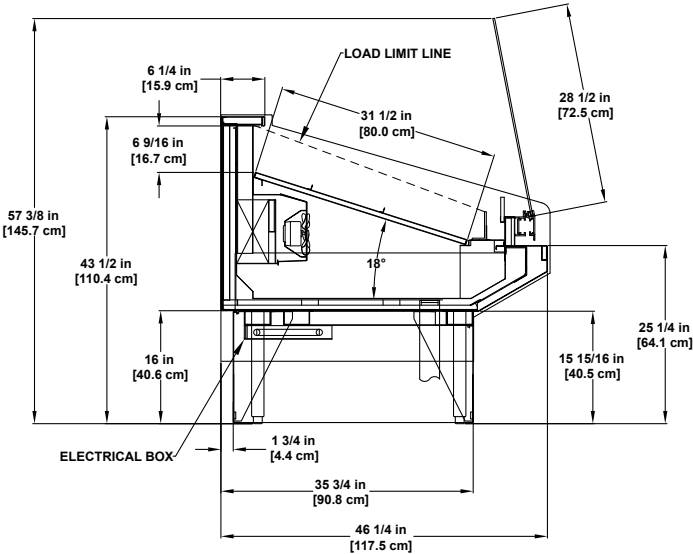




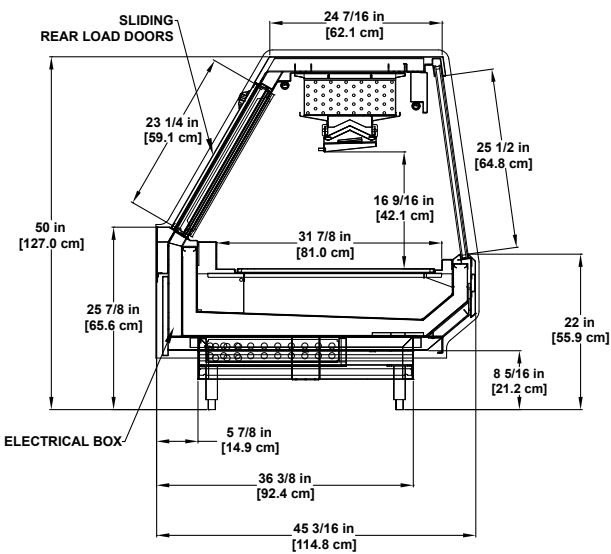
GMD-RGC | Refrigerated Multi-deck Display (Slide hardware)



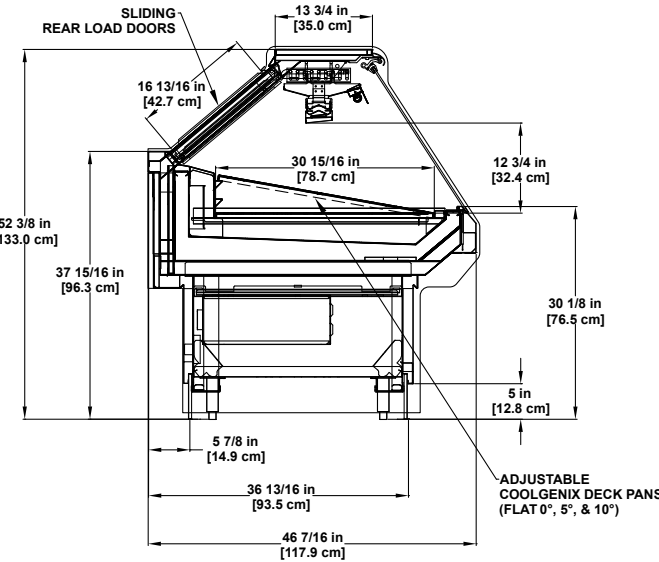
SMD-RGC | Refrigerated Multi-deck Display (Available in vertical glass option)



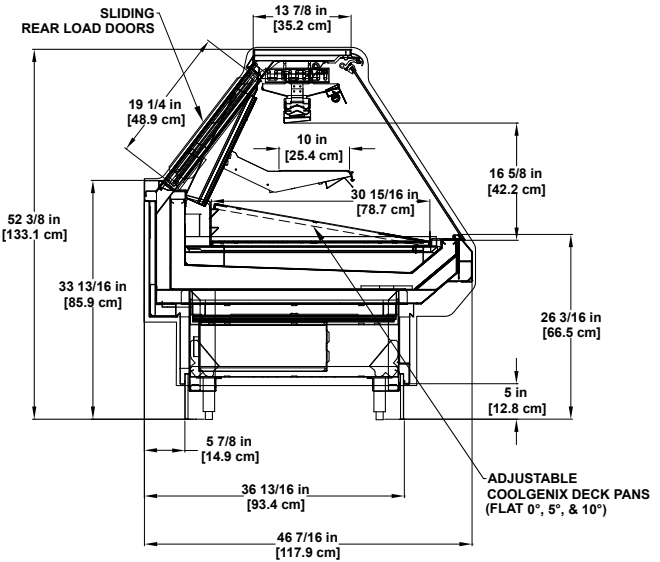
BSD-SW-R | Refrigerated Single-deck Display



SGM | Refrigerated Multi-deck Display (Available in 26" & 30" front glass options)



SSGC | Refrigerated Single-deck Display



*Shown with optional shelving.

S2SGC | Refrigerated Multi-deck Display



BSD-SW-R | Refrigerated Single-deck Display

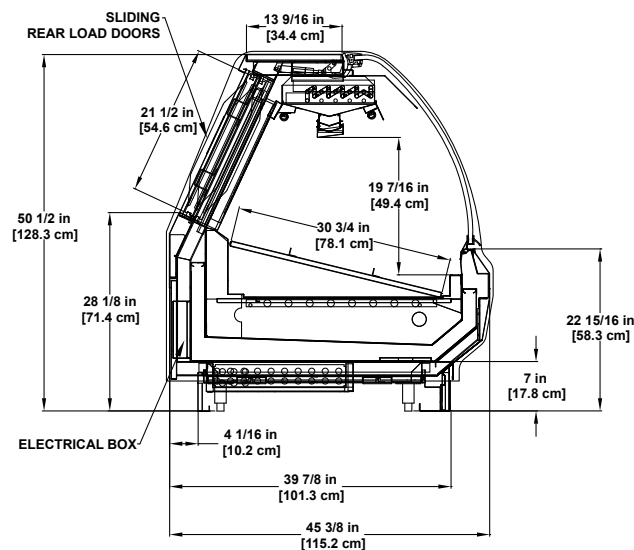


Please consult Hillphoenix Engineering Reference Manual for dimensions, plan views and technical specifications. Specifications are subject to change without notice.

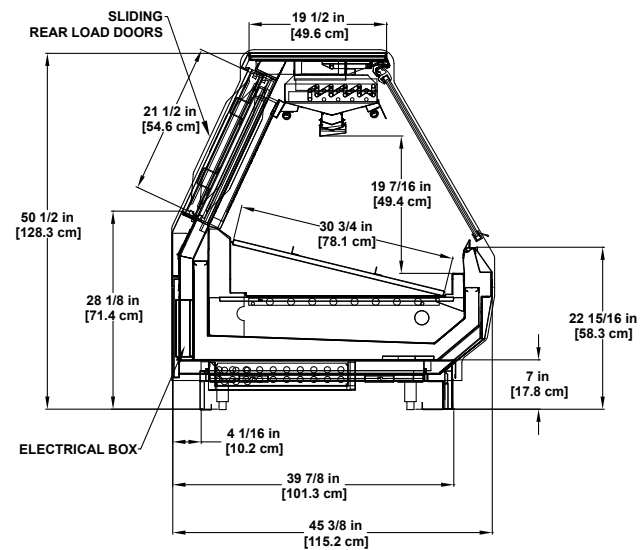
Designed for optimal performance in store environments where temperatures and humidity do not exceed 75°F and 55% R.H.



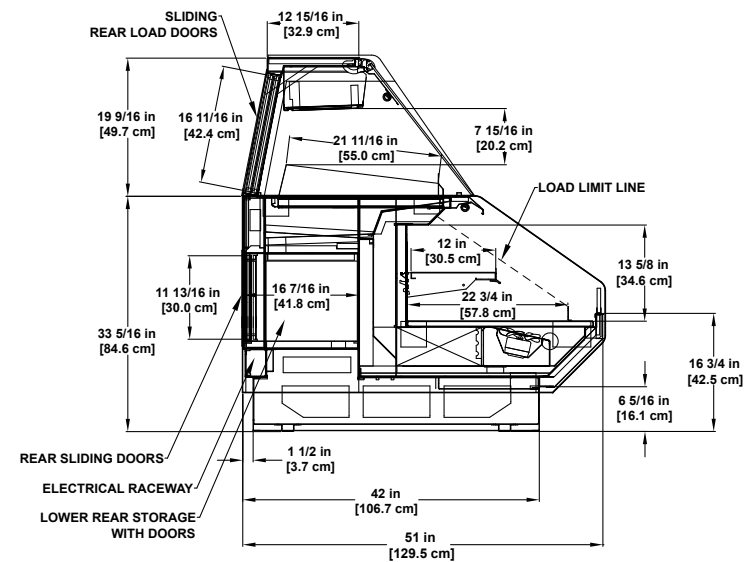
Seafood SERVICE



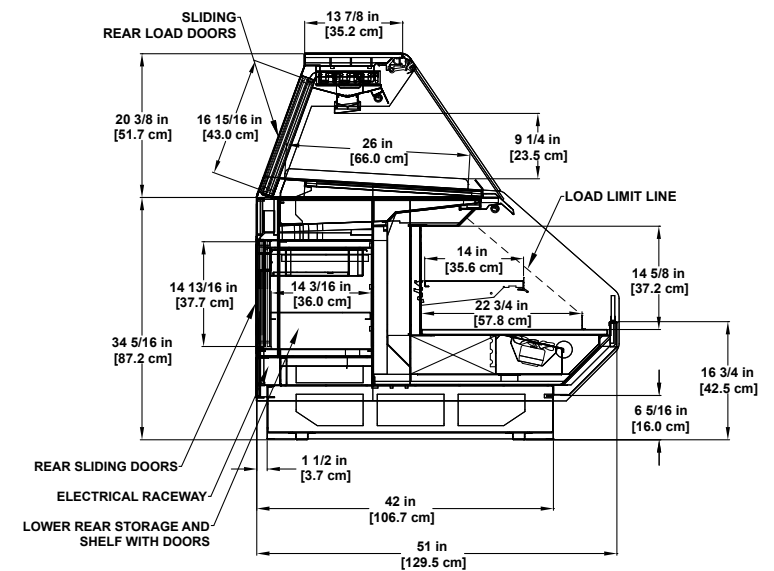
SSAS-RG | Refrigerated
Single-deck Display



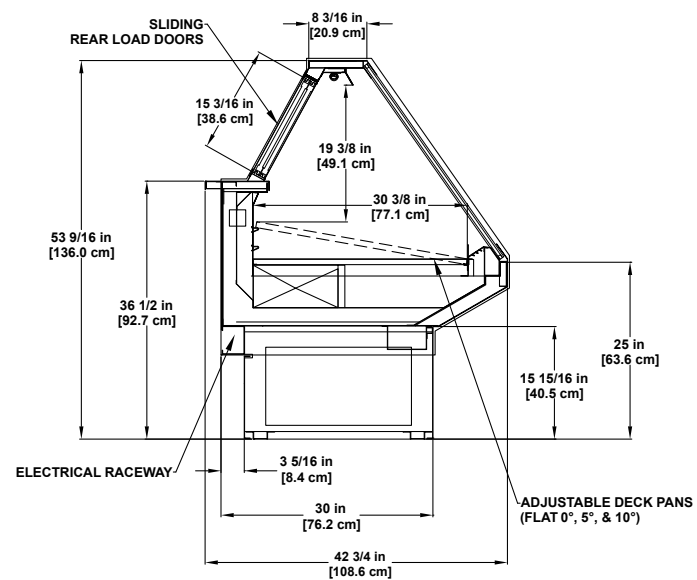
SSFS-RG | Refrigerated
Single-deck Display



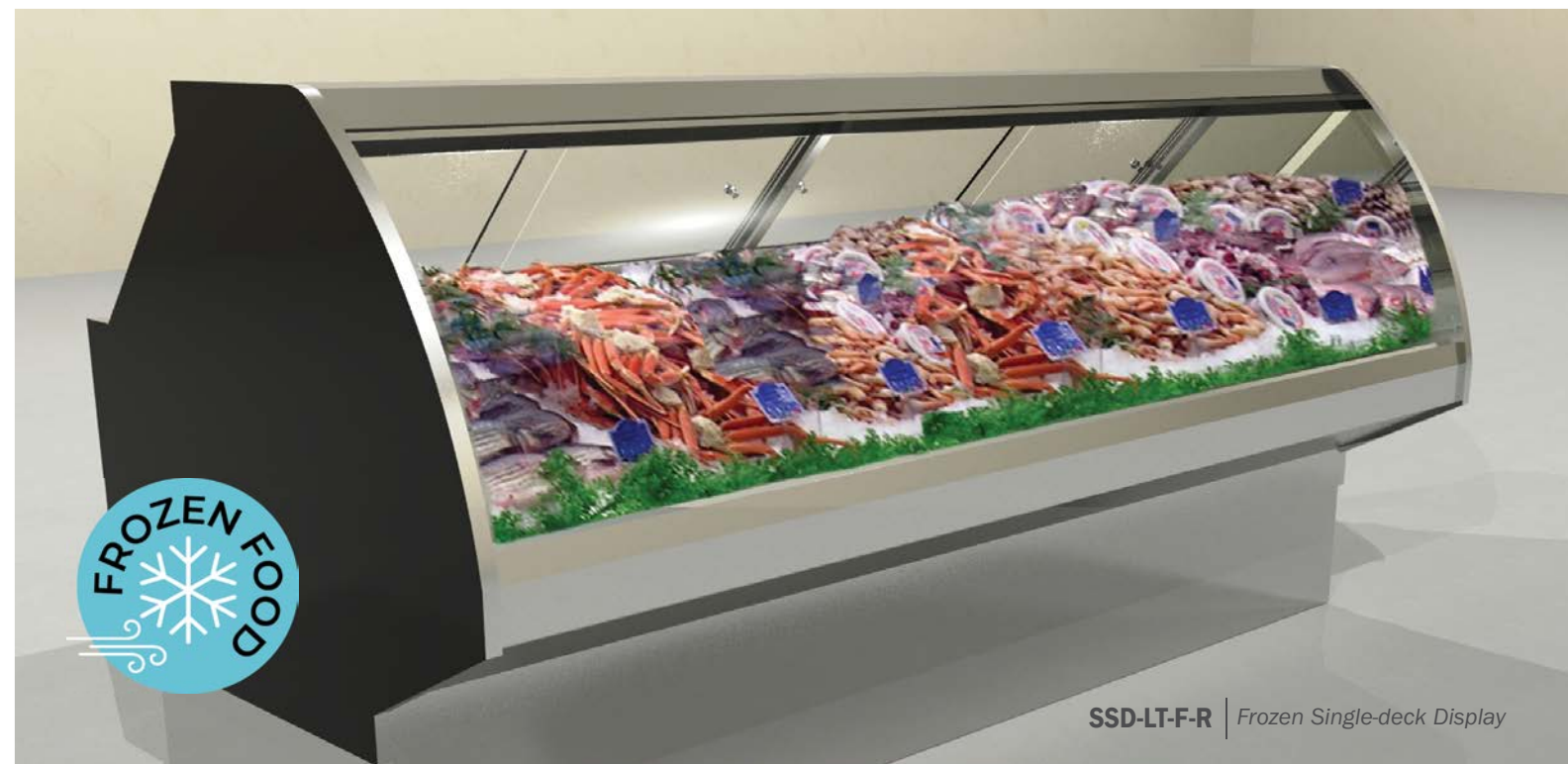
PTD-RG | Gravity Coil Dome Refrigerated Base



PTD-RGC | Coolgenix Dome Refrigerated Base
(Available in vertical glass option)



SSD-LT-F-R | Frozen Single-deck Display



SSD-LT-F-R | *Frozen Single-deck Display*

Catch
of the
Day

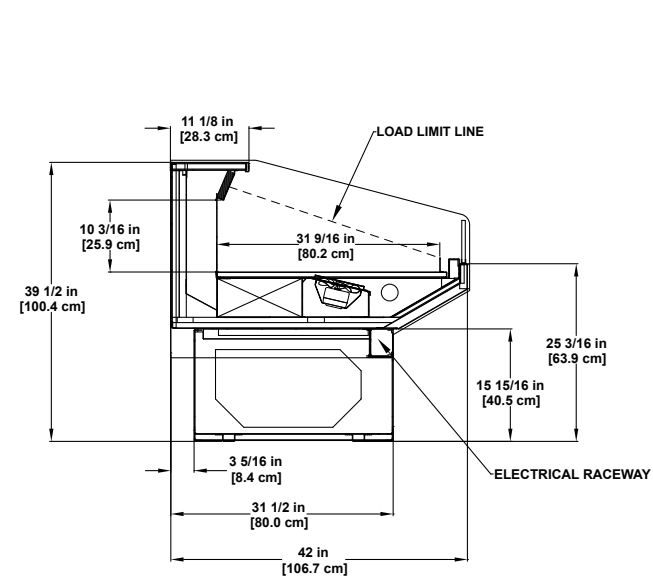
Please consult Hillphoenix Engineering Reference Manual for dimensions, plan views and technical specifications. Specifications are subject to change without notice.

Designed for optimal performance in store environments where temperatures and humidity do not exceed 75°F and 55% R.H.

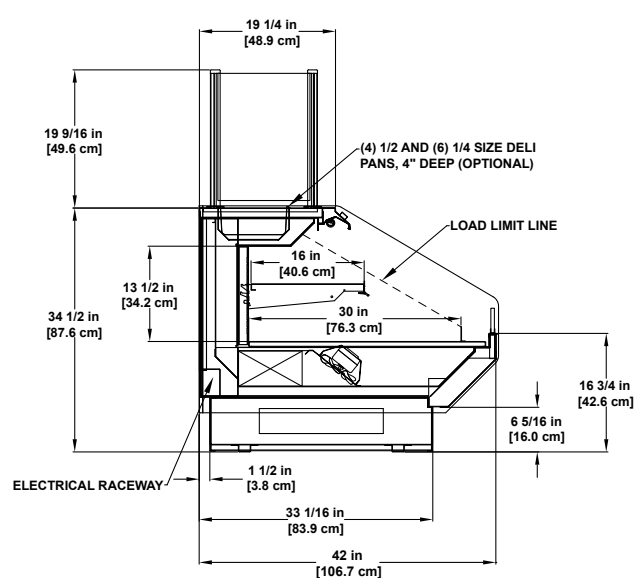


2017
DOE
COMPLIANT

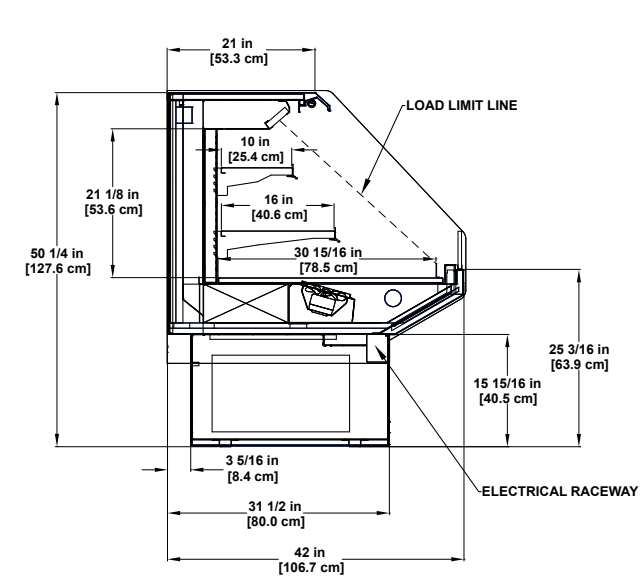
Seafood SELF-SERVICE



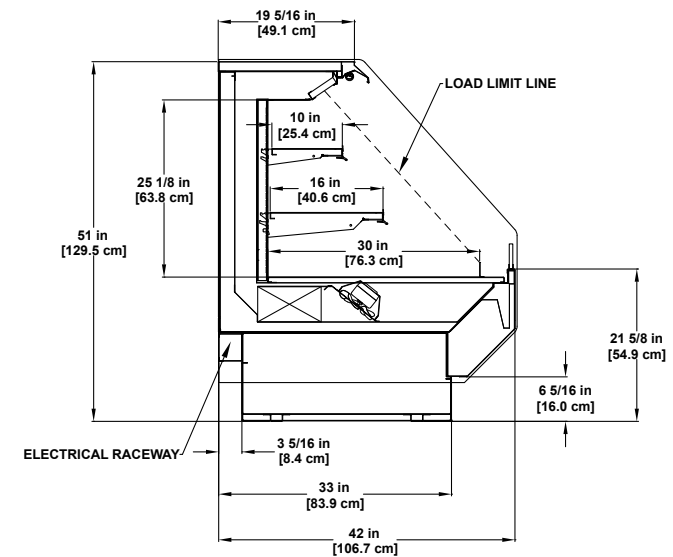
DLPC-R | Refrigerated Single-deck Display



PT-R | Refrigerated Multi-deck & Available with rear storage



DLPF-R | Refrigerated Multi-deck Display



PF-R | Refrigerated Multi-Deck Display



PF-R | Refrigerated Multi-deck Display



Please consult Hillphoenix Engineering Reference Manual for dimensions, plan views and technical specifications. Specifications are subject to change without notice.

Designed for optimal performance in store environments where temperatures and humidity do not exceed 75°F and 55% R.H.



Hillphoenix[®]

2016 Gees Mill Road
Conyers, GA 30013
770-285-3264
www.hillphoenix.com