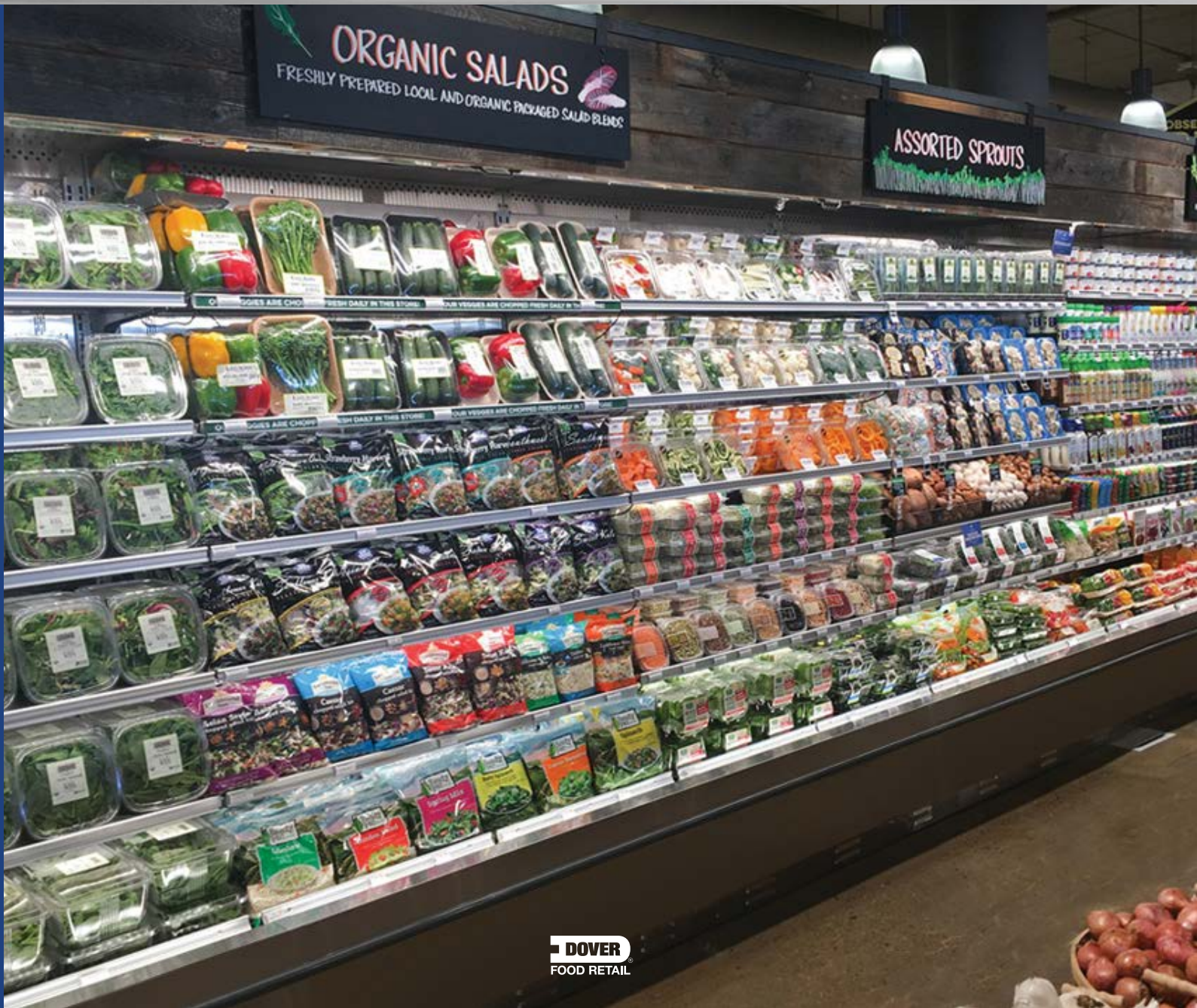


Shelves

Shelves for Low-Temp and Medium-Temp Merchandisers.



- LED Wire Management secures the wires below the shelf without interference to merchandise.
- Load rating increase on flat and angled shelves with the new bracket design allows increased merchandise load capacity and a closed stiffener improves shelf deflection regardless of shelf position.
- Positive shelf engagement with a lighter weight shelf for easier installation and new bracket features eliminate the false shelf standard engagement.
- Shelf front lip and tag molding designed for easier cleanability.



Plexi Product Stop O5DM Bakery.



Wire Product Stop O5M Meat.



Peg Shelves O5DM Deli.

Quick Guide

Shelf Name	"Load Rating Flat/Angled"	Angles	Lengths	Depths	Deflection Resistant	Tag Molding Plastic & Metal	LED Wire Management System	Stainless Steel
2 Position Shelves								
NSP Multi-Deck	250/250 lbs.	0°/17°	36", 48", 60"	*10"- 26", 27"	Included	All	✓	
NSP Reach-in Door Length	150/100 lbs.	0°/17°	30"	*18"- 26", 27"	Included	All	✓	
NSP Reach-in Door Length	250/250 lbs.	0°/17°	36", 48"	*18"- 26", 27"	Included	All	✓	
NSP Heavy Duty	50 sq. ft. /30 sq. ft.	0°/17°	30", 36", 48"	*16"- 24", 27"	Included	All	✓	✓
Origin2 Stainless Bright & Brushed	250/150 lbs.	0°/17°	30", 36", 48", 60"	*10"- 24"	Included	All	✓	✓
Multi-Position Shelves								
3 Position	250/150 lbs.	0°/17°/30°	36" & 48"	*12"- 24"		All	✓	
5 Position	250/150 lbs.	0°/17°/30°/34°/47°	36" & 48"	*12"- 24"		All	✓	
Specialty Shelves								
PEG	150 lbs.	n/a	30", 36", 48"	*12"- 24"		All		
Floral	250/150 lbs.	0°/17° or 0°/30°	30", 36", 48"	*14"- 22"		All	✓	
Wire Shelves	150/100 lbs.	0°/17°	30"	18", 22", 27"		*All		

* Shelf sizes available 12", 14", 16", 18", 20", 24", & 26". See technical reference sheet for shelf sizes available per model.
 * Wire shelves tag molding attaches with screws.

Shelves

Merchandising Options

- Shelf Fillers for airflow management when shelves are in an angled position
- Peg Hooks
- Shelf Dividers
- Shelf Baskets
- Product Stops
- Tag Molding

Product Stops	Overall Height	5"	3.5"	3.125"	2.5"	2.25"	2.125"
	Effective Height	3.75"	2.25"	1.875"	1.25"	1"	0.875"
Plexi	Clear	✓	✓	✓	✓	✓	✓
Wire	Black or White	✓	✓			✓	

Tag Moulding	Standard	Slotted Flat	Slotted Angled
Aluminum		✓	✓
PVC	✓	✓	✓

- Standard is for use with shelves in the flat position.
- Slotted Flat is for use with product stops with shelves in the flat or angled position.
- Slotted Angled is for use with product stops with shelves in the angled position.



Hillphoenix[®]

2016 Gees Mill Road
Conyers, GA 30013
770-285-3264

www.hillphoenix.com