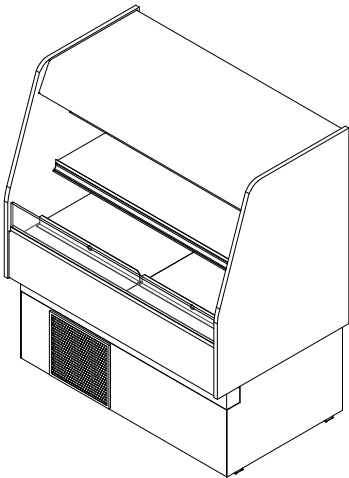




GENERAL NOTES:

- "----" Indicates that the feature is not an option on this case model and/or the data is not yet available at this time.



SHIPPING WEIGHT	
Case	Weight
CF-SC	---



CF-SC

Rev. Date	Rev. #	Rev. Title
03-15-23	1	NEW STANDARDS



ALL MEASUREMENTS ARE TAKEN PER ASHRAE-72 SPECIFICATIONS. HILLPHOENIX REFRIGERATED DISPLAY CASES FOR SALE IN THE UNITED STATES MEET OR EXCEED DEPARTMENT OF ENERGY 2017 REQUIREMENTS.

**SYSTEM REQUIREMENTS**

Case Height	Case Depth	Case Length	Volts	Phase	Total Amps	Minimum Circuit Ampacity	Maximum Overcurrent Protection
57 3/4"	30"	2'	120	1	4.8	5.8	15
57 3/4"	30"	3'	120	1	7.3	8.9	15
57 3/4"	30"	4'	120	1	7.6	9.2	15
57 3/4"	30"	2'	120/208	1	3.9	4.9	20
57 3/4"	30"	3'	120/208	1	6.1	7.6	20
57 3/4"	30"	4'	120/208	1	6.1	7.6	20
57 3/4"	35"	2'	120	1	4.8	5.8	15
57 3/4"	35"	3'	120	1	7.3	8.9	15
57 3/4"	35"	4'	120	1	7.6	9.2	15
57 3/4"	35"	2'	120/208	1	3.9	4.9	20
57 3/4"	35"	3'	120/208	1	6.1	7.6	20
57 3/4"	35"	4'	120/208	1	6.1	7.6	20
78 1/2"	30"	3'	120	1	7.3	8.9	15
78 1/2"	30"	4'	120	1	7.6	9.1	15
78 1/2"	30"	3'	120/208	1	6.1	7.6	20
78 1/2"	30"	4'	120/208	1	6.0	7.5	20
78 1/2"	32"	3'	120	1	7.3	8.9	15
78 1/2"	32"	4'	120	1	7.6	9.1	15
78 1/2"	32"	3'	120/208	1	6.1	7.6	20
78 1/2"	32"	4'	120/208	1	6.0	7.5	20

ELECTRICAL DATA

Case Height	Case Depth	Case Length	Fans Per Case	High Efficiency Fans		Anit-Condensate Heaters	
				120 Volts		120 Volts	
				Amps	Watts	Amps	Watts
57 3/4"	30"	2'	1	0.30	25	0.04	4.5
57 3/4"	30"	3'	1	0.30	25	0.04	4.5
57 3/4"	30"	4'	2	0.60	50	0.08	9.0
57 3/4"	35"	2'	1	0.30	25	0.04	4.5
57 3/4"	35"	3'	1	0.30	25	0.06	6.8
57 3/4"	35"	4'	2	0.60	50	0.08	9.0
78 1/2"	30"	3'	1	0.30	25	0.06	6.8
78 1/2"	30"	4'	2	0.60	50	0.08	9.0
78 1/2"	32"	3'	1	0.30	25	0.06	6.8
78 1/2"	32"	4'	2	0.60	50	0.08	9.0

NOTES:

- "----" Indicates that the feature is not an option on this case model and/or the data is not yet available at this time.
- Listed discharge air velocity represents the average velocity at the peak of defrost.
- RLA - Running Load Amps
- LRA - Locked Rotor Amps

**CF-SC**

ALL MEASUREMENTS ARE TAKEN PER ASHRAE-72 SPECIFICATIONS. HILLPHOENIX REFRIGERATED DISPLAY CASES FOR SALE IN THE UNITED STATES MEET OR EXCEED DEPARTMENT OF ENERGY 2017 REQUIREMENTS.

Rev. Date	Rev. #	Rev. Title
03-15-23	1	NEW STANDARDS



LIGHTING DATA						
Case Length	Lights Per Row	Light Length	Clearvoyant 4 LED Lighting (Per Light Row)			
			Standard Power (Cornice or Shelf)		High Power (Cornice)	
			120 Volts		120 Volts	
			Amps	Watts	Amps	Watts
2'	1	2'	0.02	1.9	0.03	3.8
3'	1	3'	0.04	4.8	0.09	10.8
4'	1	4'	0.05	5.9	0.12	14.9

GUIDELINES AND CONTROL SETTINGS					
Case Height	Case Depth	Case Length	24hr Energy Usage (kWh)	Discharge Air (°F)	Discharge Air Velocity (FPM)
57 3/4"	30"	2'	5.78	26	147
57 3/4"	30"	3'	5.99	26	107
57 3/4"	30"	4'	6.20	26	161
57 3/4"	35"	2'	5.78	26	147
57 3/4"	35"	3'	5.99	26	107
57 3/4"	35"	4'	6.20	26	111
78 1/2"	30"	3'	12.80	26	107
78 1/2"	30"	4'	18.21	26	111
78 1/2"	32"	3'	12.80	26	107
78 1/2"	32"	4'	18.21	26	111

CONDENSING UNIT DATA										
Case Height	Case Depth	Case Length	Volts	Phase	RLA (Amps)	LRA (Amps)	Refrig.	Grams	Condenser Fans	
									Amps	Watts
57 3/4"	30"	2'	120	1	3.9	25.1	R290	82	0.43	25
57 3/4"	30"	3'	120	1	6.1	42.0	R290	136	0.53	30
57 3/4"	30"	4'	120	1	6.1	42.0	R290	136	0.53	30
57 3/4"	35"	2'	120	1	3.9	42.0	R290	82	0.43	25
57 3/4"	35"	3'	120	1	6.1	42.0	R290	136	0.53	30
57 3/4"	35"	4'	120	1	6.1	42.0	R290	146	0.53	30
78 1/2"	30"	3'	120	1	6.1	42.0	R290	136	0.53	30
78 1/2"	30"	4'	120	1	8.4	41.5	R290	146	0.53	30
78 1/2"	32"	3'	120	1	6.1	42.0	R290	136	0.53	30
78 1/2"	32"	4'	120	1	6.0	33.7	R290	134	0.53	30

DEFROST CONTROLS							
Defrosts Per Day	Run-Off Time (Min)	Electric Defrost		Timed-Off Defrost		Hot Gas Defrost	
		Fail-Safe (Min)	Termination Temp (°F)	Fail-Safe (Min)	Termination Temp (°F)	Fail-Safe (Min)	Termination Temp (°F)
6	---	---	---	30	45	---	---



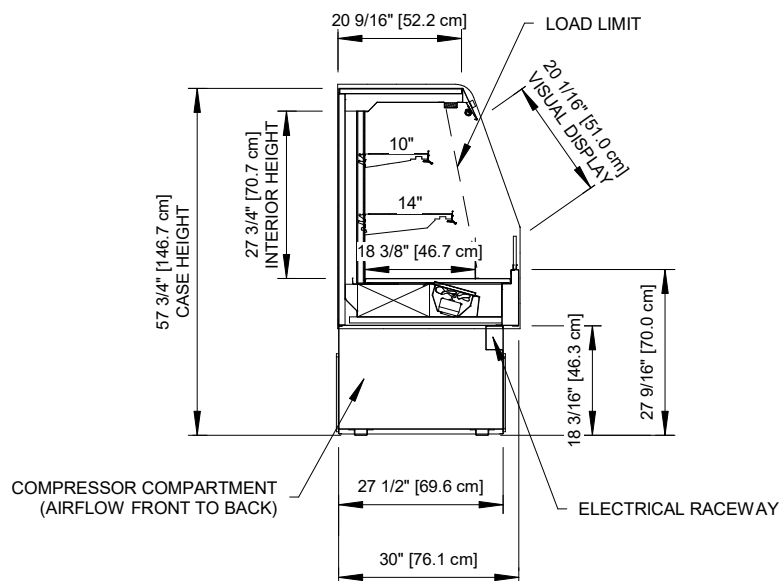
CF-SC



ALL MEASUREMENTS ARE TAKEN PER ASHRAE-72 SPECIFICATIONS. HILLPHOENIX REFRIGERATED DISPLAY CASES FOR SALE IN THE UNITED STATES MEET OR EXCEED DEPARTMENT OF ENERGY 2017 REQUIREMENTS.

Rev. Date	Rev. #	Rev. Title
03-15-23	1	NEW STANDARDS

Self-Service Open Multi-Deck Merchandiser 2', 3' & 4' (Bakery/Beverage/Dairy/Deli)



Technical drawing of a 24-inch wide case. The drawing shows the front and side views with dimensions in inches and millimeters.

Dimensions:

- Overall height: 30" [76.2 cm]
- Height from base to top of case: 4 5/8" [11.7 cm]
- Height from base to toe kick: 27 1/2" [69.9 cm]
- Width of case: 24 1/2" [62.2 cm] (2' case)
- Width of case: 36 1/2" [92.7 cm] (3' case)
- Width of case: 48 1/2" [123.2 cm] (4' case)
- Distance from base to power supply: 6" [15.2 cm]
- Toe kick height: 13/16" [2.1 cm]

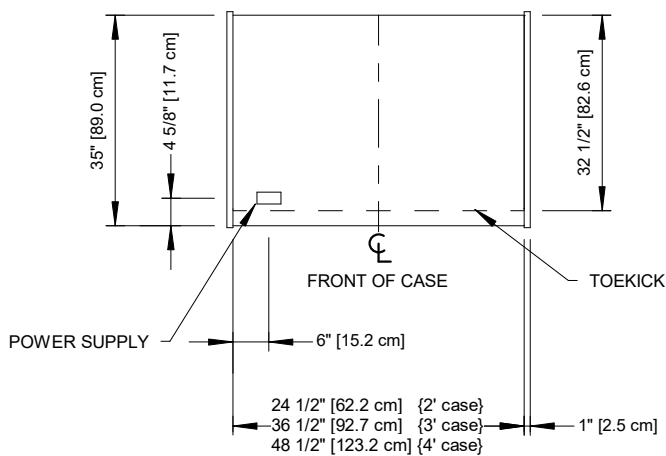
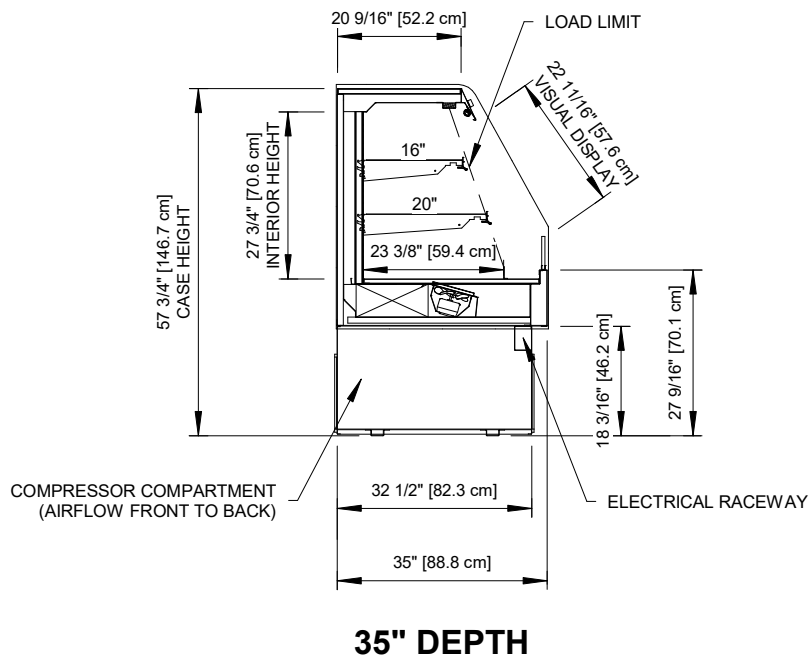
Labels:

- FRONT OF CASE
- TOEKICK
- POWER SUPPLY



ALL MEASUREMENTS ARE TAKEN PER ASHRAE-72 SPECIFICATIONS. HILLPHOENIX REFRIGERATED DISPLAY CASES FOR SALE IN THE UNITED STATES MEET OR EXCEED DEPARTMENT OF ENERGY 2017 REQUIREMENTS.

Rev. Date	Rev. #	Rev. Title
03-15-23	1	NEW STANDARDS



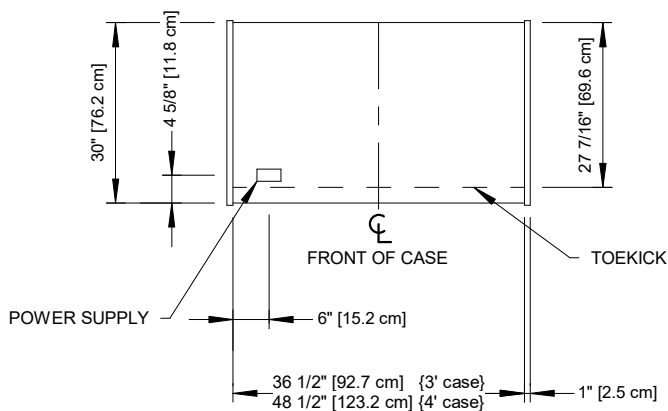
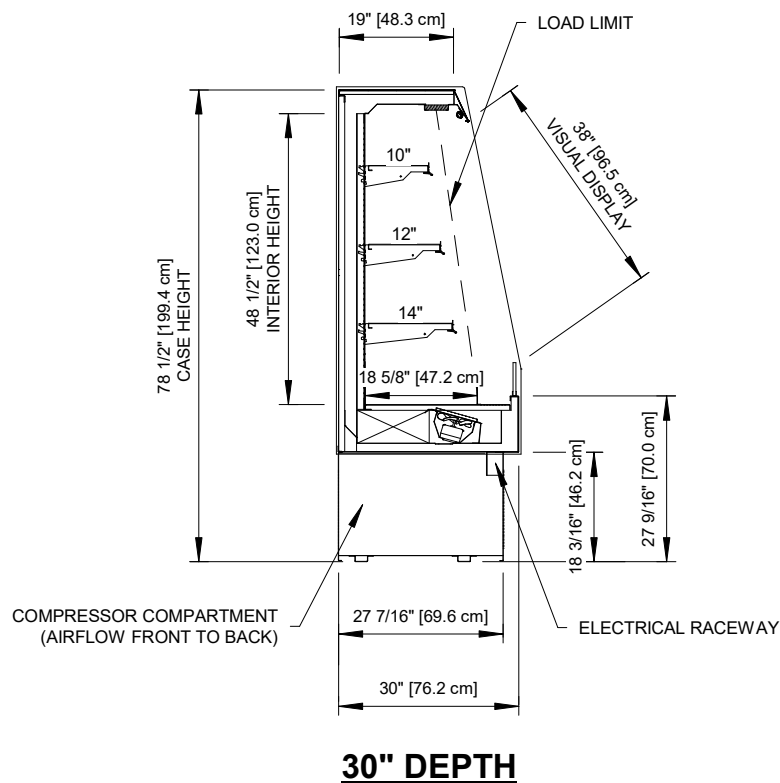
CF-SC



a DOVER company

ALL MEASUREMENTS ARE TAKEN PER ASHRAE-72 SPECIFICATIONS. HILLPHOENIX REFRIGERATED DISPLAY CASES FOR SALE IN THE UNITED STATES MEET OR EXCEED DEPARTMENT OF ENERGY 2017 REQUIREMENTS.

Rev. Date	Rev. #	Rev. Title
03-15-23	1	NEW STANDARDS



CF-SC

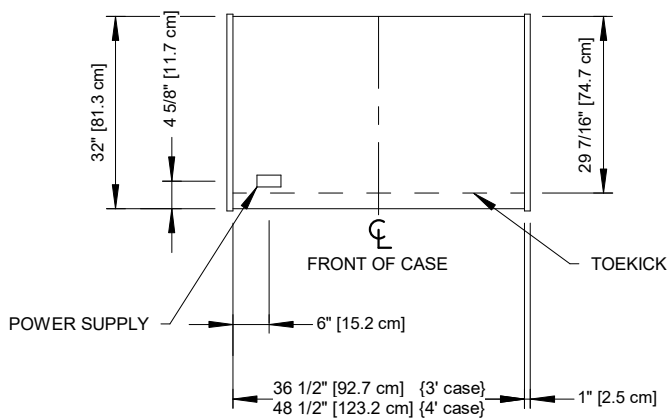
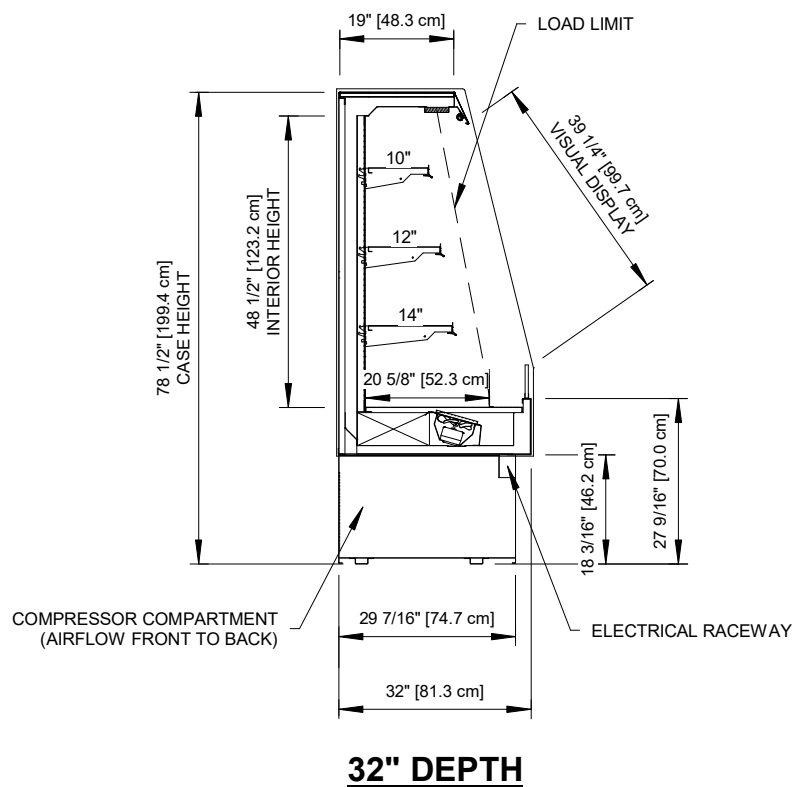
Rev. Date	Rev. #	Rev. Title
03-15-23	1	NEW STANDARDS



ALL MEASUREMENTS ARE TAKEN PER ASHRAE-72 SPECIFICATIONS. HILLPHOENIX REFRIGERATED DISPLAY CASES FOR SALE IN THE UNITED STATES MEET OR EXCEED DEPARTMENT OF ENERGY 2017 REQUIREMENTS.



a DOVER company



CF-SC



a DOVER company

ALL MEASUREMENTS ARE TAKEN PER ASHRAE-72 SPECIFICATIONS. HILLPHOENIX REFRIGERATED DISPLAY CASES FOR SALE IN THE UNITED STATES MEET OR EXCEED DEPARTMENT OF ENERGY 2017 REQUIREMENTS.

Rev. Date	Rev. #	Rev. Title
03-15-23	1	NEW STANDARDS