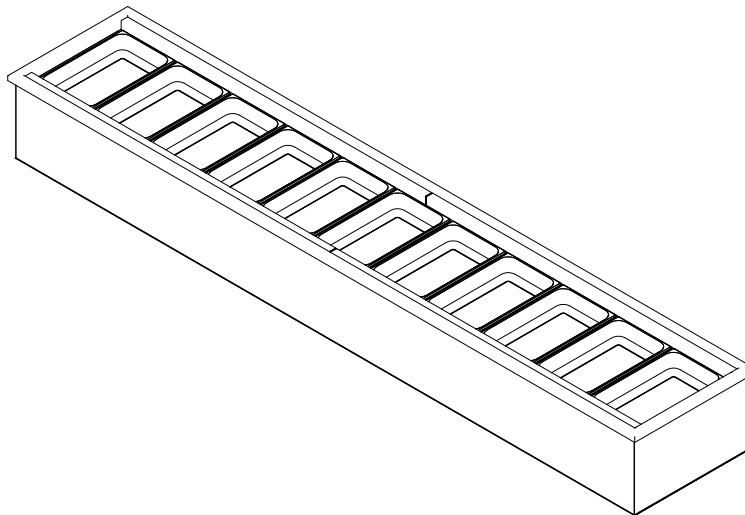


GENERAL NOTES:

- "---" Indicates that the feature is not an option on this case model and/or the data is not yet available at this time.



SHIPPING WEIGHT	
Case	Weight
CW-28-R	---



ENGINEERED FOR STORES WITH AMBIENT CONDITIONS NOT TO EXCEED 75° AND 55% RELATIVE HUMIDITY. DUE TO ENGINEERING IMPROVEMENTS SPECIFICATIONS MAY CHANGE WITHOUT NOTICE. ALL MEASUREMENTS ARE TAKEN PER ASHRAE-72 SPECIFICATIONS. HILLPHOENIX REFRIGERATED DISPLAY CASES FOR SALE IN THE UNITED STATES MEET OR EXCEED DEPARTMENT OF ENERGY 2017 REQUIREMENTS. NUMBERS ARE BASED ON STANDARD CASE SIZES. CONSULT ENGINEERING.

CW-28-R

Rev. Date	Rev. #	Rev. Title
03-10-22	2	DATA UPDATE
07-20-21	1	NEW STANDARDS

ELECTRICAL DATA									
	Fans Per Case	High Efficiency Fans		Anti-Condensate Fans		Drain Heaters		Optional Defrost Heaters	
		120 Volts		120 Volts		120 Volts		208 Volts	
		Amps	Watts	Amps	Watts	Amps	Watts	Amps	Watts
2 Well	1	0.30	36.0	---	---	---	---	---	---
3 Well	1	0.30	36.0	---	---	---	---	---	---
4 Well	2	0.60	72.0	---	---	---	---	---	---
5 Well	2	0.60	72.0	---	---	---	---	---	---
6 Well	2	0.60	72.0	---	---	---	---	---	---
7 Well	2	0.60	72.0	---	---	---	---	---	---
8 Well	2	0.60	72.0	---	---	---	---	---	---
9 Well	3	0.90	108.0	---	---	---	---	---	---
10 Well	3	0.90	108.0	---	---	---	---	---	---
11 Well	3	0.90	108.0	---	---	---	---	---	---

LIGHTING DATA						
	Lights Per Row	Light Length	Clearvoyant 4 LED Lighting (Per Light Row)			
			Standard Power (Cornice or Shelf)		High Power (Cornice)	
			120 Volts		120 Volts	
			Amps	Watts	Amps	Watts
2 Well	---	---	---	---	---	---
3 Well	---	---	---	---	---	---
4 Well	---	---	---	---	---	---
5 Well	---	---	---	---	---	---
6 Well	---	---	---	---	---	---
7 Well	---	---	---	---	---	---
8 Well	---	---	---	---	---	---
9 Well	---	---	---	---	---	---
10 Well	---	---	---	---	---	---
11 Well	---	---	---	---	---	---

GUIDELINES AND CONTROL SETTINGS (DX) {DIRECT EXPANSION HFC/CO2}						
BTUH/ft			Superheat Set Point @ Bulb (°F)	Evaporator (°F)	Discharge Air (°F)	Discharge Air Velocity (FPM)
Conventional	Parallel					
Angled	Flat	Parallel				
293	320	255	8 - 10	26	33.34	120 - 160

- NOTES:**
- "----" Indicates that the feature is not an option on this case model and/or the data is not yet available at this time.
 - Listed discharge air velocity represents the average velocity at the peak of defrost.
 - Discharge air temperature values represent readings taken within the upper air channel immediately behind/upstream of the honeycomb.



ENGINEERED FOR STORES WITH AMBIENT CONDITIONS NOT TO EXCEED 75° AND 55% RELATIVE HUMIDITY. DUE TO ENGINEERING IMPROVEMENTS SPECIFICATIONS MAY CHANGE WITHOUT NOTICE. ALL MEASUREMENTS ARE TAKEN PER ASHRAE-72 SPECIFICATIONS. HILLPHOENIX REFRIGERATED DISPLAY CASES FOR SALE IN THE UNITED STATES MEET OR EXCEED DEPARTMENT OF ENERGY 2017 REQUIREMENTS. NUMBERS ARE BASED ON STANDARD CASE SIZES. CONSULT ENGINEERING.

CW-28-R

Rev. Date	Rev. #	Rev. Title
03-10-22	2	DATA UPDATE
07-20-21	1	NEW STANDARDS



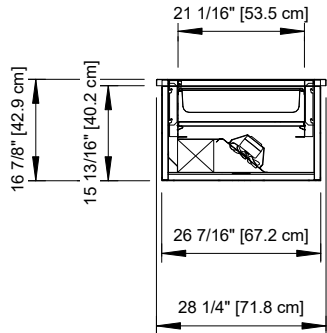
DEFROST CONTROLS {DIRECT EXPANSION HFC/CO2}							
Defrosts Per Day	Run-Off Time (Min)	Electric Defrost		Timed-Off Defrost		Hot Gas Defrost	
		Fail-Safe (Min)	Termination Temp (°F)	Fail Safe (Min)	Termination Temp (°F)	Fail-Safe (Min)	Termination Temp (°F)
4	---	---	---	47	45	---	---



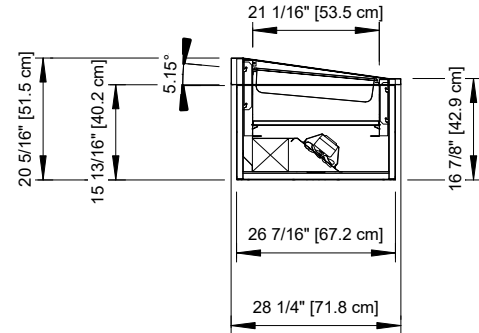
ENGINEERED FOR STORES WITH AMBIENT CONDITIONS NOT TO EXCEED 75° AND 55% RELATIVE HUMIDITY. DUE TO ENGINEERING IMPROVEMENTS SPECIFICATIONS MAY CHANGE WITHOUT NOTICE. ALL MEASUREMENTS ARE TAKEN PER ASHRAE-72 SPECIFICATIONS. HILLPHOENIX REFRIGERATED DISPLAY CASES FOR SALE IN THE UNITED STATES MEET OR EXCEED DEPARTMENT OF ENERGY 2017 REQUIREMENTS. NUMBERS ARE BASED ON STANDARD CASE SIZES. CONSULT ENGINEERING.

CW-28-R

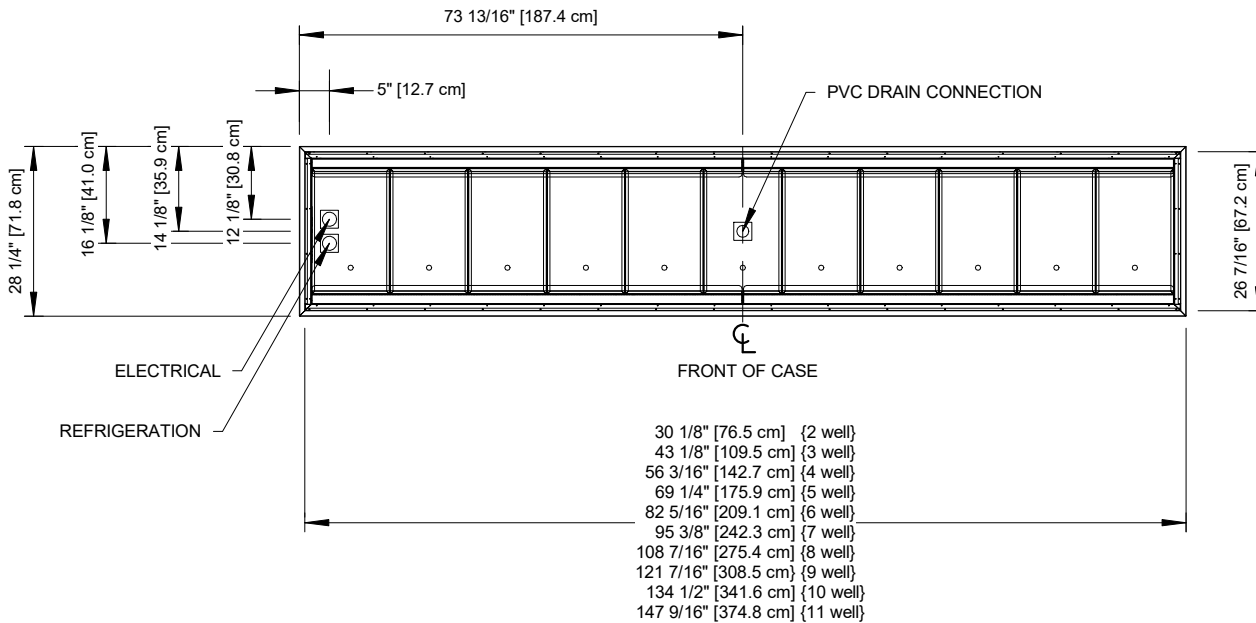
Rev. Date	Rev. #	Rev. Title
03-10-22	2	DATA UPDATE
07-20-21	1	NEW STANDARDS



FLAT WELL



ANGLED WELL (OPTIONAL)



ENGINEERED FOR STORES WITH AMBIENT CONDITIONS NOT TO EXCEED 75° AND 55% RELATIVE HUMIDITY. DUE TO ENGINEERING IMPROVEMENTS SPECIFICATIONS MAY CHANGE WITHOUT NOTICE. ALL MEASUREMENTS ARE TAKEN PER ASHRAE-72 SPECIFICATIONS. HILLPHOENIX REFRIGERATED DISPLAY CASES FOR SALE IN THE UNITED STATES MEET OR EXCEED DEPARTMENT OF ENERGY 2017 REQUIREMENTS. NUMBERS ARE BASED ON STANDARD CASE SIZES. CONSULT ENGINEERING.

CW-28-R

Rev. Date	Rev. #	Rev. Title
03-10-22	2	DATA UPDATE
07-20-21	1	NEW STANDARDS