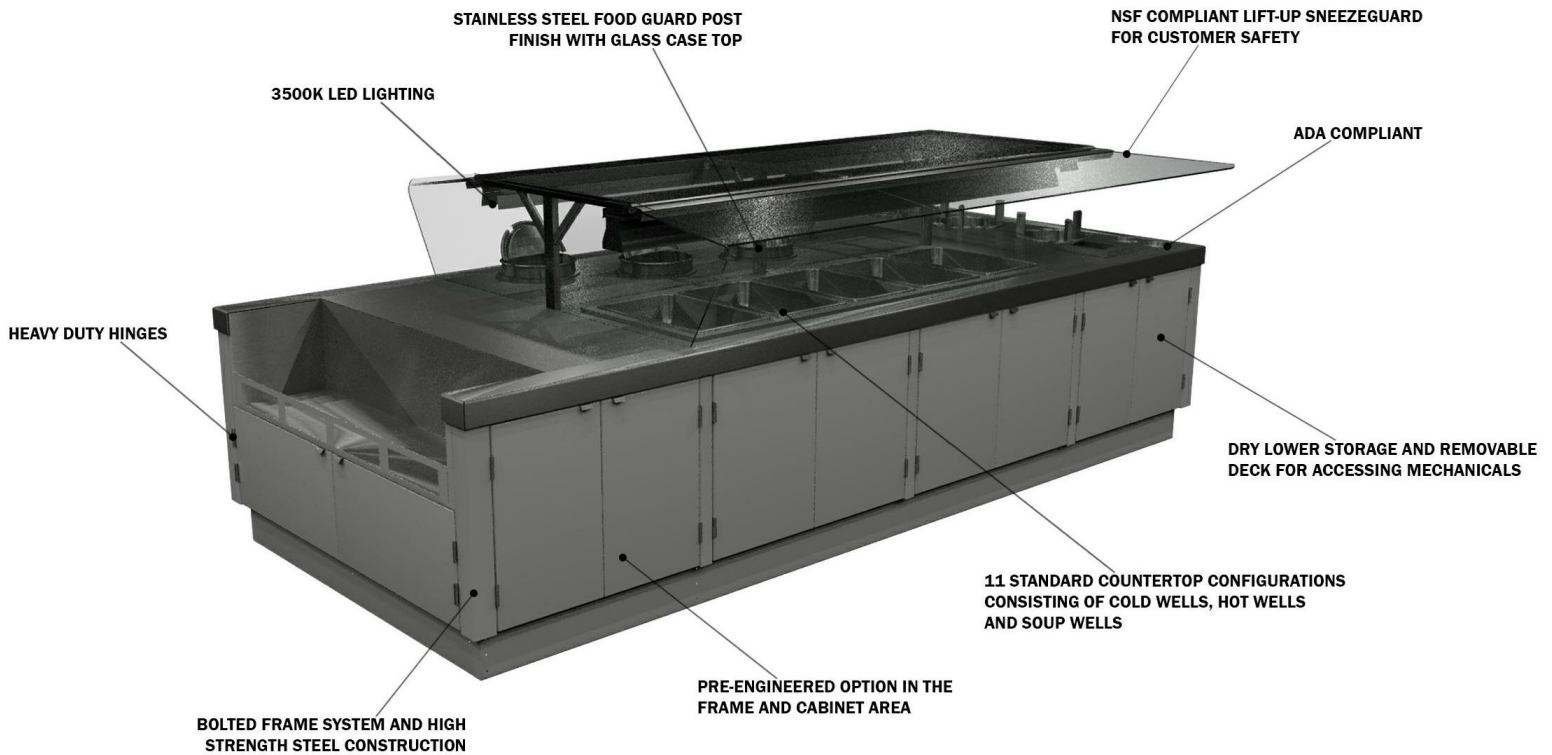


**GENERAL NOTES:**

- "---" Indicates that the feature is not an option on this case model and/or the data is not yet available at this time.



SHIPPING WEIGHT	
Case	Weight
MBI-512H-P11	---



ALL MEASUREMENTS ARE TAKEN PER ASHRAE-72-2005 SPECIFICATIONS. HILLPHOENIX REFRIGERATED DISPLAY CASES FOR SALE IN THE UNITED STATES MEET OR EXCEED DEPARTMENT OF ENERGY 2017 REQUIREMENTS.

## MBI-512H-P11

Rev. Date	Rev. #	Rev. Title
05-01-20	1	NEW STANDARDS



# MBI-512H-P11

MBI-11		
120/208-1-60	L-1	L-2
LED LIGHTS	0.45	
TOP LIGHTS (4) 40W		1.33
TOP HEAT (3) 400W	5.77	5.77
CONTROL FAN	0.11	0.11
HWBH-11QT (4)	13.6	13.6
HWBI-5MA CIRCUIT 1	11.6	11.6
HWBI-5MA CIRCUIT 2	17.3	17.3
TOTAL AMPS	48.83	49.71
MCA	63	
LOAD CENTER Q0816L100F/S		
8.88W X 12.57H X 3.8D		

MBI-11			
120/208-3-60	L-1	L-2	L-3
LED LIGHTS	0.45		
TOP LIGHTS (4) 40W		1.33	
TOP HEAT (3) 400W	5.77	5.77	
CONTROL FAN	0.11	0.11	
HWBH-11QT (4)		13.6	13.6
HWBI-5MA CIRCUIT 1	11.6	11.6	
HWBI-5MA CIRCUIT 2	17.3		17.3
TOTAL AMPS	35.23	32.41	30.9
MCA	45		



ALL MEASUREMENTS ARE TAKEN PER ASHRAE-72-2005 SPECIFICATIONS. HILLPHOENIX REFRIGERATED DISPLAY CASES FOR SALE IN THE UNITED STATES MEET OR EXCEED DEPARTMENT OF ENERGY 2017 REQUIREMENTS.

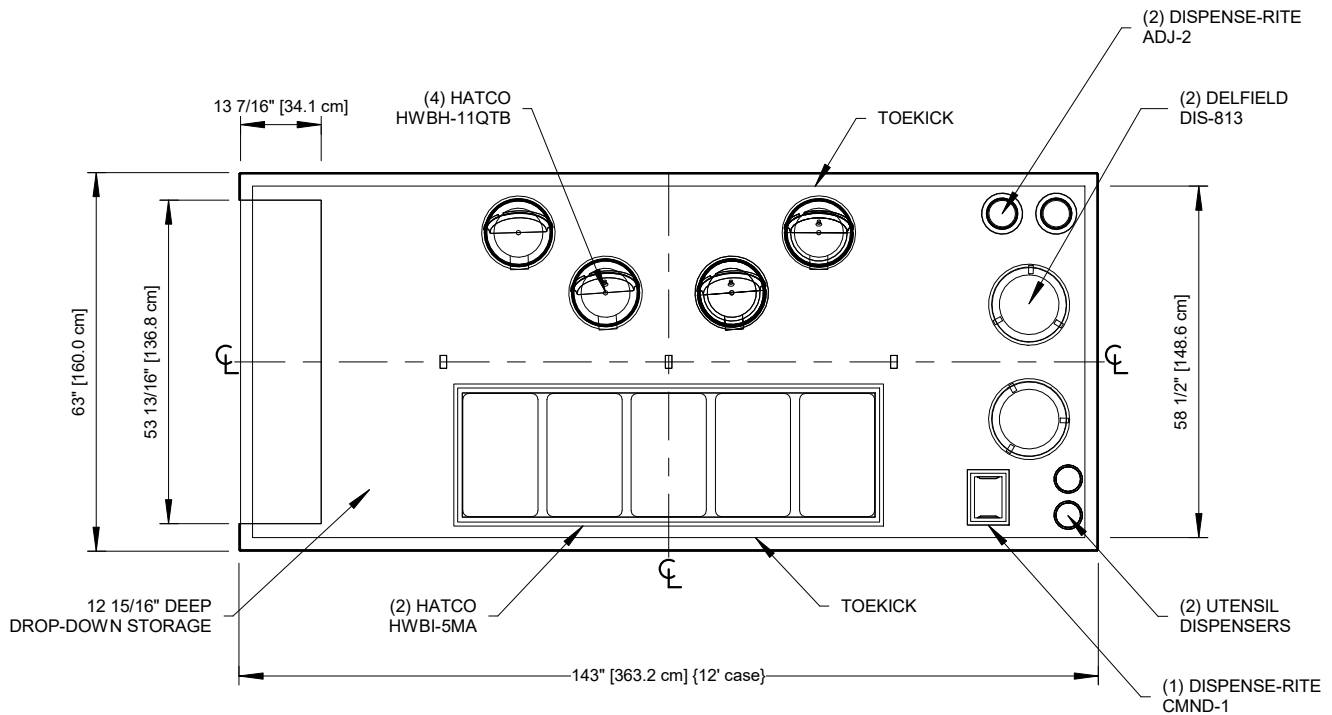
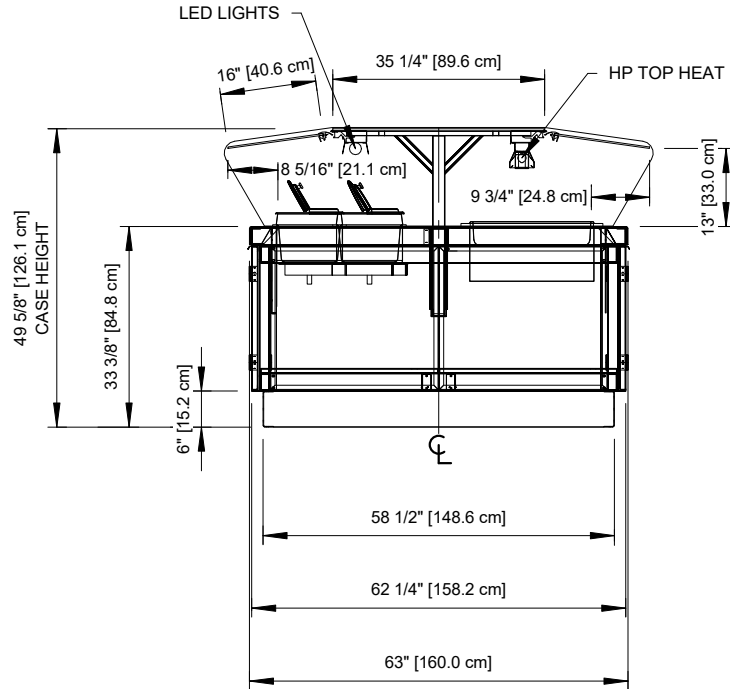
## MBI-512H-P11

Rev. Date	Rev. #	Rev. Title
05-01-20	1	NEW STANDARDS



# MBI-512H-P11

Self-Service Open Salad Bar Island Merchandiser w/ Lower Storage  
12' (Deli)



## MBI-512H-P11



ALL MEASUREMENTS ARE TAKEN PER ASHRAE-72-2005 SPECIFICATIONS. HILLPHOENIX REFRIGERATED DISPLAY CASES FOR SALE IN THE UNITED STATES MEET OR EXCEED DEPARTMENT OF ENERGY 2017 REQUIREMENTS.

Rev. Date	Rev. #	Rev. Title
05-01-20	1	NEW STANDARDS



A DOVER COMPANY