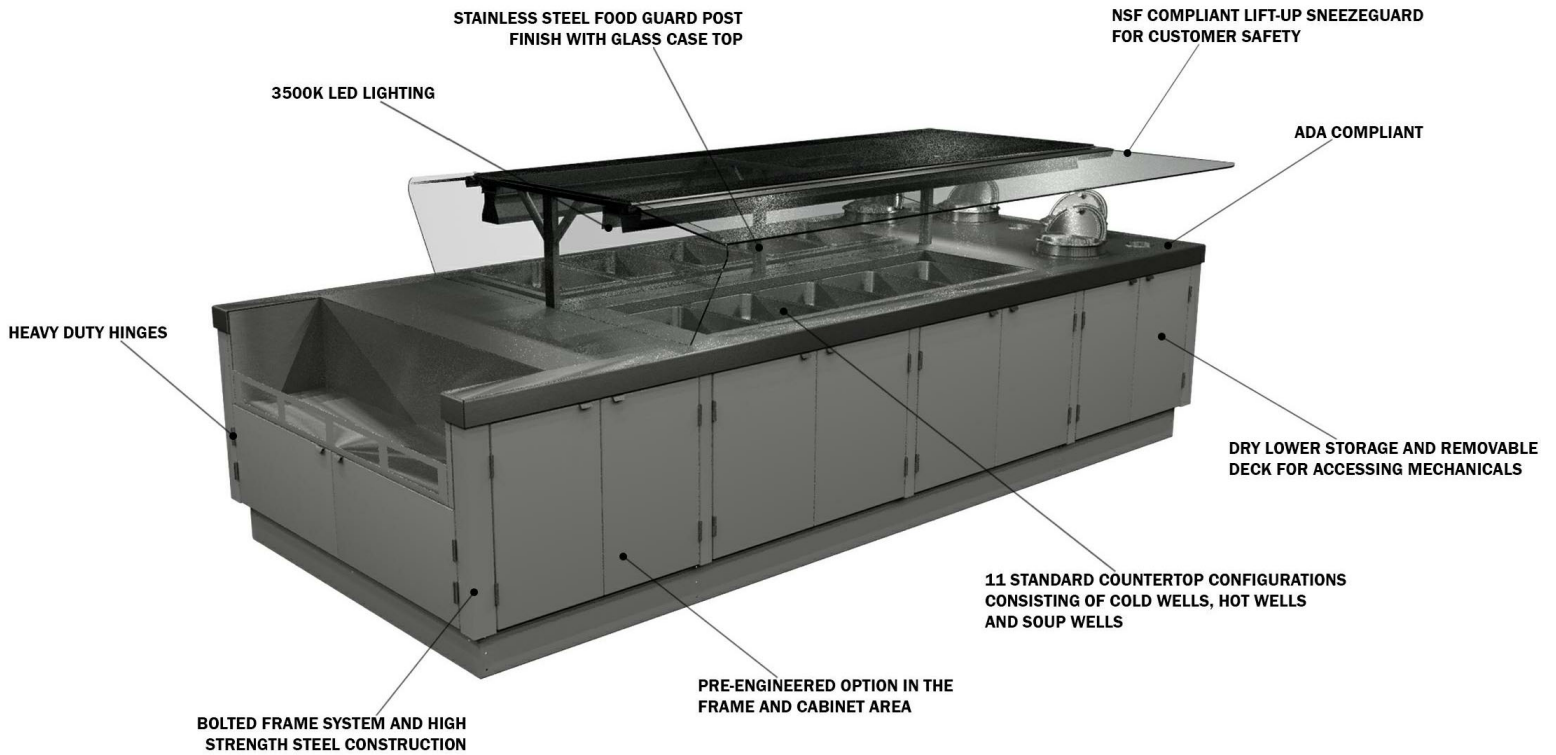


# MBI-512RH-P10

Self-Service Open Salad Bar Island Merchandiser w/ Lower Storage  
12' (Deli)

## GENERAL NOTES:

- "---" Indicates that the feature is not an option on this case model and/or the data is not yet available at this time.



SHIPPING WEIGHT	
Case	Weight
MBI-512RH-P10	---



ALL MEASUREMENTS ARE TAKEN PER ASHRAE-72-2005 SPECIFICATIONS. HILLPHOENIX REFRIGERATED DISPLAY CASES FOR SALE IN THE UNITED STATES MEET OR EXCEED DEPARTMENT OF ENERGY 2017 REQUIREMENTS.

## MBI-512RH-P10

Rev. Date	Rev. #	Rev. Title
05-03-20	1	NEW STANDARDS



# MBI-512RH-P10

Self-Service Open Salad Bar Island Merchandiser w/ Lower Storage  
12' (Deli)

MBI-10		
120/208-1-60	L-1	L-2
CW-EVAP FANS	0.6	
LED LIGHTS	0.45	
TOP LIGHTS (4) 40W		1.33
TOP HEAT (3) 400W	5.77	5.77
CONTROL FAN	0.11	0.11
HWBH-11QT (4)	13.6	13.6
HWBI-5MA CIRCUIT 1	11.6	11.6
HWBI-5MA CIRCUIT 2	17.3	17.3
TOTAL AMPS	49.43	49.71
MCA	63	
LOAD CENTER Q0816L100F/S		
8.88W X 12.57H X 3.8D		
BTUs	1446	
EVAP TEMP.	26°	

MBI-10			
120/208-3-60	L-1	L-2	L-3
CW-EVAP FANS		0.6	
LED LIGHTS		0.45	
TOP LIGHTS (4) 40W		1.33	
TOP HEAT (3) 400W	5.77	5.77	
CONTROL FAN	0.11	0.11	
HWBH-11QT (4)		13.6	13.6
HWBI-5MA CIRCUIT 1	11.6	11.6	
HWBI-5MA CIRCUIT 2	17.3		17.3
TOTAL AMPS	34.78	33.46	30.9
MCA	44		
BTUs	1446		
EVAP TEMP.	26°		



ALL MEASUREMENTS ARE TAKEN PER ASHRAE-72-2005 SPECIFICATIONS. HILLPHOENIX REFRIGERATED DISPLAY CASES FOR SALE IN THE UNITED STATES MEET OR EXCEED DEPARTMENT OF ENERGY 2017 REQUIREMENTS.

## MBI-512RH-P10

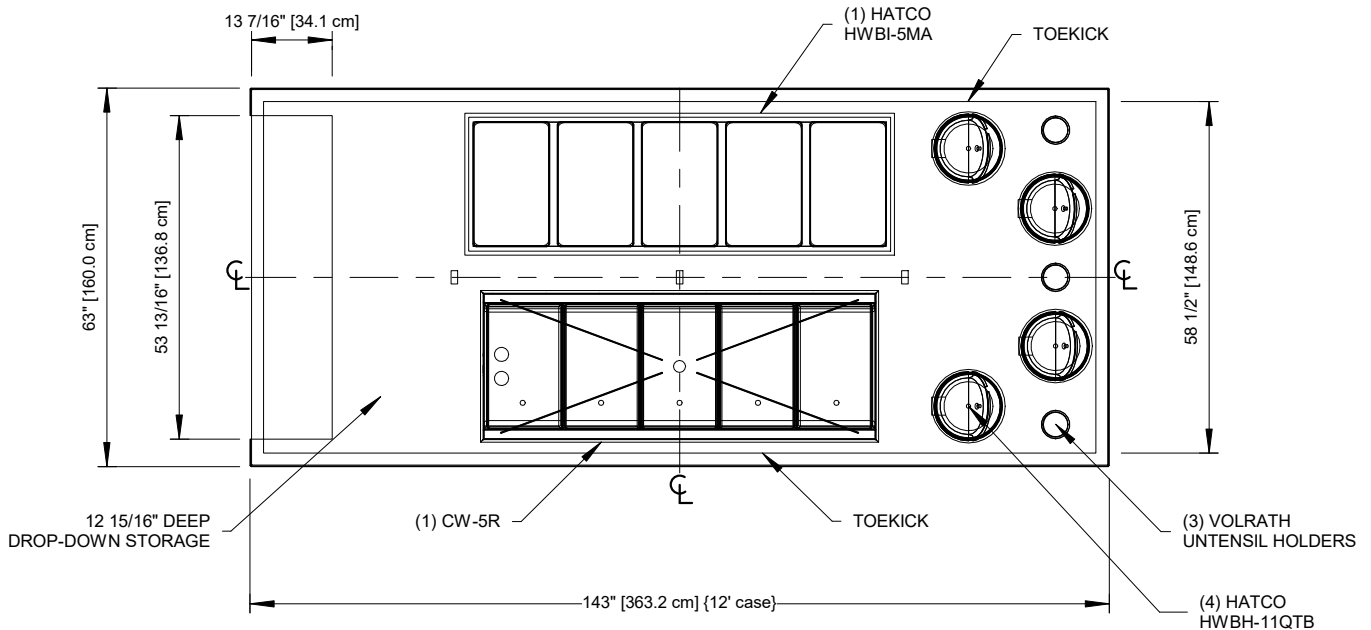
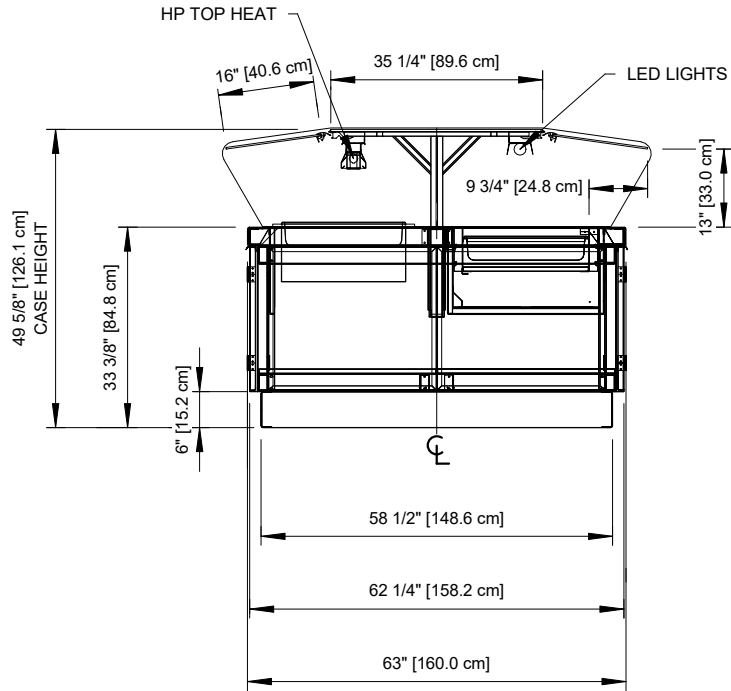
Rev. Date	Rev. #	Rev. Title
05-03-20	1	NEW STANDARDS



A DOVER COMPANY

# MBI-512RH-P10

Self-Service Open Salad Bar Island Merchandiser w/ Lower Storage  
12' (Deli)



ALL MEASUREMENTS ARE TAKEN PER ASHRAE-72-2005 SPECIFICATIONS. HILLPHOENIX REFRIGERATED DISPLAY CASES FOR SALE IN THE UNITED STATES MEET OR EXCEED DEPARTMENT OF ENERGY 2017 REQUIREMENTS.

## MBI-512RH-P10

Rev. Date	Rev. #	Rev. Title
05-03-20	1	NEW STANDARDS

