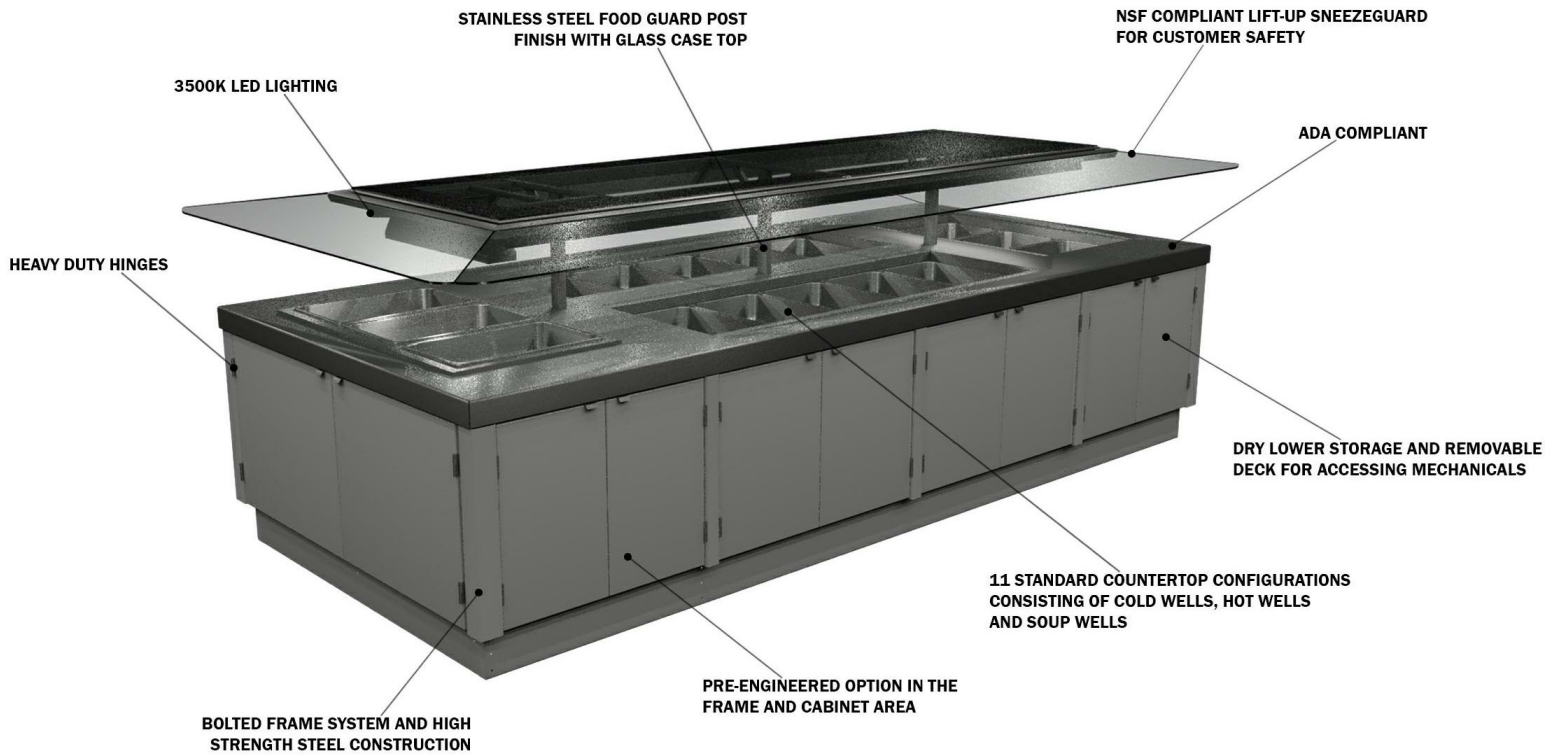


GENERAL NOTES:

- "---" Indicates that the feature is not an option on this case model and/or the data is not yet available at this time.



SHIPPING WEIGHT	
Case	Weight
MBI-512RH-P4	---



ALL MEASUREMENTS ARE TAKEN PER ASHRAE-72-2005 SPECIFICATIONS. HILLPHOENIX REFRIGERATED DISPLAY CASES FOR SALE IN THE UNITED STATES MEET OR EXCEED DEPARTMENT OF ENERGY 2017 REQUIREMENTS.

MBI-512RH-P4

Rev. Date	Rev. #	Rev. Title
04-30-20	1	NEW STANDARDS



MBI-512RH-P4

MBI-4		
120/208-1-60	L-1	L-2
CW-EVAP FANS	1.5	
LED LIGHTS	0.6	
TOP HEAT (2) 400W	3.85	3.85
TOP LIGHTS (3) 40W		1
CONTROL FAN	0.11	0.11
HWBI-3MA	17.4	17.4
TOTAL AMPS	23.46	22.36
MCA	30	
BTUs	3805	
EVAP TEMP.	26°	



ALL MEASUREMENTS ARE TAKEN PER ASHRAE-72-2005 SPECIFICATIONS. HILLPHOENIX REFRIGERATED DISPLAY CASES FOR SALE IN THE UNITED STATES MEET OR EXCEED DEPARTMENT OF ENERGY 2017 REQUIREMENTS.

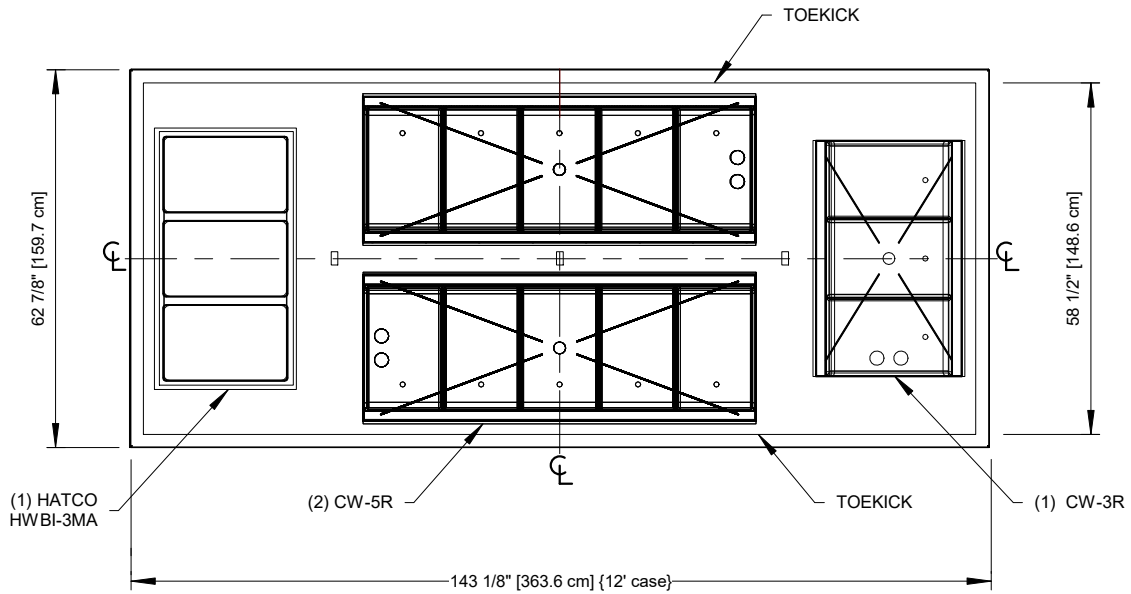
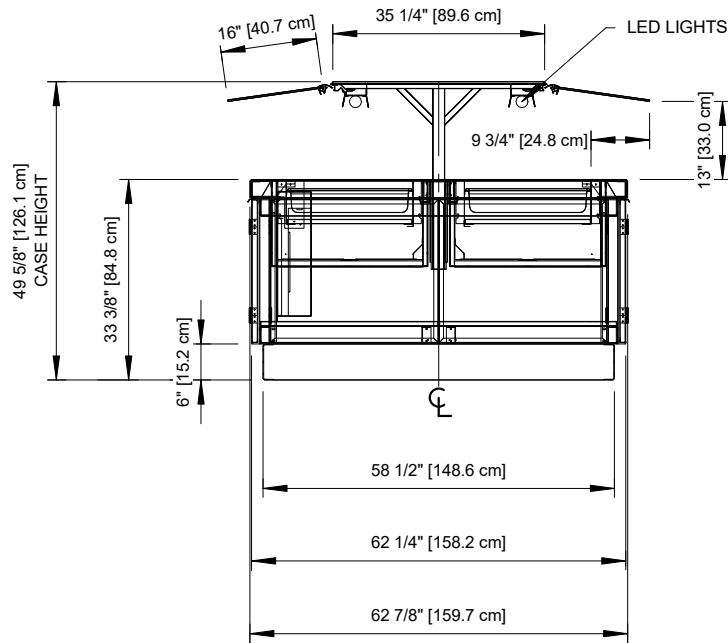
MBI-512RH-P4

Rev. Date	Rev. #	Rev. Title
04-30-20	1	NEW STANDARDS



MBI-512RH-P4

Self-Service Open Salad Bar Island Merchandiser w/ Lower Storage
12' (Deli)



COMPONENT

ALL MEASUREMENTS ARE TAKEN PER ASHRAE-72-2005 SPECIFICATIONS. HILLPHOENIX REFRIGERATED DISPLAY CASES FOR SALE IN THE UNITED STATES MEET OR EXCEED DEPARTMENT OF ENERGY 2017 REQUIREMENTS.

MBI-512RH-P4

Rev. Date	Rev. #	Rev. Title
04-30-20	1	NEW STANDARDS

