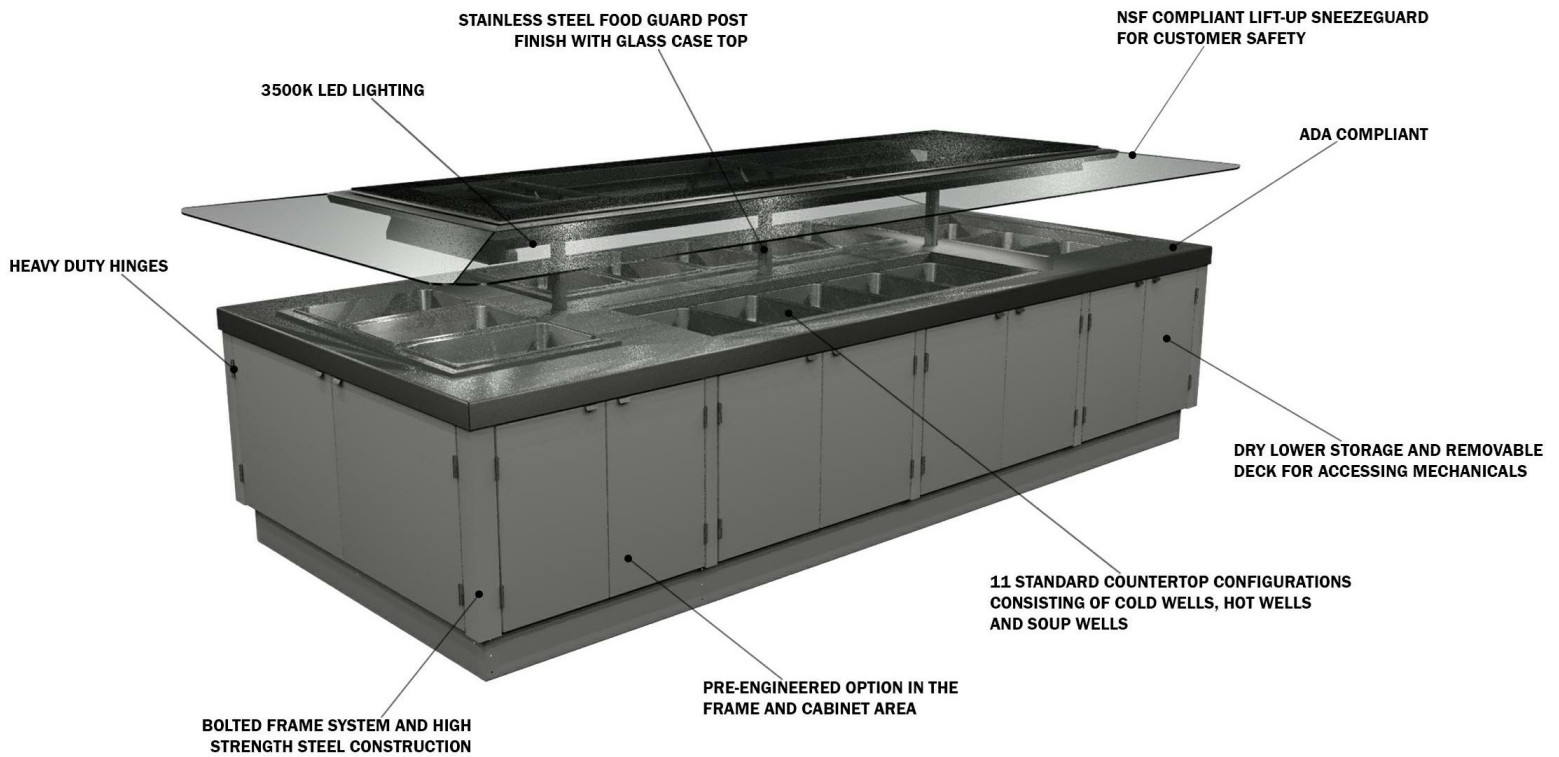


GENERAL NOTES:

- "---" Indicates that the feature is not an option on this case model and/or the data is not yet available at this time.



SHIPPING WEIGHT	
Case	Weight
MBI-512RH-P7	---



ALL MEASUREMENTS ARE TAKEN PER ASHRAE-72-2005 SPECIFICATIONS. HILLPHOENIX REFRIGERATED DISPLAY CASES FOR SALE IN THE UNITED STATES MEET OR EXCEED DEPARTMENT OF ENERGY 2017 REQUIREMENTS.

MBI-512RH-P7

Rev. Date	Rev. #	Rev. Title
05-02-20	1	NEW STANDARDS



MBI-512RH-P7

Self-Service Open Salad Bar Island Merchandiser w/ Lower Storage
12' (Deli)

MBI-07			
120/208-3-60	L-1	L-2	L-3
EVAP FANS	0.9		
LED LIGHTS	0.35		
TOP LIGHTS (7) 40W		2.33	
TOP HEAT (5) 400W	9.62	9.62	
CONTROL FAN	0.11	0.11	
HWBI-3MA	17.4		17.4
HWBI-5MA CIRCUIT 1	11.6	11.6	
HWBI-5MA CIRCUIT 2		17.3	17.3
TOTAL AMPS	39.98	40.96	34.7
MCA	52		
LOAD CENTER QO312L125G 14.25W X 17.92H X 3.75D			
BTUs	2359		
EVAP TEMP.	26°		



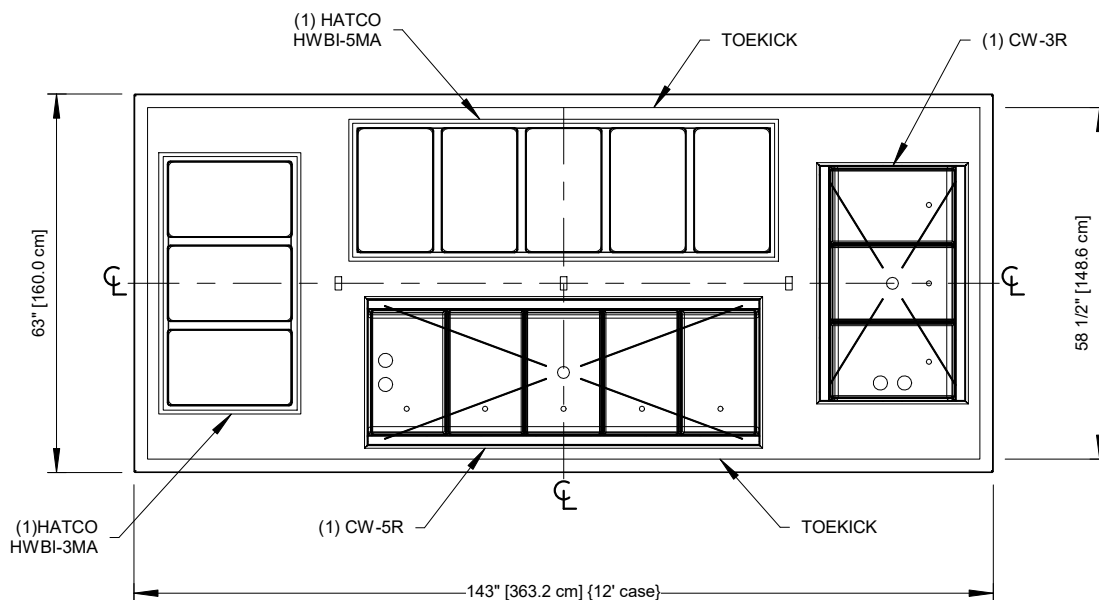
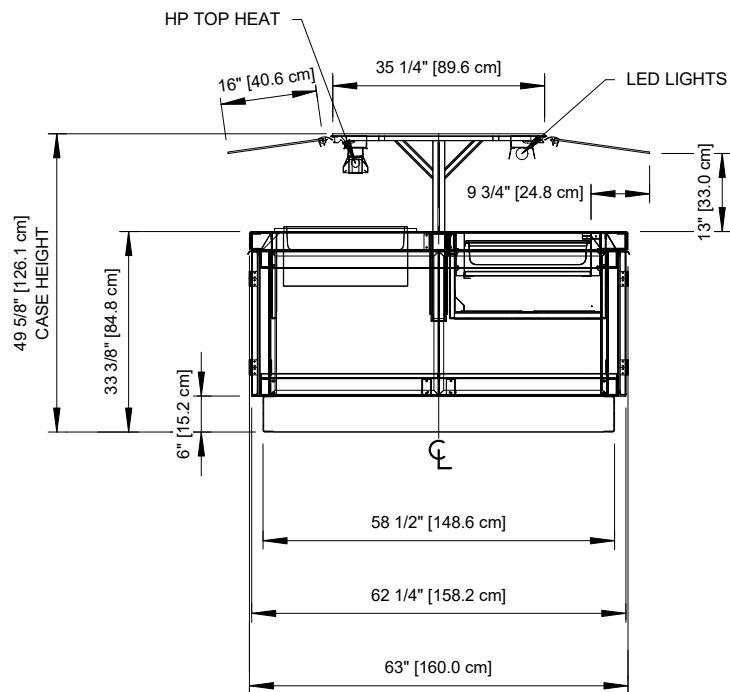
ALL MEASUREMENTS ARE TAKEN PER ASHRAE-72-2005 SPECIFICATIONS. HILLPHOENIX REFRIGERATED DISPLAY CASES FOR SALE IN THE UNITED STATES MEET OR EXCEED DEPARTMENT OF ENERGY 2017 REQUIREMENTS.

MBI-512RH-P7

Rev. Date	Rev. #	Rev. Title
05-02-20	1	NEW STANDARDS



A DOVER COMPANY



ALL MEASUREMENTS ARE TAKEN PER ASHRAE-72-2005 SPECIFICATIONS. HILLPHOENIX REFRIGERATED DISPLAY CASES FOR SALE IN THE UNITED STATES MEET OR EXCEED DEPARTMENT OF ENERGY 2017 REQUIREMENTS.

MBI-512RH-P7

Rev. Date	Rev. #	Rev. Title
05-02-20	1	NEW STANDARDS

