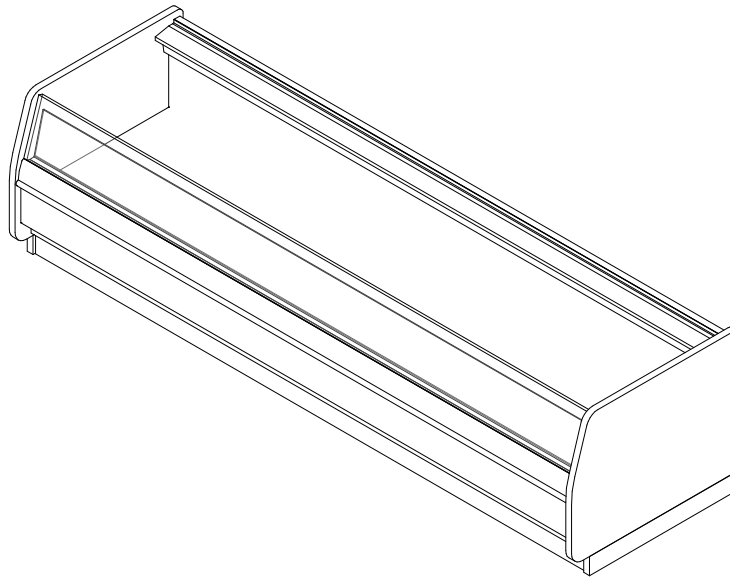


GENERAL NOTES

- "---" indicates that the feature is not an option on this case model and/or the data is not yet available yet.



| SHIPPING WEIGHT | |
|-----------------|--------|
| Case | Weight |
| ONZ | --- |



COMPONENT

ALL MEASUREMENTS ARE TAKEN PER ASHRAE-72-2005 SPECIFICATIONS. HILLPHOENIX REFRIGERATED DISPLAY CASES FOR SALE IN THE UNITED STATES MEET OR EXCEED DEPARTMENT OF ENERGY 2017 REQUIREMENTS.

ONZ

| Rev. Date | Rev. # | Rev. Title |
|-----------|--------|--------------------|
| 5-13-21 | 4 | OPTION PAGE UPDATE |
| 4-9-20 | 3 | DATA UPDATE |

| ELECTRICAL DATA | | | | | | | | | | | |
|-----------------|---------------|----------------------|-------|-------------------------|-------|--------------|-------|-----------------|-------|-----------|-------|
| Case Length | Fans Per Case | High Efficiency Fans | | Anti-Condensate Heaters | | Drain Heater | | Defrost Heaters | | | |
| | | 120 Volt | | 120 Volts | | 120 Volts | | 208 Volts | | 240 Volts | |
| | | Amps | Watts | Amps | Watts | Amps | Watts | Amps | Watts | Amps | Watts |
| 8' | 2 | 0.30 | 22.0 | 0.75 | 90 | 0.13 | 15 | 11.60 | 2400 | 13.30 | 3196 |
| 12' | 3 | 0.45 | 0.33 | 1.42 | 120 | 0.13 | 15 | 17.30 | 3600 | 20.00 | 4795 |

| GUIDELINES AND CONTROL SETTINGS | | | | | | | | | | | |
|---------------------------------|--------------|----------|--------------|----------|---------------------------------|-----------------|-------------|--------------------|-------------|------------------------------|-------------|
| Application | BTUH/ft | | | | Superheat Set Point @ Bulb (°F) | Evaporator (°F) | | Discharge Air (°F) | | Discharge Air Velocity (FPM) | |
| | Solid Front | | Glass Front | | | Solid Front | Glass Front | Solid Front | Glass Front | Solid Front | Glass Front |
| | Conventional | Parallel | Conventional | Parallel | | | | | | | |
| Frozen Food | 369 | 352 | 448 | 427 | 3 - 5 | - 12 | - 14 | - 5 | - 5 | 225 | 225 |
| Ice Cream | 422 | 403 | 481 | 459 | 3 - 5 | - 22 | - 22 | - 13 | - 13 | 225 | 225 |
| Medium Temp | 213 | 204 | 286 | 273 | 6 - 8 | 28 | 28 | 34 | 34 | 225 | 225 |

| DEFROST CONTROLS | | | | | | | | |
|-------------------------|------------------|--------------------|------------------|-----------------------|-------------------|-----------------------|-----------------|-----------------------|
| Application | Defrosts Per Day | Run Off Time (Min) | Electric Defrost | | Timed-Off Defrost | | Hot Gas Defrost | |
| | | | Fail Safe (Min) | Termination Temp (°F) | Fail-Safe (Min) | Termination Temp (°F) | Fail Safe (Min) | Termination Temp (°F) |
| Frozen Food / Ice Cream | 1 | 13 - 15 | 35 | 52 | --- | --- | 20 | 60 |
| Medium Temp | 1 | --- | 35 | 42 | 45 | 42 | 20 | 60 |

NOTES

- “---” indicates the feature is not an option for this case model and/or the data is not yet available.
- Load data represents the sum of both coils.
- Listed evaporator temperature represents unlighted shelves.
- BTUH load increases by 132 BTUH/ft when aftermarket merchandising accessories are utilized.
- Listed discharge air velocity represents the average velocity at the peak of defrost.
- Temperature and defrost settings listed above are recommended start-up settings. Final operational settings may need to be adjusted for the store conditions in which the case operates.
- The recommended evaporator temperatures may need to be adjusted based on system setup, store conditions, etc.
- The minimum recommended evaporator temperature is 4°F below the listed evaporator temperature.
- Medium Temp application is run in dual temp mode only.
- Not intended for frozen juice application.

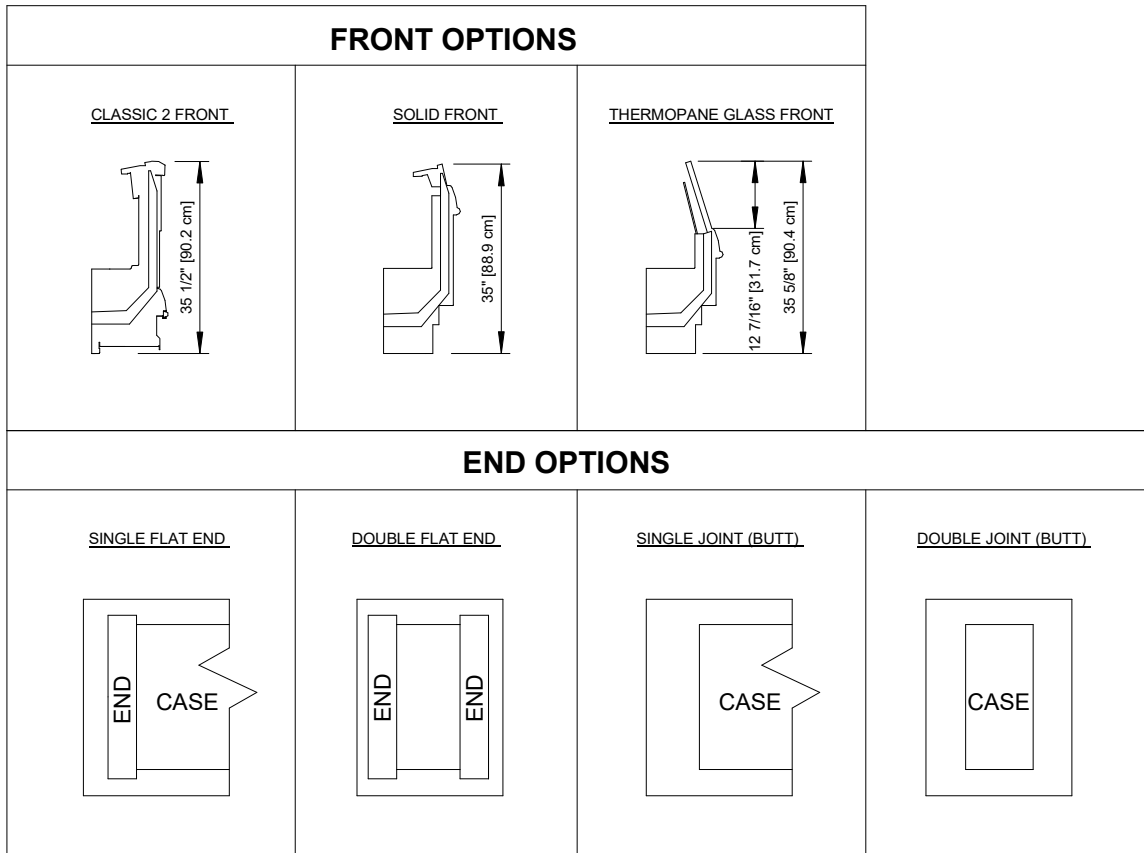


ALL MEASUREMENTS ARE TAKEN PER ASHRAE-72-2005 SPECIFICATIONS. HILLPHOENIX REFRIGERATED DISPLAY CASES FOR SALE IN THE UNITED STATES MEET OR EXCEED DEPARTMENT OF ENERGY 2017 REQUIREMENTS.

ONZ

| Rev. Date | Rev. # | Rev. Title |
|-----------|--------|--------------------|
| 5-13-21 | 4 | OPTION PAGE UPDATE |
| 4-9-20 | 3 | DATA UPDATE |

Hillphoenix
A DOVER COMPANY

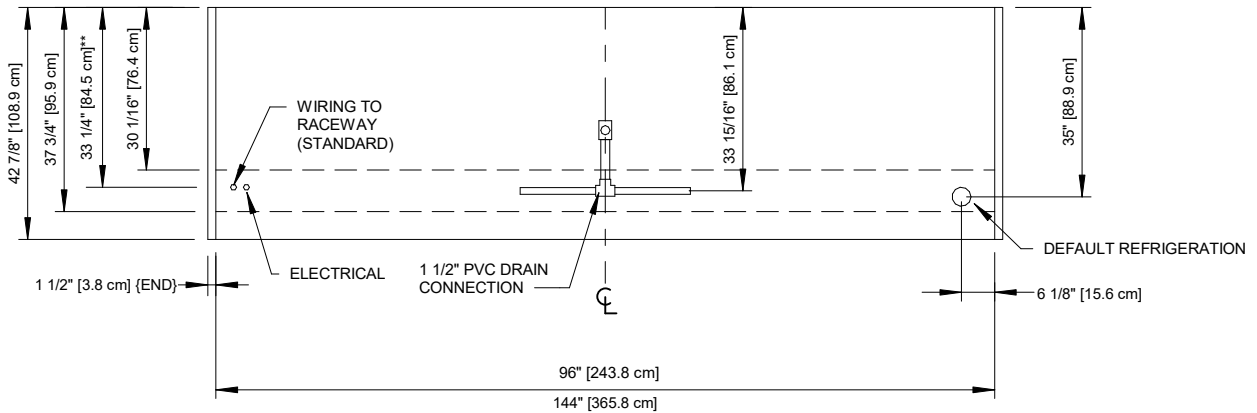
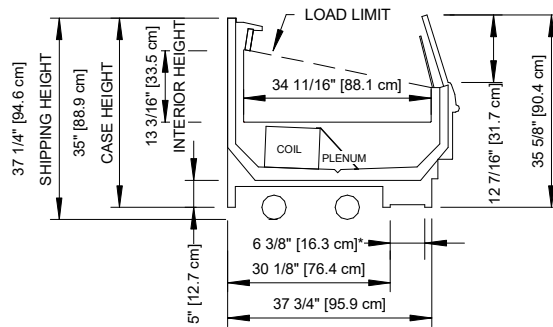


ALL MEASUREMENTS ARE TAKEN PER ASHRAE-72-2005 SPECIFICATIONS. HILLPHOENIX REFRIGERATED DISPLAY CASES FOR SALE IN THE UNITED STATES MEET OR EXCEED DEPARTMENT OF ENERGY 2017 REQUIREMENTS.

ONZ

| Rev. Date | Rev. # | Rev. Title |
|-----------|--------|--------------------|
| 5-13-21 | 4 | OPTION PAGE UPDATE |
| 4-9-20 | 3 | DATA UPDATE |





NOTES

- * :STUB-UP AREA
- ** :RECOMMENDED STUB-UP CENTERLINE FOR ELECTRICAL AND HUB DRAINS
- Front and rear sill heights vary with baseframe height.



ALL MEASUREMENTS ARE TAKEN PER ASHRAE-72-2005 SPECIFICATIONS. HILLPHOENIX REFRIGERATED DISPLAY CASES FOR SALE IN THE UNITED STATES MEET OR EXCEED DEPARTMENT OF ENERGY 2017 REQUIREMENTS.

ONZ

| Rev. Date | Rev. # | Rev. Title |
|-----------|--------|--------------------|
| 5-13-21 | 4 | OPTION PAGE UPDATE |
| 4-9-20 | 3 | DATA UPDATE |

Hillphoenix
A DOVER COMPANY