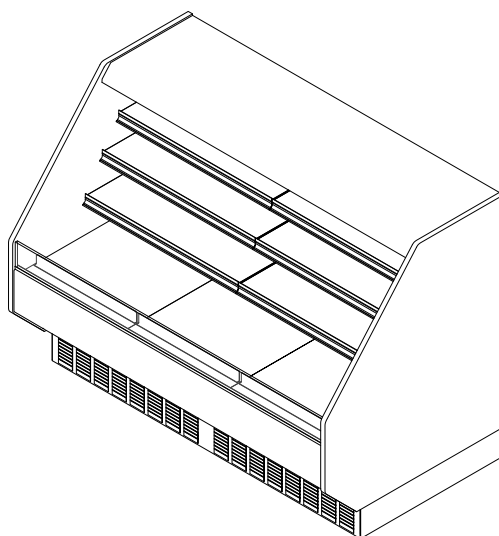


# PF-54-SC

Self-Service Open Multi-Deck Merchandiser  
4' & 6' (Bakery/Beverage/Cheese/Deli/Meat)

## GENERAL NOTES:

- "---" Indicates that the feature is not an option on this case model and/or the data is not yet available at this time.



| SHIPPING WEIGHT |        |
|-----------------|--------|
| Case            | Weight |
| PF-54-SC        | ---    |

2017  
**DOE**  
COMPLIANT



Intertek

Intertek

ENGINEERED FOR STORES WITH AMBIENT CONDITIONS NOT TO EXCEED 75° AND 55% RELATIVE HUMIDITY. DUE TO ENGINEERING IMPROVEMENTS SPECIFICATIONS MAY CHANGE WITHOUT NOTICE. ALL MEASUREMENTS ARE TAKEN PER ASHRAE-72 SPECIFICATIONS. HILLPHOENIX REFRIGERATED DISPLAY CASES FOR SALE IN THE UNITED STATES MEET OR EXCEED DEPARTMENT OF ENERGY 2017 REQUIREMENTS. NUMBERS ARE BASED ON STANDARD CASE SIZES. CONSULT ENGINEERING.

## PF-54-SC

| Rev. Date | Rev. # | Rev. Title    |
|-----------|--------|---------------|
| 03-15-22  | 2      | DATA UPDATE   |
| 03-06-21  | 1      | NEW STANDARDS |

Clearvoyant™  
LED SYSTEM

**Hillphoenix**  
a **DOVER** company

| SYSTEM REQUIREMENTS |         |       |            |                          |                                |
|---------------------|---------|-------|------------|--------------------------|--------------------------------|
| Case Length         | Volts   | Phase | Total Amps | Minimum Circuit Ampacity | Maximum Overcurrent Protection |
| 4'                  | 120     | 1     | 20.26      | 25.3                     | 45                             |
| 6'                  | 120/208 | 1     | 13.77      | 17.2                     | 30                             |

| ELECTRICAL DATA |               |                      |       |                      |       |             |       |                        |      |       |                |       |
|-----------------|---------------|----------------------|-------|----------------------|-------|-------------|-------|------------------------|------|-------|----------------|-------|
| Case Length     | Fans Per Case | High Efficiency Fans |       | Anti-Condensate Fans |       | Drain Pumps |       | Evaporator Pan Heaters |      |       | Auxiliary Fans |       |
|                 |               | 120 Volts            |       | 120 Volts            |       | 120 Volts   |       | Volts                  | Amps | Watts | 120 Volts      |       |
|                 |               | Amps                 | Watts | Amps                 | Watts | Amps        | Watts |                        |      |       | Amps           | Watts |
| 4'              | 1             | 0.30                 | 36.0  | 0.30                 | 36.0  | ---         | ---   | 120                    | 8.30 | 996.0 | ---            | ---   |
| 6'              | 2             | 0.60                 | 72.0  | 0.30                 | 36.0  | ---         | ---   | 208                    | 4.80 | 998.0 | 0.30           | 36.0  |

| LIGHTING DATA |                |              |  |       |                      |       |
|---------------|----------------|--------------|--|-------|----------------------|-------|
| Case Length   | Lights Per Row | Light Length | Clearvoyant 4 LED Lighting (Per Light Row) |       |                      |       |
|               |                |              | Standard Power (Cornice or Shelf)          |       | High Power (Cornice) |       |
|               |                |              | 120 Volts                                  |       | 120 Volts            |       |
|               |                |              | Amps                                       | Watts | Amps                 | Watts |
| 4'            | 1              | 4'           | 0.05                                       | 5.9   | 0.12                 | 14.9  |
| 6'            | 2              | 3'           | 0.08                                       | 9.4   | 0.20                 | 23.8  |

| GUIDELINES AND CONTROL SETTINGS |  |                                 |                    |                              |
|---------------------------------|--|---------------------------------|--------------------|------------------------------|
| 24hr Energy Usage (kWh/ft)      | Suction Temperature @ Case Outlet (°F) | Superheat Set Point @ Bulb (°F) | Discharge Air (°F) | Discharge Air Velocity (FPM) |
| ---                             | +20                                    | 8 - 10                          | 28                 | 250                          |

| CONDENSING UNIT DATA |       |       |     |            |            |         |                |       |                   |
|----------------------|-------|-------|-----|------------|------------|---------|----------------|-------|-------------------|
| Case Length          | Volts | Phase | HP  | RLA (Amps) | LRA (Amps) | Refrig. | Condenser Fans |       | Lbs. of Refriger. |
|                      |       |       |     |            |            |         | Amps           | Watts |                   |
| 4'                   | 120   | 1     | 1/2 | 9.25       | 54.50      | 404a    | 1.30           | 156.0 | 2.2               |
| 6'                   | 208   | 1     | 1   | 6.20       | 40.00      | 404a    | 0.85           | 177.0 | 4.4               |

**NOTES:**

- "---" Indicates that the feature is not an option on this case model and/or the data is not yet available at this time.
- Listed discharge air velocity represents the average velocity at the peak of defrost.
- LRA - Locked Rotor Amps
- RLA - Running Load Amps



ENGINEERED FOR STORES WITH AMBIENT CONDITIONS NOT TO EXCEED 75° AND 55% RELATIVE HUMIDITY. DUE TO ENGINEERING IMPROVEMENTS SPECIFICATIONS MAY CHANGE WITHOUT NOTICE. ALL MEASUREMENTS ARE TAKEN PER ASHRAE-72 SPECIFICATIONS. HILLPHOENIX REFRIGERATED DISPLAY CASES FOR SALE IN THE UNITED STATES MEET OR EXCEED DEPARTMENT OF ENERGY 2017 REQUIREMENTS. NUMBERS ARE BASED ON STANDARD CASE SIZES. CONSULT ENGINEERING.

**PF-54-SC**

| Rev. Date | Rev. # | Rev. Title    |
|-----------|--------|---------------|
| 03-15-22  | 2      | DATA UPDATE   |
| 03-06-21  | 1      | NEW STANDARDS |



# PF-54-SC

Self-Service Open Multi-Deck Merchandiser  
4' & 6' (Bakery/Beverage/Cheese/Deli/Meat)

| DEFROST CONTROLS |                    |                  |                       |                   |                       |                 |                       |
|------------------|--------------------|------------------|-----------------------|-------------------|-----------------------|-----------------|-----------------------|
| Defrosts Per Day | Run-Off Time (Min) | Electric Defrost |                       | Timed-Off Defrost |                       | Hot Gas Defrost |                       |
|                  |                    | Fail-Safe (Min)  | Termination Temp (°F) | Fail Safe (Min)   | Termination Temp (°F) | Fail-Safe (Min) | Termination Temp (°F) |
| 4                | 30                 | ---              | ---                   | ---               | ---                   | ---             | ---                   |

2017  
**DOE**  
COMPLIANT



Intertek

Intertek

ENGINEERED FOR STORES WITH AMBIENT CONDITIONS NOT TO EXCEED 75° AND 55% RELATIVE HUMIDITY. DUE TO ENGINEERING IMPROVEMENTS SPECIFICATIONS MAY CHANGE WITHOUT NOTICE. ALL MEASUREMENTS ARE TAKEN PER ASHRAE-72 SPECIFICATIONS. HILLPHOENIX REFRIGERATED DISPLAY CASES FOR SALE IN THE UNITED STATES MEET OR EXCEED DEPARTMENT OF ENERGY 2017 REQUIREMENTS. NUMBERS ARE BASED ON STANDARD CASE SIZES. CONSULT ENGINEERING.

## PF-54-SC

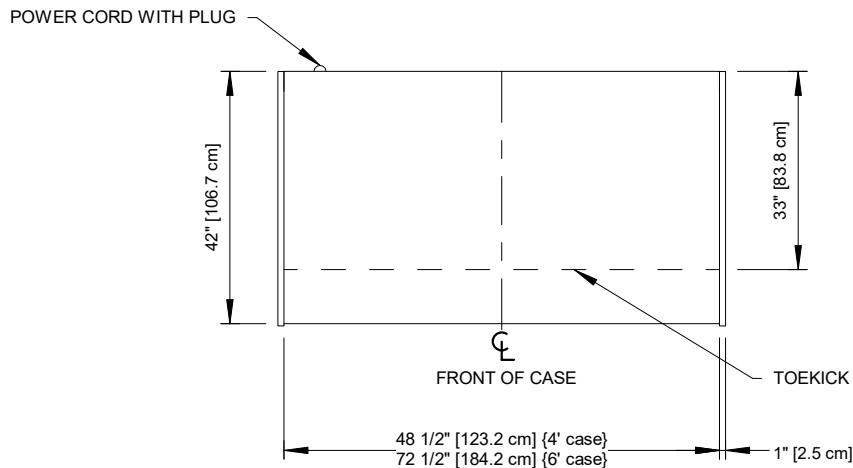
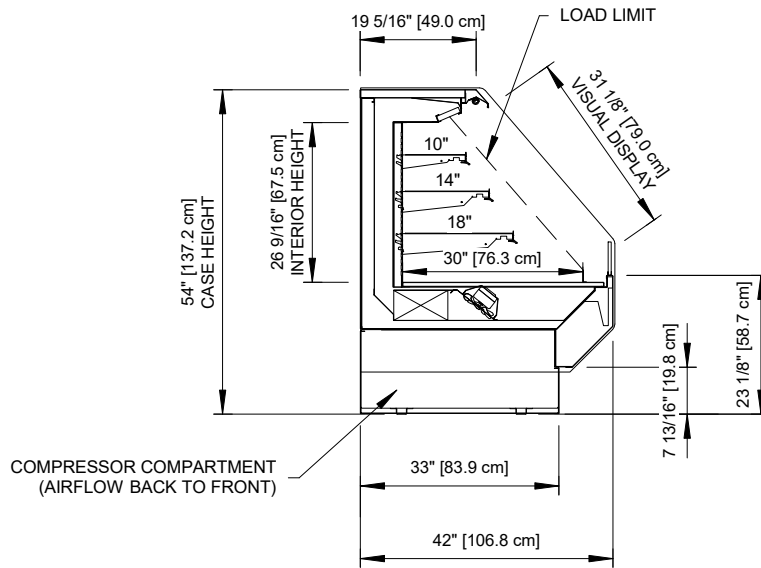
| Rev. Date | Rev. # | Rev. Title    |
|-----------|--------|---------------|
| 03-15-22  | 2      | DATA UPDATE   |
| 03-06-21  | 1      | NEW STANDARDS |

Clearvoyant™  
LED SYSTEM

**Hillphoenix**  
a **DOVER** company

# PF-54-SC

Self-Service Open Multi-Deck Merchandiser  
4' & 6' (Bakery/Beverage/Cheese/Deli/Meat)



2017  
DOE  
COMPLIANT



ENGINEERED FOR STORES WITH AMBIENT CONDITIONS NOT TO EXCEED 75° AND 55% RELATIVE HUMIDITY. DUE TO ENGINEERING IMPROVEMENTS SPECIFICATIONS MAY CHANGE WITHOUT NOTICE. ALL MEASUREMENTS ARE TAKEN PER ASHRAE-72 SPECIFICATIONS. HILLPHOENIX REFRIGERATED DISPLAY CASES FOR SALE IN THE UNITED STATES MEET OR EXCEED DEPARTMENT OF ENERGY 2017 REQUIREMENTS. NUMBERS ARE BASED ON STANDARD CASE SIZES. CONSULT ENGINEERING.

## PF-54-SC

| Rev. Date | Rev. # | Rev. Title    |
|-----------|--------|---------------|
| 03-15-22  | 2      | DATA UPDATE   |
| 03-06-21  | 1      | NEW STANDARDS |

Clearvoyant  
LED SYSTEM

**Hillphoenix**  
a DOVER company