

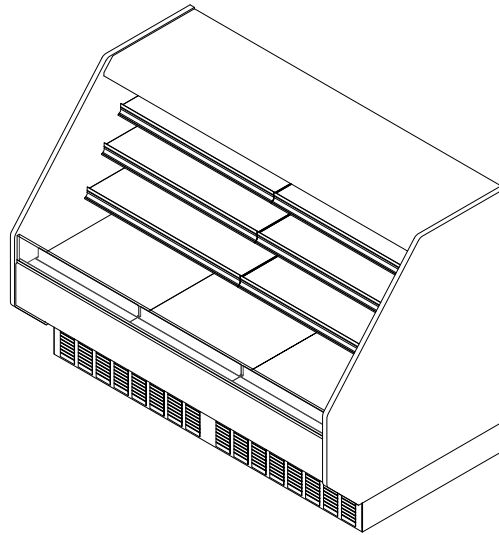
PF-54-SC

Self-Service Open Multi-Deck Merchandiser
4' & 6' (Bakery/Beverage/Cheese/Deli)



GENERAL NOTES:

- "---" Indicates that the feature is not an option on this case model and/or the data is not yet available at this time.



SHIPPING WEIGHT	
Case	Weight
PF-54-SC	---



PF-54-SC

Rev. Date	Rev. #	Rev. Title
03-15-22	2	DATA UPDATE
03-06-21	1	NEW STANDARDS



ALL MEASUREMENTS ARE TAKEN PER ASHRAE-72 SPECIFICATIONS. HILLPHOENIX REFRIGERATED DISPLAY CASES FOR SALE IN THE UNITED STATES MEET OR EXCEED DEPARTMENT OF ENERGY 2017 REQUIREMENTS.



SYSTEM REQUIREMENTS				
Case Length	Volts	Phase	Minimum Circuit Ampacity	Maximum Overcurrent Protection
4'	120	1	9.1	15.2
6'	120	1	15.9	22.0

SYSTEM REQUIREMENTS				
Case Length	Volts	Phase	Minimum Circuit Ampacity	Maximum Overcurrent Protection
4'	120/208	1	7.6	13.7
6'	120/208	1	8.9	15.0

ELECTRICAL DATA							
Case Length	Fans Per Case	High Efficiency Fans		Anti-Condensate Fans		Drain Pumps	
		120 Volts		120 Volts		120 Volts	
		Amps	Watts	Amps	Watts	Amps	Watts
4'	2	0.60	25	---	---	---	---
6'	2	0.60	25	---	---	---	---

LIGHTING DATA						
Case Length	Lights Per Row	Light Length	Clearvoyant 4 LED Lighting (Per Light Row)			
			Standard Power (Cornice or Shelf)		High Power (Cornice)	
			120 Volts		120 Volts	
			Amps	Watts	Amps	Watts
4'	1	4'	0.05	5.9	0.12	14.9
6'	2	3'	0.04	4.7	0.10	11.9

GUIDELINES AND CONTROL SETTINGS			
Case Length	24hr Energy Usage (kWh/ft)	Discharge Air (°F)	Discharge Air Velocity (FPM)
4'	14.63	28 - 30	168
6'	21.5	25 - 30	143

NOTES:

- "—" Indicates that the feature is not an option on this case model and/or the data is not yet available at this time.
- Listed discharge air velocity represents the average velocity at the peak of defrost.
- LRA - Locked Rotor Amps
- RLA - Running Load Amps



PF-54-SC

Rev. Date	Rev. #	Rev. Title
03-15-22	2	DATA UPDATE
03-06-21	1	NEW STANDARDS



ALL MEASUREMENTS ARE TAKEN PER ASHRAE-72 SPECIFICATIONS. HILLPHOENIX REFRIGERATED DISPLAY CASES FOR SALE IN THE UNITED STATES MEET OR EXCEED DEPARTMENT OF ENERGY 2017 REQUIREMENTS.

PF-54-SC

Self-Service Open Multi-Deck Merchandiser
4' & 6' (Bakery/Beverage/Cheese/Deli)



CONDENSING UNIT DATA										
Case Length	Qty	Volts	Phase	HP	RLA (Amps)	LRA (Amps)	Refrig.	Grams	Condenser Fans	
									Amps	Watts
4'	1	115	---	---	6.10	42.00	R290	132	0.53	30
6'	2	115	---	---	6.10	42.00	R290	132	1.05	30

DEFROST CONTROLS							
Defrosts Per Day	Run-Off Time (Min)	Electric Defrost		Timed-Off Defrost		Hot Gas Defrost	
		Fail-Safe (Min)	Termination Temp (°F)	Fail Safe (Min)	Termination Temp (°F)	Fail-Safe (Min)	Termination Temp (°F)
4	30	---	---	---	---	---	---



PF-54-SC

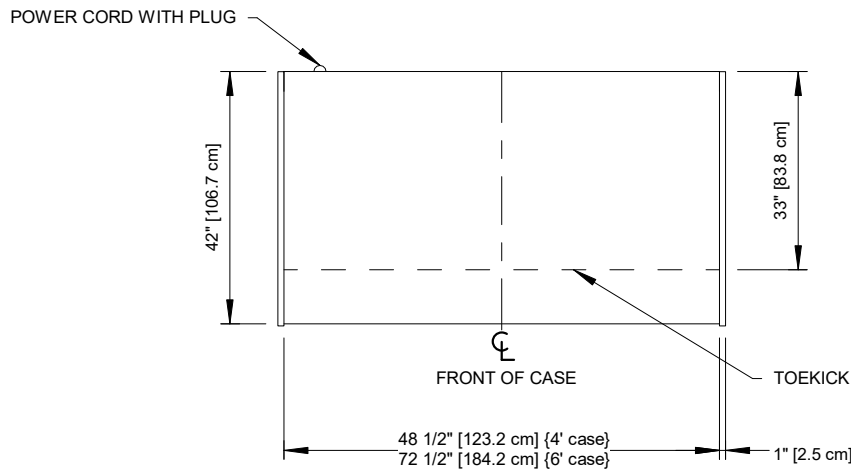
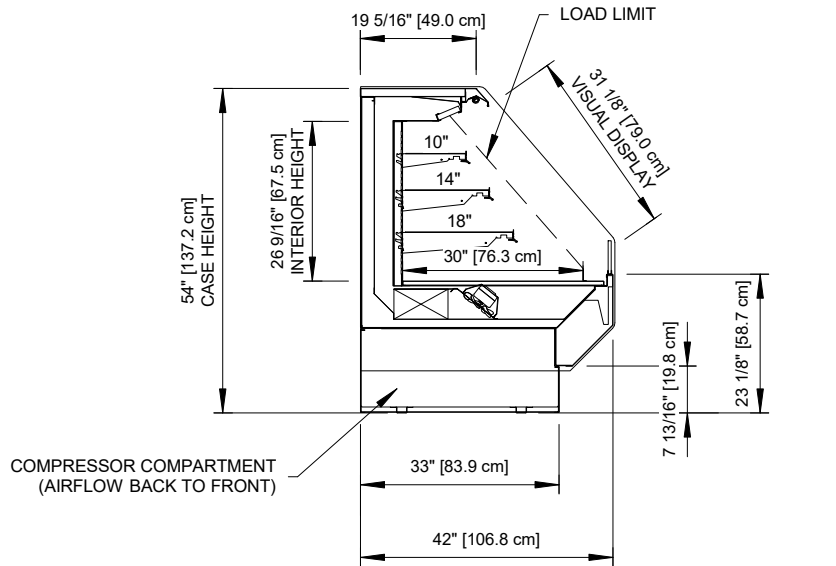
Rev. Date	Rev. #	Rev. Title
03-15-22	2	DATA UPDATE
03-06-21	1	NEW STANDARDS



ALL MEASUREMENTS ARE TAKEN PER ASHRAE-72 SPECIFICATIONS. HILLPHOENIX REFRIGERATED DISPLAY CASES FOR SALE IN THE UNITED STATES MEET OR EXCEED DEPARTMENT OF ENERGY 2017 REQUIREMENTS.

PF-54-SC

Self-Service Open Multi-Deck Merchandiser
4' & 6' (Bakery/Beverage/Cheese/Deli)



PF-54-SC

Rev. Date	Rev. #	Rev. Title
03-15-22	2	DATA UPDATE
03-06-21	1	NEW STANDARDS



a DOVER company

ALL MEASUREMENTS ARE TAKEN PER ASHRAE-72 SPECIFICATIONS. HILLPHOENIX REFRIGERATED DISPLAY CASES FOR SALE IN THE UNITED STATES MEET OR EXCEED DEPARTMENT OF ENERGY 2017 REQUIREMENTS.