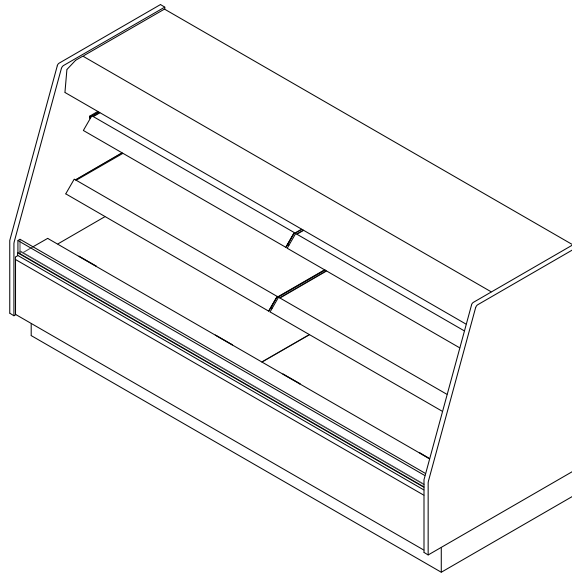


**GENERAL NOTES:**

- "---" Indicates that the feature is not an option on this case model and/or the data is not yet available at this time.



SHIPPING WEIGHT	
Case	Weight
PF-H	---



ENGINEERED FOR STORES WITH AMBIENT CONDITIONS NOT TO EXCEED 75° AND 55% RELATIVE HUMIDITY. DUE TO ENGINEERING IMPROVEMENTS SPECIFICATIONS MAY CHANGE WITHOUT NOTICE. ALL MEASUREMENTS ARE TAKEN PER ASHRAE-72 SPECIFICATIONS. NUMBERS ARE BASED ON STANDARD CASE SIZES. CONSULT ENGINEERING.

**PF-H**

Rev. Date	Rev. #	Rev. Title
07-24-23	7	DATE UPDATE
03-15-22	6	DATE UPDATE

SELF-SERVICE DATA								
Case Length	Heaters		Shelves					
	Bottom Heaters		First Top Shelf		Second Top Shelf		Third Top Shelf	
	Qty	Watts (Each)	Qty	Watts (each)	Qty	Watts (each)	Qty	Watts (each)
4'	1	1153	1	700	1	815	1	925
6'	2	846	2	515	2	600	2	680
8'	2	1153	2	700	2	815	2	925

SELF-SERVICE DATA (CONTINUED)						
Case Length	(51") Total Amps (208-3-60)			(54") Total Amps (208-3-60)		
	L1	L2	L3	L1	L2	L3
4'	8.38	6.80	9.51	10.04	12.83	11.78
6'	13.90	10.01	12.38	14.75	18.86	17.34
8'	18.92	13.61	16.86	20.08	25.65	23.56

ELECTRICAL DATA			
Case Length	Fans Per Case	Control Fans	
		208 Volts	
		Amps	Watts
4'	1	0.06	14.0
6'	1	0.06	14.0
8'	2	0.12	28.0

LIGHTING DATA				
Case Length	Lights Per Row	Light Length	Clearvoyant 4 LED Lighting (Per Light Row)	
			Standard Power (Cornice or Shelf)	
			120 Volts	
Amps	Watts			
4'	1	4'	0.05	5.9
6'	2	3'	0.08	9.4
8'	2	4'	0.10	11.8

**NOTES:**

- "---" Indicates that the feature is not an option on this case model and/or the data is not yet available at this time.

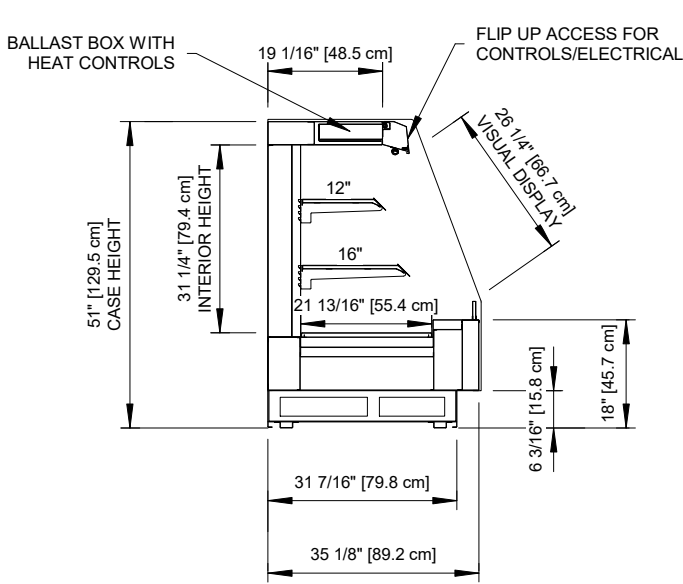


ENGINEERED FOR STORES WITH AMBIENT CONDITIONS NOT TO EXCEED 75° AND 55% RELATIVE HUMIDITY. DUE TO ENGINEERING IMPROVEMENTS SPECIFICATIONS MAY CHANGE WITHOUT NOTICE. ALL MEASUREMENTS ARE TAKEN PER ASHRAE-72 SPECIFICATIONS. NUMBERS ARE BASED ON STANDARD CASE SIZES. CONSULT ENGINEERING.

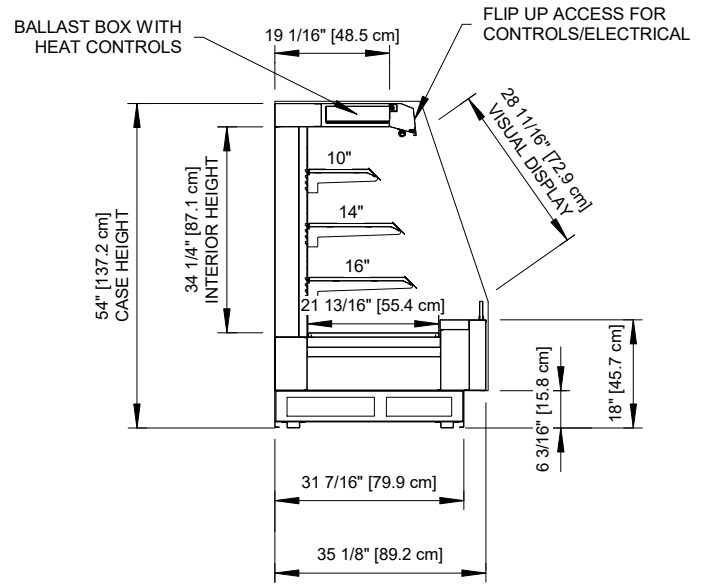
**PF-H**

Rev. Date	Rev. #	Rev. Title
07-24-23	7	DATE UPDATE
03-15-22	6	DATE UPDATE

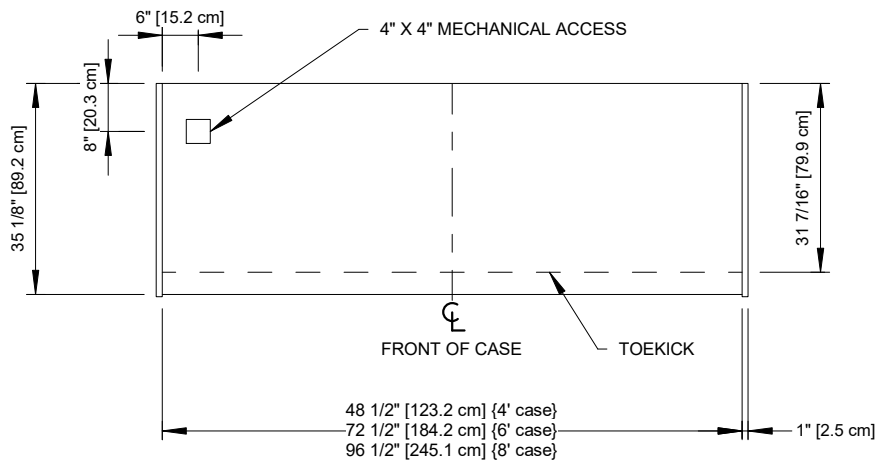




**51" PROFILE**



**54" PROFILE (OPTIONAL)**



ENGINEERED FOR STORES WITH AMBIENT CONDITIONS NOT TO EXCEED 75° AND 55% RELATIVE HUMIDITY. DUE TO ENGINEERING IMPROVEMENTS SPECIFICATIONS MAY CHANGE WITHOUT NOTICE. ALL MEASUREMENTS ARE TAKEN PER ASHRAE-72 SPECIFICATIONS. NUMBERS ARE BASED ON STANDARD CASE SIZES. CONSULT ENGINEERING.

**PF-H**

Rev. Date	Rev. #	Rev. Title
07-24-23	7	DATE UPDATE
03-15-22	6	DATE UPDATE

