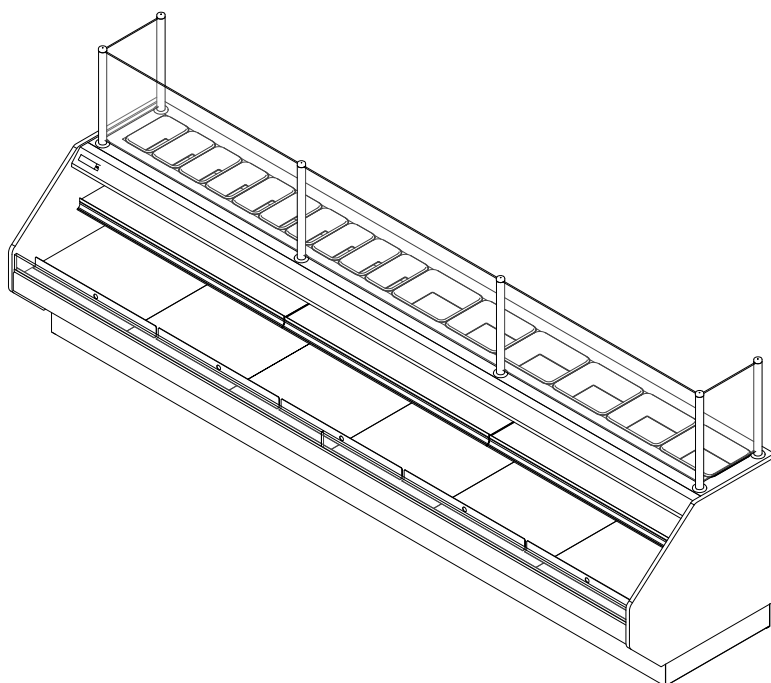


PT-34.5-35-R

Self-Service Open Multi-Deck Merchandiser w/ Food Prep
4', 6', 8', 10' & 12' (Bakery/Deli/Sushi)

GENERAL NOTES:

- "----" Indicates that the feature is not an option on this case model and/or the data is not yet available at this time.
- DRS/RRS - Dry Rear Storage/Refrigerated Rear Storage. (optional)



SHIPPING WEIGHT	
Case	Weight
PT-34.5-35-R	---

2017
DOE
COMPLIANT



ENGINEERED FOR STORES WITH AMBIENT CONDITIONS NOT TO EXCEED 75° AND 55% RELATIVE HUMIDITY. DUE TO ENGINEERING IMPROVEMENTS SPECIFICATIONS MAY CHANGE WITHOUT NOTICE. ALL MEASUREMENTS ARE TAKEN PER ASHRAE-72-2005 SPECIFICATIONS. HILLPHOENIX REFRIGERATED DISPLAY CASES FOR SALE IN THE UNITED STATES MEET OR EXCEED DEPARTMENT OF ENERGY 2017 REQUIREMENTS. NUMBERS ARE BASED ON STANDARD CASE SIZES. CONSULT ENGINEERING.

PT-34.5-35-R

Rev. Date	Rev. #	Rev. Title
08-26-20	3	NOTES UPDATE
05-14-20	2	DATA UPDATE

Clearvoyant™
LED SYSTEM

Hillphoenix
A DOVER COMPANY

ELECTRICAL DATA

ELECTRICAL DATA												
Case Length	Fans Per Case	High Efficiency Fans		Anti-Condensate Heaters		Drain Heaters		Optional Defrost Heaters		RRS		
		120 Volts		120 Volts		120 Volts		208 Volts		Fans Per Case	Unit Cooler Fans	
											120 Volts	
		Amps	Watts	Amps	Watts	Amps	Watts	Amps	Watts		Amps	Watts
4'	1	0.30	36.0	0.30	36.0	---	---	---	---	1	0.80	96.0
6'	2	0.60	72.0	0.30	36.0	---	---	---	---	1	0.80	96.0
8'	3	0.90	108.0	0.60	72.0	---	---	---	---	2	1.60	192.0
10'	4	1.20	144.0	0.60	72.0	---	---	---	---	2	1.60	192.0
12'	4	1.20	144.0	0.70	84.0	---	---	---	---	2	1.60	192.0

LIGHTING DATA

Case Length	Lights Per Row	Light Length	Clearvoyant 4 LED Lighting (Per Light Row)			
			Standard Power (Cornice or Shelf)		High Power (Cornice)	
			120 Volts		120 Volts	
			Amps	Watts	Amps	Watts
4'	1	4'	0.05	5.9	0.12	14.9
6'	2	3'	0.08	9.4	0.20	23.8
8'	2	4'	0.10	11.8	0.24	29.8
10'	2	5'	0.12	15.0	0.30	37.0
12'	3	4'	0.15	17.7	0.36	44.7

GUIDELINES AND CONTROL SETTINGS (DX)

	BTUH/ft		Superheat Set Point @ Bulb (°F)	Evaporator (°F)	Discharge Air (°F)	Discharge Air Velocity (FPM)
	Conventional	Parallel				
DX	599	535	10 - 13	24	32	135 - 150
RRS	153	146	6 - 9	24	31	---

NOTES:

- "----" Indicates that the feature is not an option on this case model and/or the data is not yet available at this time.
- RRS - Rear Refrigerated Storage
- Listed BTUH indicates unlighted shelves. Add the following for lighted shelves:
 - 4' Shelf LED: 36 BTUH
 - 4' Canopy LED: 72 BTUH
 - 3' Shelf LED: 27 BTUH
 - 3' Hi-Output LED: 54 BTUH
- Listed discharge air velocity represents the average velocity at the peak of defrost.
- * Time-off duration for defrost with no termination control.



ENGINEERED FOR STORES WITH AMBIENT CONDITIONS NOT TO EXCEED 75° AND 55% RELATIVE HUMIDITY. DUE TO ENGINEERING IMPROVEMENTS SPECIFICATIONS MAY CHANGE WITHOUT NOTICE. ALL MEASUREMENTS ARE TAKEN PER ASHRAE-72-2005 SPECIFICATIONS. HILLPHOENIX REFRIGERATED DISPLAY CASES FOR SALE IN THE UNITED STATES MEET OR EXCEED DEPARTMENT OF ENERGY 2017 REQUIREMENTS. NUMBERS ARE BASED ON STANDARD CASE SIZES. CONSULT ENGINEERING.

PT-34.5-35-R

Rev. Date	Rev. #	Rev. Title
08-26-20	3	NOTES UPDATE
05-14-20	2	DATA UPDATE



A DOVER COMPANY

DEFROST CONTROLS							
Defrosts Per Day	Run-Off Time (Min)	Electric Defrost		Timed-Off Defrost		Hot Gas Defrost	
		Fail-Safe (Min)	Termination Temp (°F)	Fail-Safe (Min)	Termination Temp (°F)	Fail-Safe (Min)	Termination Temp (°F)
6	0	---	---	30/*25	42	---	---



ENGINEERED FOR STORES WITH AMBIENT CONDITIONS NOT TO EXCEED 75° AND 55% RELATIVE HUMIDITY. DUE TO ENGINEERING IMPROVEMENTS SPECIFICATIONS MAY CHANGE WITHOUT NOTICE. ALL MEASUREMENTS ARE TAKEN PER ASHRAE-72-2005 SPECIFICATIONS. HILLPHOENIX REFRIGERATED DISPLAY CASES FOR SALE IN THE UNITED STATES MEET OR EXCEED DEPARTMENT OF ENERGY 2017 REQUIREMENTS. NUMBERS ARE BASED ON STANDARD CASE SIZES. CONSULT ENGINEERING.

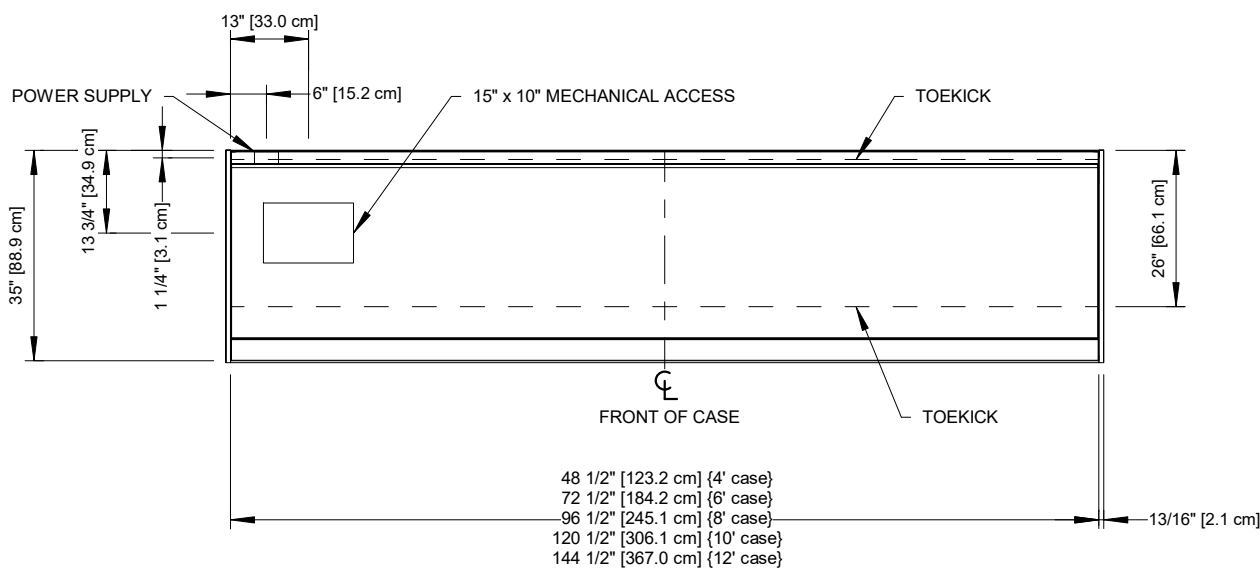
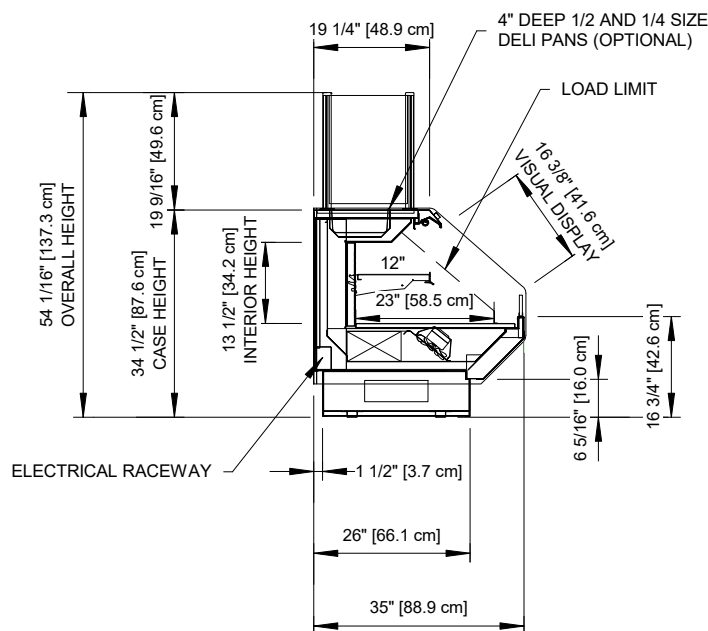
PT-34.5-35-R

Rev. Date	Rev. #	Rev. Title
08-26-20	3	NOTES UPDATE
05-14-20	2	DATA UPDATE



PT-34.5-35-R

Self-Service Open Multi-Deck Merchandiser w/ Food Prep
4', 6', 8', 10' & 12' (Bakery/Deli/Sushi)



ENGINEERED FOR STORES WITH AMBIENT CONDITIONS NOT TO EXCEED 75° AND 55% RELATIVE HUMIDITY. DUE TO ENGINEERING IMPROVEMENTS SPECIFICATIONS MAY CHANGE WITHOUT NOTICE. ALL MEASUREMENTS ARE TAKEN PER ASHRAE-72-2005 SPECIFICATIONS. HILLPHOENIX REFRIGERATED DISPLAY CASES FOR SALE IN THE UNITED STATES MEET OR EXCEED DEPARTMENT OF ENERGY 2017 REQUIREMENTS. NUMBERS ARE BASED ON STANDARD CASE SIZES. CONSULT ENGINEERING.

PT-34.5-35-R

Rev. Date	Rev. #	Rev. Title
08-26-20	3	NOTES UPDATE
05-14-20	2	DATA UPDATE

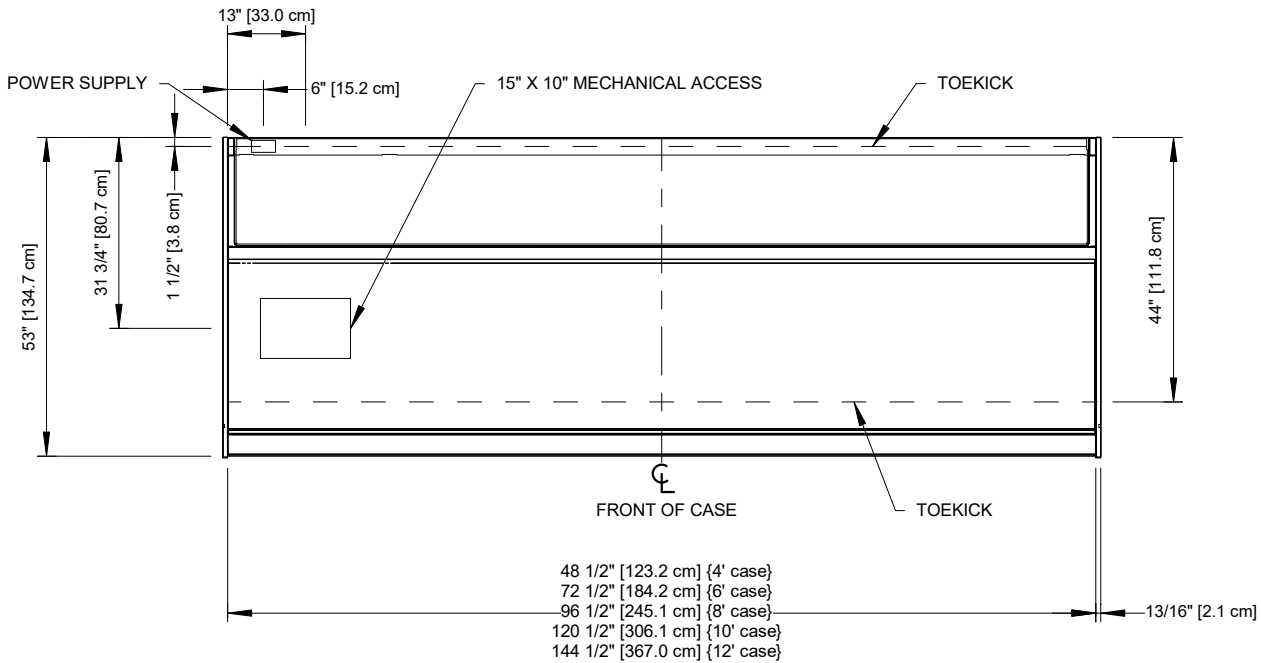
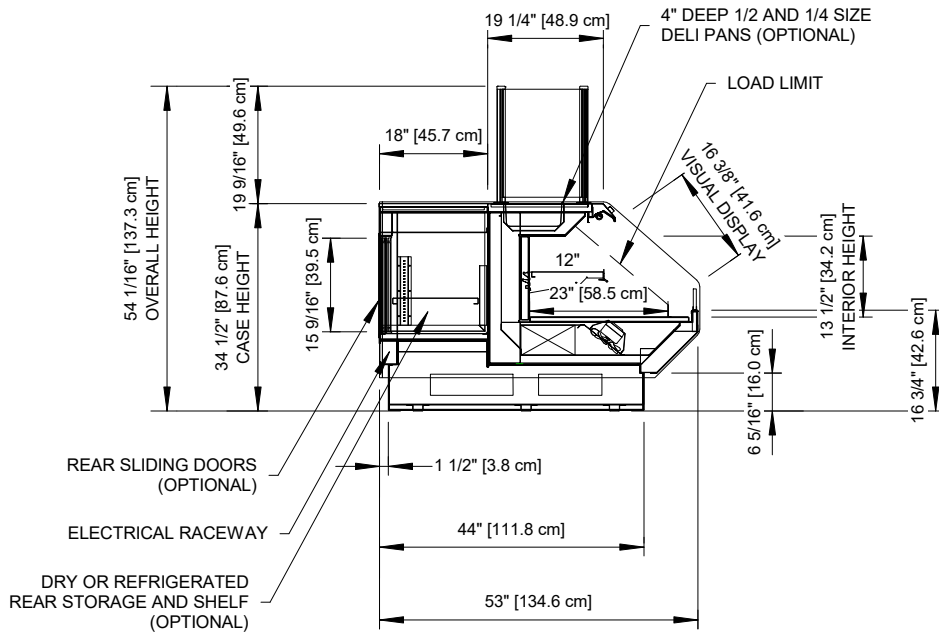
Clearvoyant™
LED SYSTEM

Hillphoenix

A DOVER COMPANY

PT-34.5-35-R

Self-Service Open Multi-Deck Merchandiser w/ Food Prep
4', 6', 8', 10' & 12' (Bakery/Deli/Sushi)



NOTES:

- Shown with optional rear storage.

2017
DOE
COMPLIANT



ENGINEERED FOR STORES WITH AMBIENT CONDITIONS NOT TO EXCEED 75° AND 55% RELATIVE HUMIDITY. DUE TO ENGINEERING IMPROVEMENTS SPECIFICATIONS MAY CHANGE WITHOUT NOTICE. ALL MEASUREMENTS ARE TAKEN PER ASHRAE-72-2005 SPECIFICATIONS. HILLPHOENIX REFRIGERATED DISPLAY CASES FOR SALE IN THE UNITED STATES MEET OR EXCEED DEPARTMENT OF ENERGY 2017 REQUIREMENTS. NUMBERS ARE BASED ON STANDARD CASE SIZES. CONSULT ENGINEERING.

PT-34.5-35-R

Rev. Date	Rev. #	Rev. Title
08-26-20	3	NOTES UPDATE
05-14-20	2	DATA UPDATE

Clearvoyant™
LED SYSTEM

Hillphoenix

A DOVER COMPANY