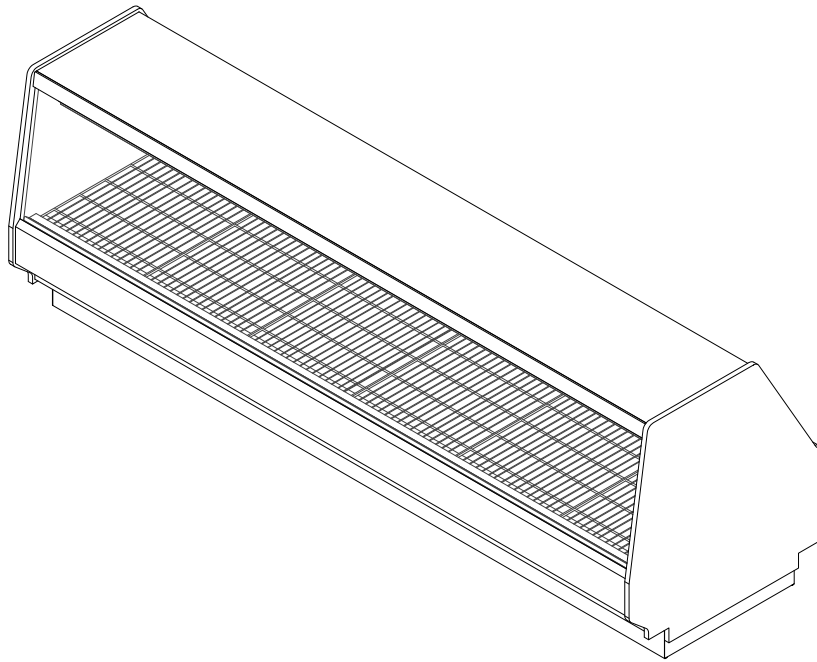


SGMO-RG

Service Single-Deck Merchandiser w/ Flat Fixed Glass
4', 6', 8', 10' & 12' (Deli/Meat/Seafood)

GENERAL NOTES:

- "---" Indicates that the feature is not an option on this case model and/or the data is not yet available at this time.



| SHIPPING WEIGHT | |
|-----------------|--------|
| Case | Weight |
| SGMO-RG | --- |



SGMO-RG

| Rev. Date | Rev. # | Rev. Title |
|-----------|--------|---------------|
| 03-10-22 | 2 | DATA UPDATE |
| 10-26-20 | 1 | NEW STANDARDS |



ALL MEASUREMENTS ARE TAKEN PER ASHRAE-72 SPECIFICATIONS. HILLPHOENIX REFRIGERATED DISPLAY CASES FOR SALE IN THE UNITED STATES MEET OR EXCEED DEPARTMENT OF ENERGY 2017 REQUIREMENTS.

| ELECTRICAL DATA | | | | | | | | | | | |
|-----------------|---------------|----------------------|-------|----------------------|-------|---------------|-------|--------------------------|-------|-----------|-------|
| Case Length | Fans Per Case | High Efficiency Fans | | Anti-Condensate Fans | | Drain Heaters | | Optional Defrost Heaters | | | |
| | | 120 Volts | | 120 Volts | | 120 Volts | | 208 Volts | | 240 Volts | |
| | | Amps | Watts | Amps | Watts | Amps | Watts | Amps | Watts | Amps | Watts |
| 4' | --- | --- | --- | --- | --- | --- | --- | --- | --- | --- | --- |
| 6' | --- | --- | --- | --- | --- | --- | --- | --- | --- | --- | --- |
| 8' | --- | --- | --- | --- | --- | --- | --- | --- | --- | --- | --- |
| 10' | --- | --- | --- | --- | --- | --- | --- | --- | --- | --- | --- |
| 12' | --- | --- | --- | --- | --- | --- | --- | --- | --- | --- | --- |

| LIGHTING DATA | | | | | | |
|---------------|----------------|--------------|--|-------|----------------------|-------|
| Case Length | Lights Per Row | Light Length | Clearvoyant 4 LED Lighting (Per Light Row) | | | |
| | | | Standard Power (Cornice or Shelf) | | High Power (Cornice) | |
| | | | 120 Volts | | 120 Volts | |
| | | | Amps | Watts | Amps | Watts |
| 4' | 1 | 4' | 0.05 | 5.9 | 0.12 | 14.9 |
| 6' | 2 | 3' | 0.08 | 9.4 | 0.20 | 23.8 |
| 8' | 2 | 4' | 0.10 | 11.8 | 0.24 | 29.8 |
| 10' | 2 | 5' | 0.12 | 15.0 | 0.30 | 37.0 |
| 12' | 3 | 4' | 0.15 | 17.7 | 0.36 | 44.7 |

| GUIDELINES AND CONTROL SETTINGS (DX) {DIRECT EXPANSION HFC/CO2} | | | | | |
|---|----------|---------------------------------|-----------------|--------------------|------------------------------|
| BTUH/ft | | Superheat Set Point @ Bulb (°F) | Evaporator (°F) | Discharge Air (°F) | Discharge Air Velocity (FPM) |
| Conventional | Parallel | | | | |
| 168 | 150 | 6 - 8 | 22 | 28 | --- |

NOTES:

- "----" Indicates that the feature is not an option on this case model and/or the data is not yet available at this time.
- When serpentine is present, it will require an evaporator pressure regulator to be set at 32°F saturated suction temperature. Defrost of the serpentine will be dependant to the gravity coil of the case.
- Listed discharge air velocity represents the average velocity at the peak of defrost.
- Glycol supply of 20°F has a propylene glycol mixture of 35% concentration by weight.
- Glycol supply of 25°F has a propylene glycol mixture of 30% concentration by weight.
- Units equipped with RH systems require 2 defrosts per day with a fail-safe of 120 minutes.
- Listed data is based on the factory recommended default fresh meat temperature settings.
- Shelves are not recommended for fresh meat applications.
- Discharge air temperature values represent readings taken within the upper air channel immediately behind/upstream of the honeycomb.



SGMO-RG



ALL MEASUREMENTS ARE TAKEN PER ASHRAE-72 SPECIFICATIONS. HILLPHOENIX REFRIGERATED DISPLAY CASES FOR SALE IN THE UNITED STATES MEET OR EXCEED DEPARTMENT OF ENERGY 2017 REQUIREMENTS.

| Rev. Date | Rev. # | Rev. Title |
|-----------|--------|---------------|
| 03-10-22 | 2 | DATA UPDATE |
| 10-26-20 | 1 | NEW STANDARDS |

GUIDELINES AND CONTROL SETTINGS (GLYCOL) {DIRECT EXPANSION HFC/CO2}

| Case Length | BTUH/ft | Glycol Supply (°F) | | Glycol Pressure Drop (PSIG) | | Coil Volume (gal) |
|-------------|---------|--------------------|------|-----------------------------|------|-------------------|
| | | 20°F | 25°F | 20°F | 25°F | |
| 4' | --- | --- | --- | 1.5 | --- | 1.7 |
| 6' | --- | --- | --- | 3.5 | --- | 2.5 |
| 8' | --- | --- | --- | 5.0 | --- | 3.0 |
| 10' | --- | --- | --- | 6.3 | --- | 4.2 |
| 12' | --- | --- | --- | 7.5 | --- | 5.0 |

DEFROST CONTROLS {DIRECT EXPANSION HFC/CO2}

| | Defrosts Per Day | Run-Off Time (Min) | Electric Defrost | | Timed-Off Defrost | | Hot Gas Defrost | |
|--------|------------------|--------------------|------------------|-----------------------|-------------------|-----------------------|-----------------|-----------------------|
| | | | Fail-Safe (Min) | Termination Temp (°F) | Fail Safe (Min) | Termination Temp (°F) | Fail-Safe (Min) | Termination Temp (°F) |
| DX | 1 | --- | --- | --- | 90 | 50 | --- | --- |
| GLYCOL | 2 | --- | --- | --- | 90 | 50 | --- | --- |



SGMO-RG



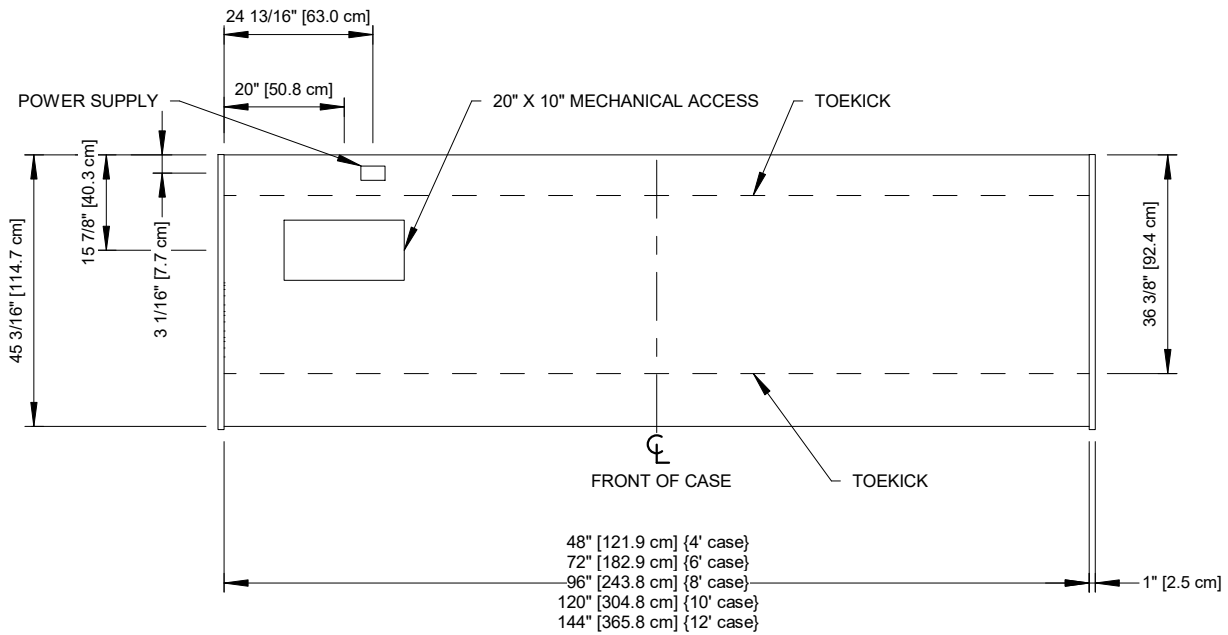
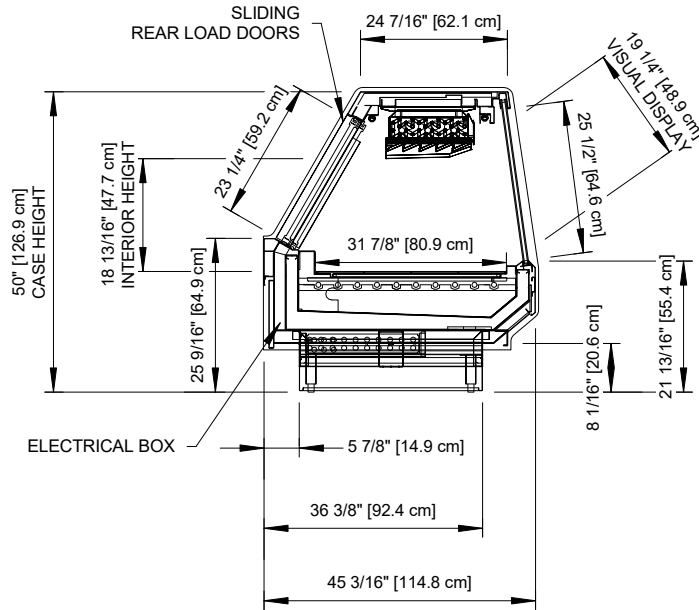
ALL MEASUREMENTS ARE TAKEN PER ASHRAE-72 SPECIFICATIONS. HILLPHOENIX REFRIGERATED DISPLAY CASES FOR SALE IN THE UNITED STATES MEET OR EXCEED DEPARTMENT OF ENERGY 2017 REQUIREMENTS.

| Rev. Date | Rev. # | Rev. Title |
|-----------|--------|---------------|
| 03-10-22 | 2 | DATA UPDATE |
| 10-26-20 | 1 | NEW STANDARDS |



SGMO-RG

Service Single-Deck Merchandiser w/ Flat Fixed Glass
4', 6', 8', 10' & 12' (Deli/Meat/Seafood)



SGMO-RG



ALL MEASUREMENTS ARE TAKEN PER ASHRAE-72 SPECIFICATIONS. HILLPHOENIX REFRIGERATED DISPLAY CASES FOR SALE IN THE UNITED STATES MEET OR EXCEED DEPARTMENT OF ENERGY 2017 REQUIREMENTS.

| Rev. Date | Rev. # | Rev. Title |
|-----------|--------|---------------|
| 03-10-22 | 2 | DATA UPDATE |
| 10-26-20 | 1 | NEW STANDARDS |